

## Topics

Contributions are invited both as **oral presentations** and **posters** to be displayed in the frame of the workshop. Any contributions should address one or more of the following topics for either heavy metals and/or persistent organic pollutants:

- **state-of-the-art of emission factors and measurements**
- **emission inventories on local, national and regional scale**
- **temporal and spatial resolution and variability**
- **trends in emissions and main influence factors**
- **uncertainties, validation and verification**

## Call for Papers

A **one page abstract** will be used by the scientific committee to evaluate the submissions and invite the submission of a full paper/poster. Please adhere to the basic format requirements given on the workshop website:

<http://espreme.ier.uni-stuttgart.de>

The **deadline** for abstract submissions is **August 1st, 2005**. Please send your abstract by email either as a Microsoft WORD **DOC** or **RTF** to

[stefan.reis@ier.uni-stuttgart.de](mailto:stefan.reis@ier.uni-stuttgart.de)

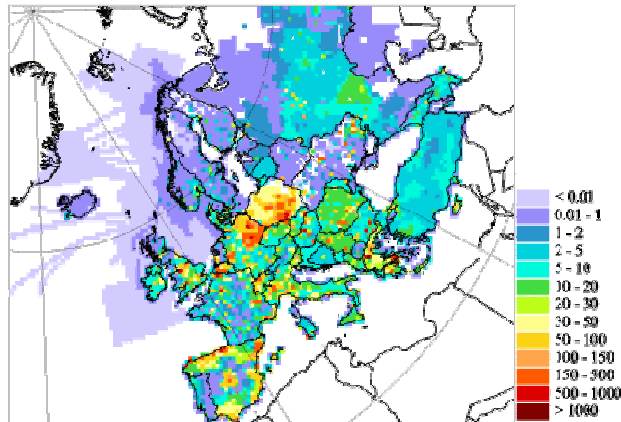
Authors will be notified two weeks after the abstract submission deadline and invited to prepare full papers/posters based on the evaluation results.



The **UNECE Task Force on Emission Inventories and Projection (TFEIP)** and the **EU 6FP Research Project ESPREME** jointly organise a workshop on **'Heavy Metals and POPs - Emissions, Inventories and Projections'**, back to back with the annual **UNECE TFEIP Task Force Meeting in Rovaniemi, Finland** **October 18 & 19, 2005**

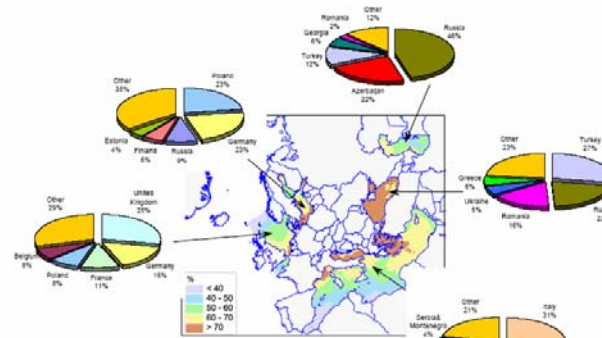
## Scope

High concentrations of heavy metals (HM) and Persistent Organic Pollutants (POPs) in the environment (air, water and soils) have been the cause of concern for many years, as both can have significant harmful effects on ecosystems and human health. Recent studies carried out for the EC have identified potential risks due to exposure of the European population to high ambient concentrations of HMs and POPs and underlined the need for comprehensive policy action. In this context, it is vital for policy makers to have a solid basis for decision making, starting with high quality emission inventories for in depth analyses of main contributing sources, options for emission control and finally quantified estimates of uncertainties.



Spatial distribution of mercury anthropogenic emissions in 2002, g/km<sup>2</sup>y (Source: EMEP MSC-East)

Call for Papers



**Contribution of anthropogenic input to total atmospheric depositions of lead in regional seas and contributions from main countries – sources**  
(Source: Heavy metals:transboundary pollution of the environment" Joint MSC-E & CCC Report)

This workshop shall serve as a forum for scientists, researchers and national inventory experts in the field of HM and POPs to discuss the state-of-the-art of methods to identify and quantify emissions of HMs and POPs to the environment, to enable national experts to critically review the status of current HM and POP emission inventories and to open the field for assessments of the future development of emissions of these substances.

It is planned to make the presentations and poster abstracts available online prior to the workshop on this website:

<http://espreme.ier.uni-stuttgart.de>

Call for Papers

## Workshop organisation:

Stefan Reis, Jozef Pacyna (*ESPREME*)  
Kristin Rypdal (*TFEIP Chair*)  
Kristina Saarinen, Finnish Environment Institute (*local organisation*)

## Scientific Committee:

Jozef Pacyna  
Rainer Friedrich  
Stefan Reis  
Kristin Rypdal  
Oleg Travnikov  
Heidi Fiedler  
Sergey Kakareka  
Janina Fudala  
Knut Breivik

## Deadlines:

**Aug 1st, 2005** Submission of abstracts  
**Aug 15th, 2005** Abstract evaluation results  
**Sep 15th, 2005** Electronic submission of full papers for online publication  
**Sep 30th, 2005** Workshop registration

Call for Papers