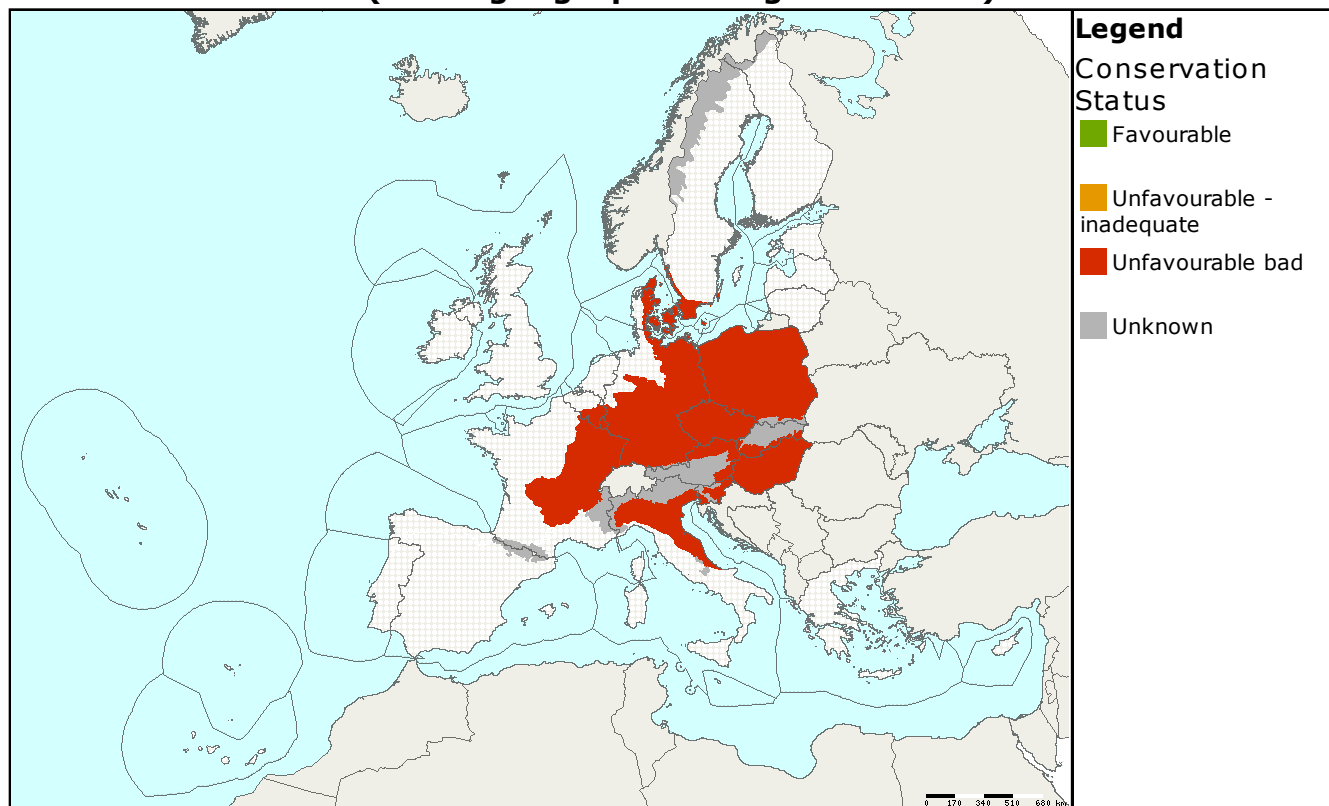


Habitat code: **6250**
 Habitat name: **Pannonic loess steppic grasslands**

Habitat group: **grasslands**
 Regions: **ALP CON PAN**

Assessments of conservation status at the European level (all biogeographical regions - EU25)



MS	Biogeographic Region	Conservation status assessment					Km ²	Trend in area
		Range	Area	Structure & function	Future prospects	Overall		
EU25	ALP						2.35	-
EU25	CON						0.2	X
EU25	PAN						205	-

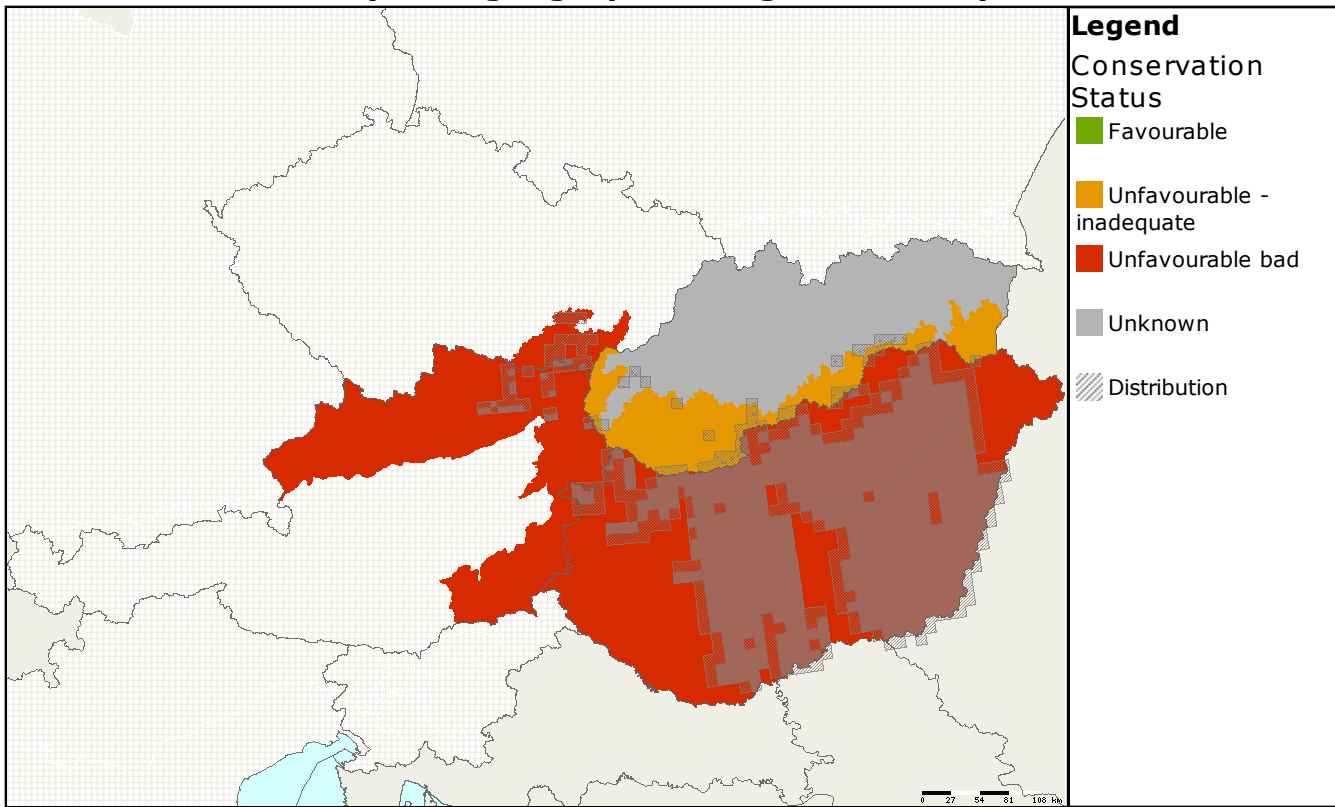
Grasslands on loess (windblown) deposits typical of the Pannonian basin, although found mostly in the Pannonic region (more than 95% of total area) these grasslands also occur in adjacent parts of the Alpine and Continental regions.

Assessed as 'unfavourable-bad' for all parameters and overall for the Pannonic and Continental regions. Only in Slovakia, where the assessment was 'unfavourable-inadequate', is the habitat not 'unfavourable-bad'. Threats and pressure include changes to agricultural practices and inappropriate land use.

Assessed as 'unknown but not favourable' for the Alpine region.

Better information required from Slovakia.

Assessments of conservation status as reported by Member states (all biogeographical regions - EU25)



MS	Biogeographic Region	Conservation status assessment					Km ²	Trend in area	Data quality
		Range	Area	Structure & function	Future prospects	Overall			
SK	ALP						2.35	-	2
AT	CON						0.2	X	2
CZ	PAN						1.1354	-	2
HU	PAN						200	-	1
SK	PAN						3.5	-	2

Data quality is based on an assessment by each Member State, 1 = good, 2 = medium, 3 = poor

This information is derived from the Member State national reports submitted to the European Commission under Article 17 of the Habitats Directive in 2007 and covering the period 2001-2006. More detailed information is available at <http://biodiversity.eionet.europa.eu/article17>