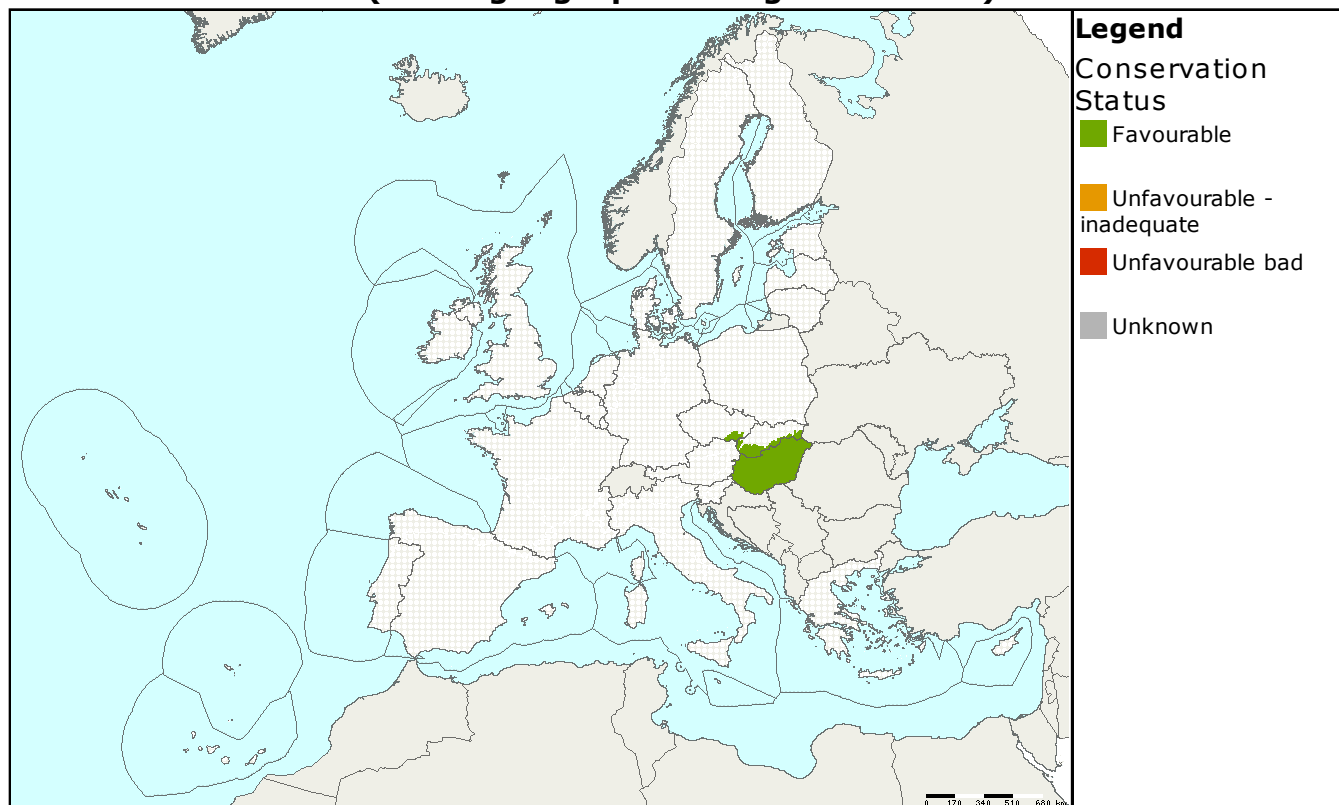


Species name: **Cirsium brachycephalum**  
 Annex: **II, IV**

Species group: **Plants**  
 Regions: **PAN**

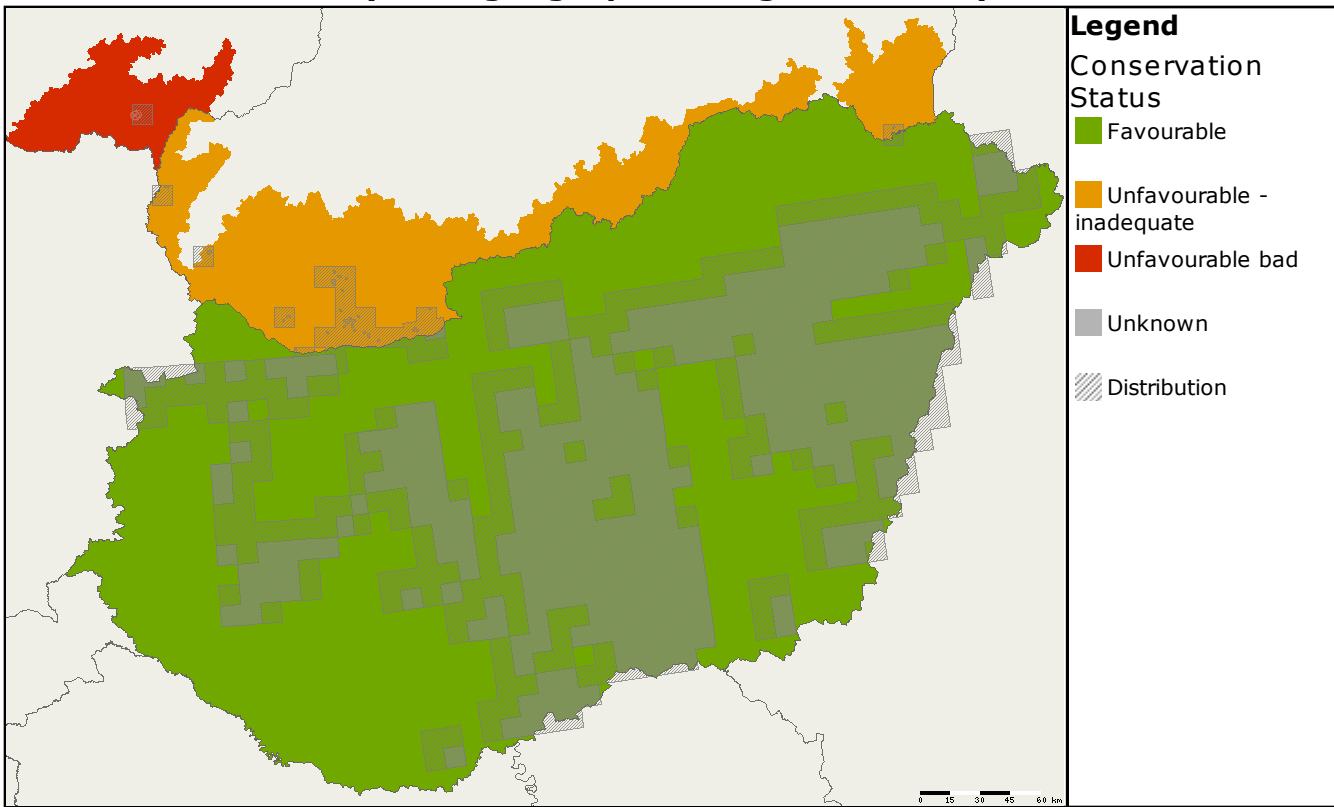
## Assessments of conservation status at the European level (all biogeographical regions - EU25)



MS	Region	Conservation status assessment					Population size & unit	Population Trend
		Range	Population	Habitat	Future prospects	Overall		
EU25	PAN						521 grids	

*Cirsium brachycephalum* is a perennial flowering plant occurring in Pannonian biogeographic region. Mostly in northern and western Hungary, plus adjacent parts of Slovakia and Czech Republic. It is assessed as 'favourable' overall due to Hungarian report (favourable in all parameters). It is reported as 'unfavourable-bad' in Czech Republic and 'unfavourable-inadequate' in Slovakia which are at the margins of the distribution and only host a very small proportion of the total EU population.

**Assessments of conservation status as reported by Member states  
(all biogeographical regions - EU25)**



MS	Region	Conservation status assessment					Size&unit	Population trend	Data quality
		Range	Population	Habitat	Future prospects	Overall			
CZ	PAN						1000 - 1000 indiv.	-	2
HU	PAN						30000000 - 100000000 indiv.	X	3
SK	PAN						35 - 35 loc.	=	1

Data quality is based on assessment by each Member State, 1 = good, 2 = medium, 3 = poor

This information is derived from the Member State national reports submitted to the European Commission under Article 17 of the Habitats Directive in 2007 and covering the period 2001-2006. More detailed information is available at <http://biodiversity.eionet.europa.eu/article17>