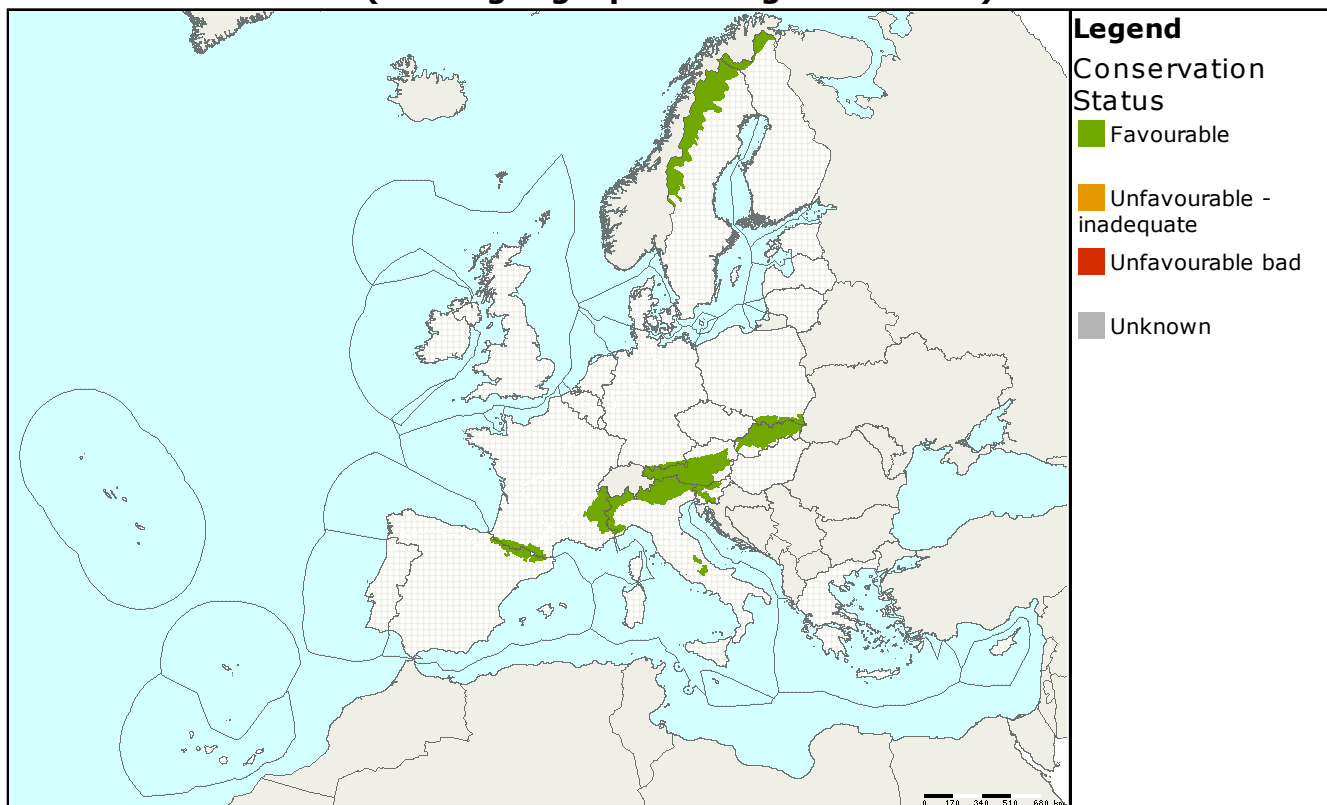


Species name: **Campanula morettiana**
Annex: **IV**

Species group: **Plants**
Regions: **ALP**

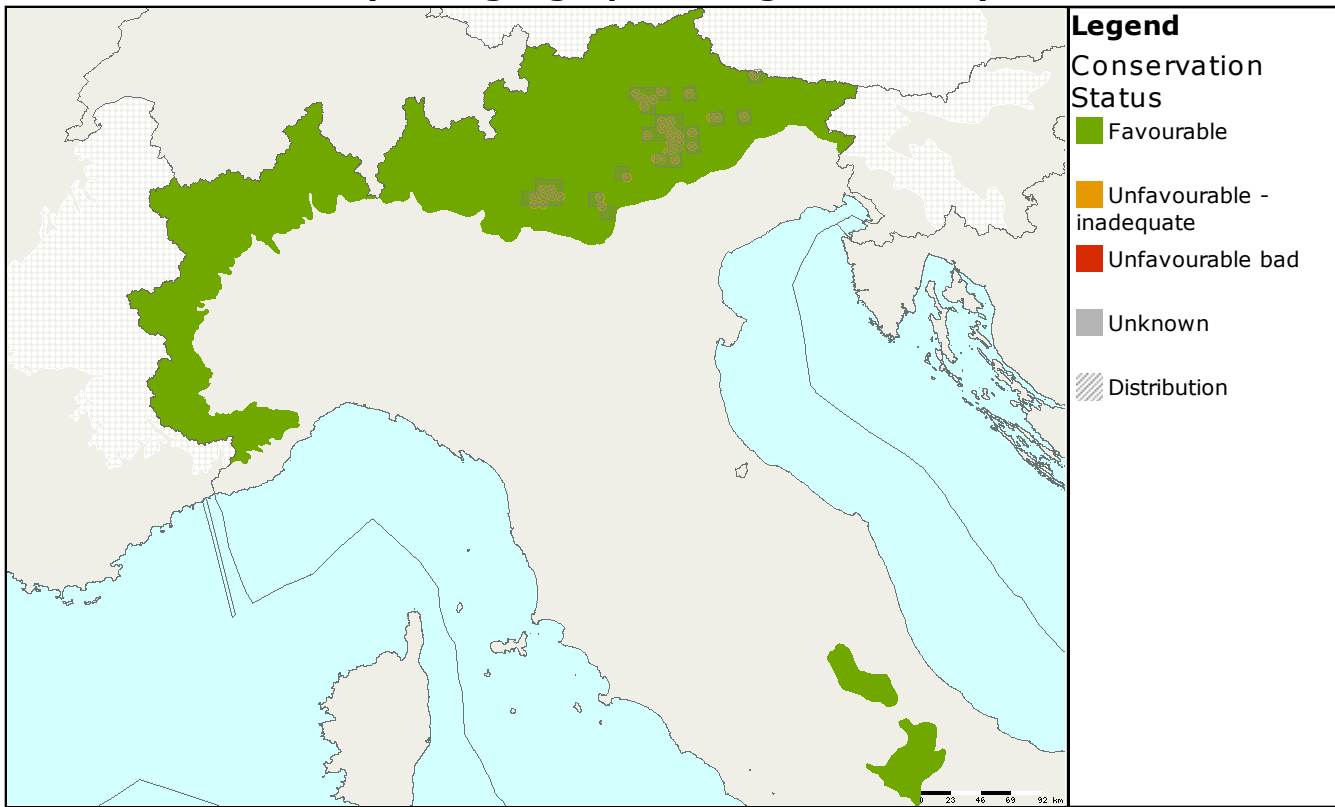
Assessments of conservation status at the European level (all biogeographical regions - EU25)



| MS | Region | Conservation status assessment | | | | | Population size & unit | Population Trend |
|------|--------|--------------------------------|------------|---------|------------------|---------|------------------------|------------------|
| | | Range | Population | Habitat | Future prospects | Overall | | |
| EU25 | ALP | | | | | | 49 loc. | = |

ALP: Reported from the South-Eastern Alps in Italy only. Although threatened by taking and habitat is unknown, the conclusion "favourable" is OK.

**Assessments of conservation status as reported by Member states
(all biogeographical regions - EU25)**



| MS | Region | Conservation status assessment | | | | | Size&unit | Population trend | Data quality |
|----|--------|--------------------------------|------------|---------|------------------|---------|--------------|------------------|--------------|
| | | Range | Population | Habitat | Future prospects | Overall | | | |
| IT | ALP | | | | | | 49 - 49 loc. | = | 2 |

Data quality is based on an assessment by each Member State, 1 = good, 2 = medium, 3 = poor

This information is derived from the Member State national reports submitted to the European Commission under Article 17 of the Habitats Directive in 2007 and covering the period 2001-2006. More detailed information is available at <http://biodiversity.eionet.europa.eu/article17>