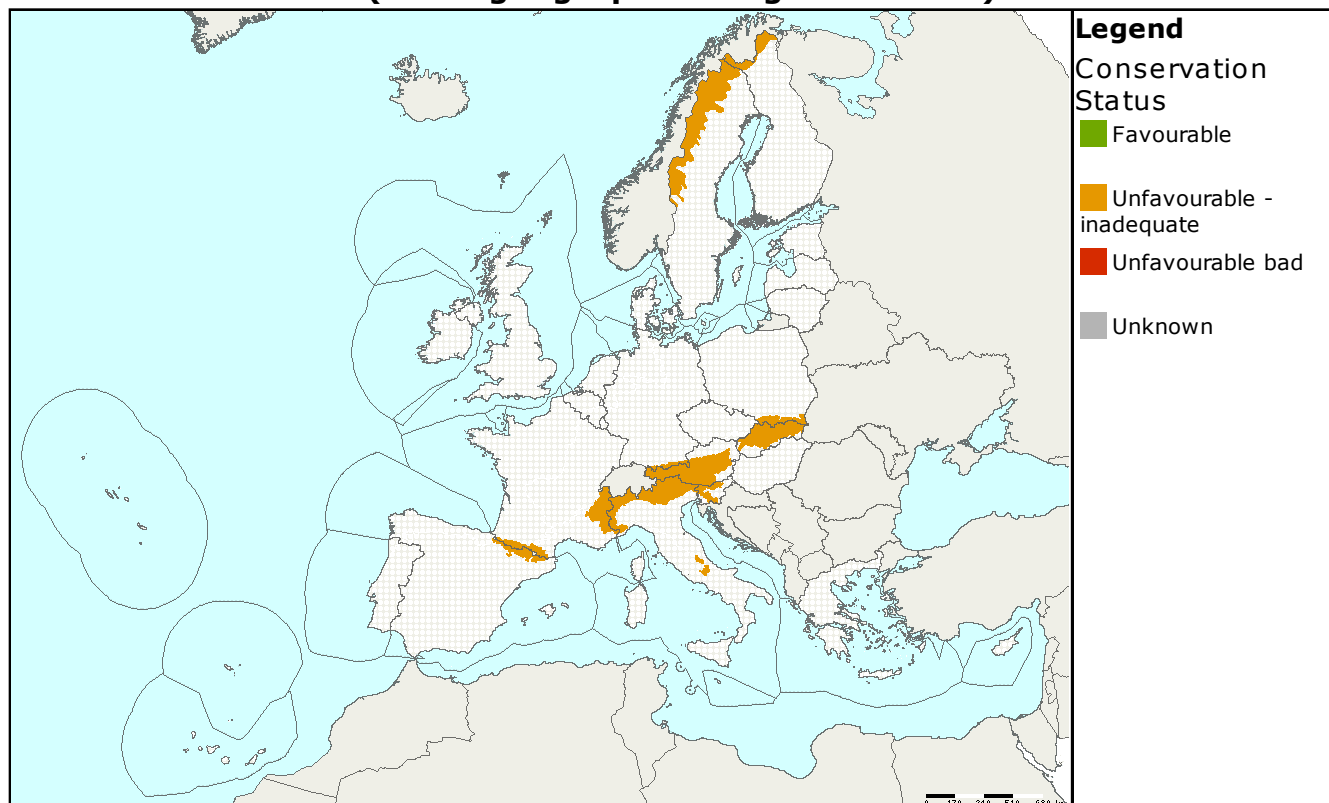


Species name: **Potentilla delphinensis**
Annex: **II, IV**

Species group: **Plants**
Regions: **ALP**

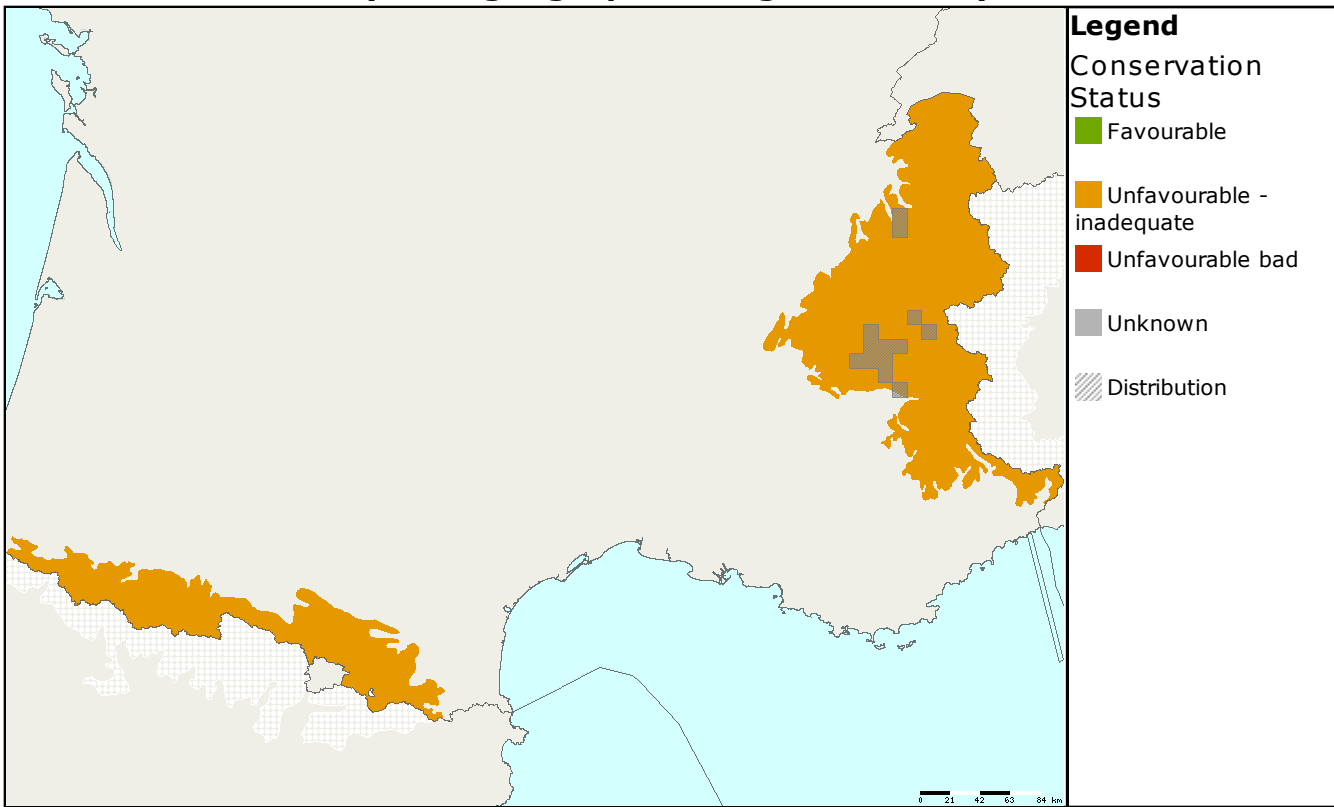
Assessments of conservation status at the European level (all biogeographical regions - EU25)



MS	Region	Conservation status assessment					Population size & unit	Population Trend
		Range	Population	Habitat	Future prospects	Overall		
EU25	ALP							=

ALP: Endemic to the French alps, in the past also recorded from adjacent parts of Italy but its presence here has never been confirmed Biology of the plant poorly known All parameters assessed as unfavourable-poor except for range which is favourable See <http://www.ecologie.gouv.fr/IMG/natura2000/habitats/pdf/tome6/1534.pdf>

**Assessments of conservation status as reported by Member states
(all biogeographical regions - EU25)**



MS	Region	Conservation status assessment					Size&unit	Population trend	Data quality
		Range	Population	Habitat	Future prospects	Overall			
FR	ALP						37 - 37 x	=	2

Data quality is based on an assessment by each Member State, 1 = good, 2 = medium, 3 = poor

This information is derived from the Member State national reports submitted to the European Commission under Article 17 of the Habitats Directive in 2007 and covering the period 2001-2006. More detailed information is available at <http://biodiversity.eionet.europa.eu/article17>