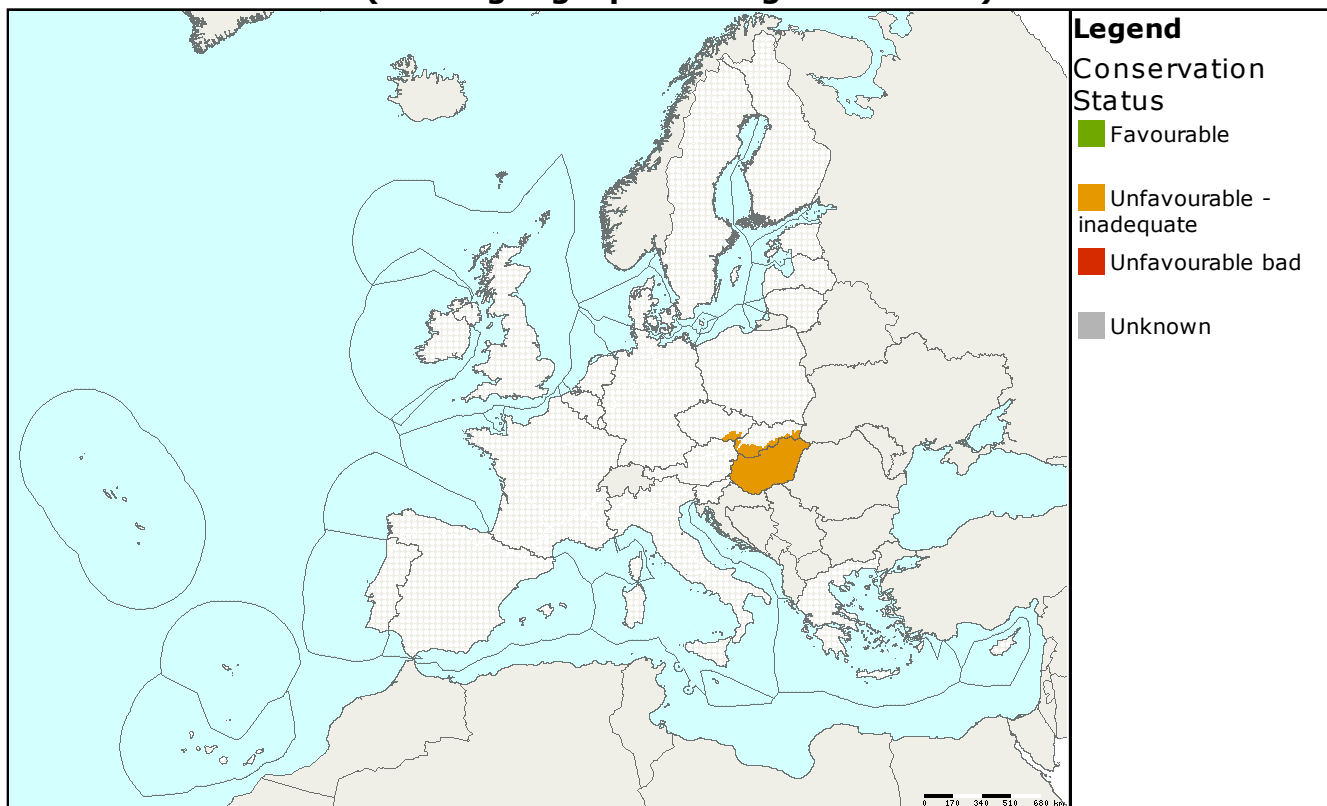


Species name: **Dianthus plumarius ssp. regis-stephani**  
 Annex: **II, IV**

Species group: **Plants**  
 Regions: **PAN**

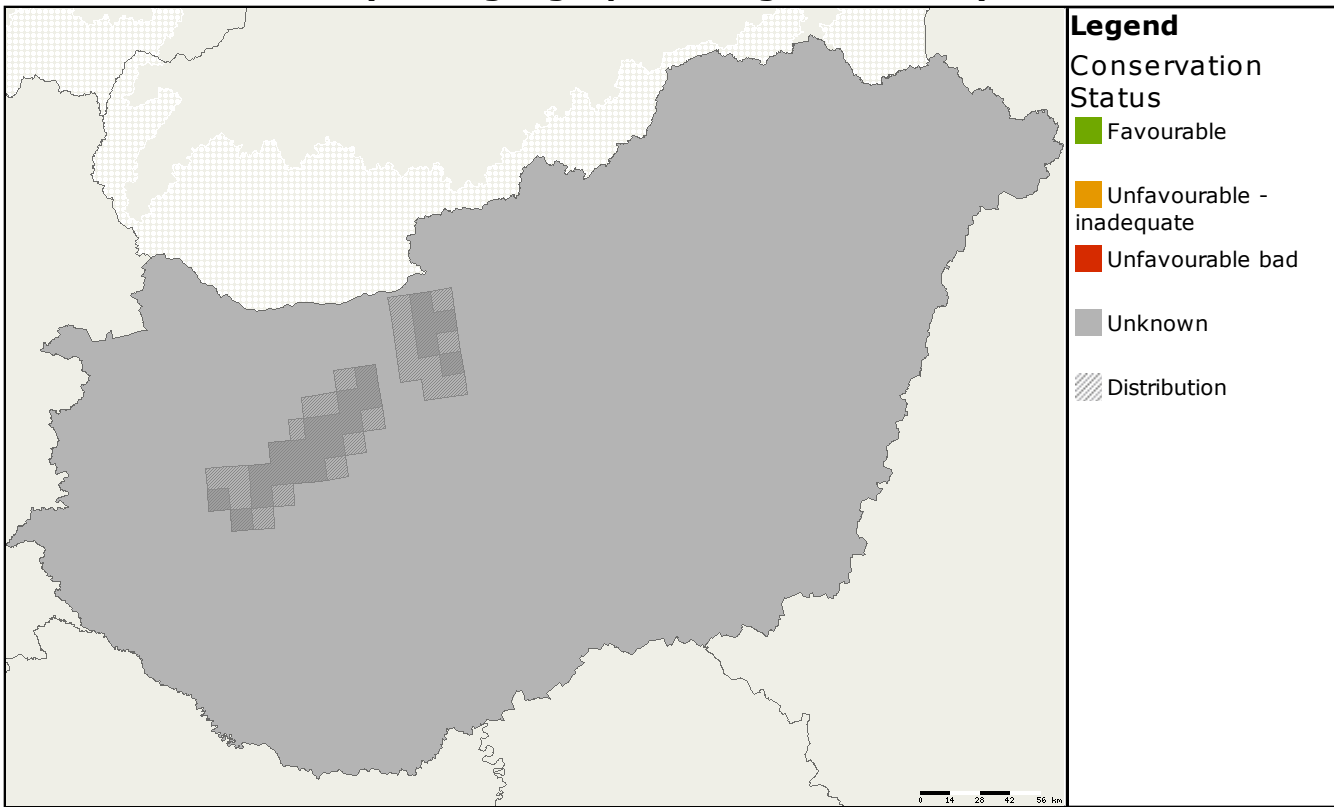
## Assessments of conservation status at the European level (all biogeographical regions - EU25)



MS	Region	Conservation status assessment					Population size & unit	Population Trend
		Range	Population	Habitat	Future prospects	Overall		
EU25	PAN						5000000 -10000000 indiv.	=

PAN: Endemic to HU Assessed as Unfavourable-inadequate due to assessment of suitable habitat

## Assessments of conservation status as reported by Member states (all biogeographical regions - EU25)



MS	Region	Conservation status assessment					Size&unit	Population trend	Data quality
		Range	Population	Habitat	Future prospects	Overall			
HU	PAN						5000000 - 10000000 indiv.	=	3

Data quality is based on an assessment by each Member State, 1 = good, 2 = medium, 3 = poor

This information is derived from the Member State national reports submitted to the European Commission under Article 17 of the Habitats Directive in 2007 and covering the period 2001-2006. More detailed information is available at <http://biodiversity.eionet.europa.eu/article17>