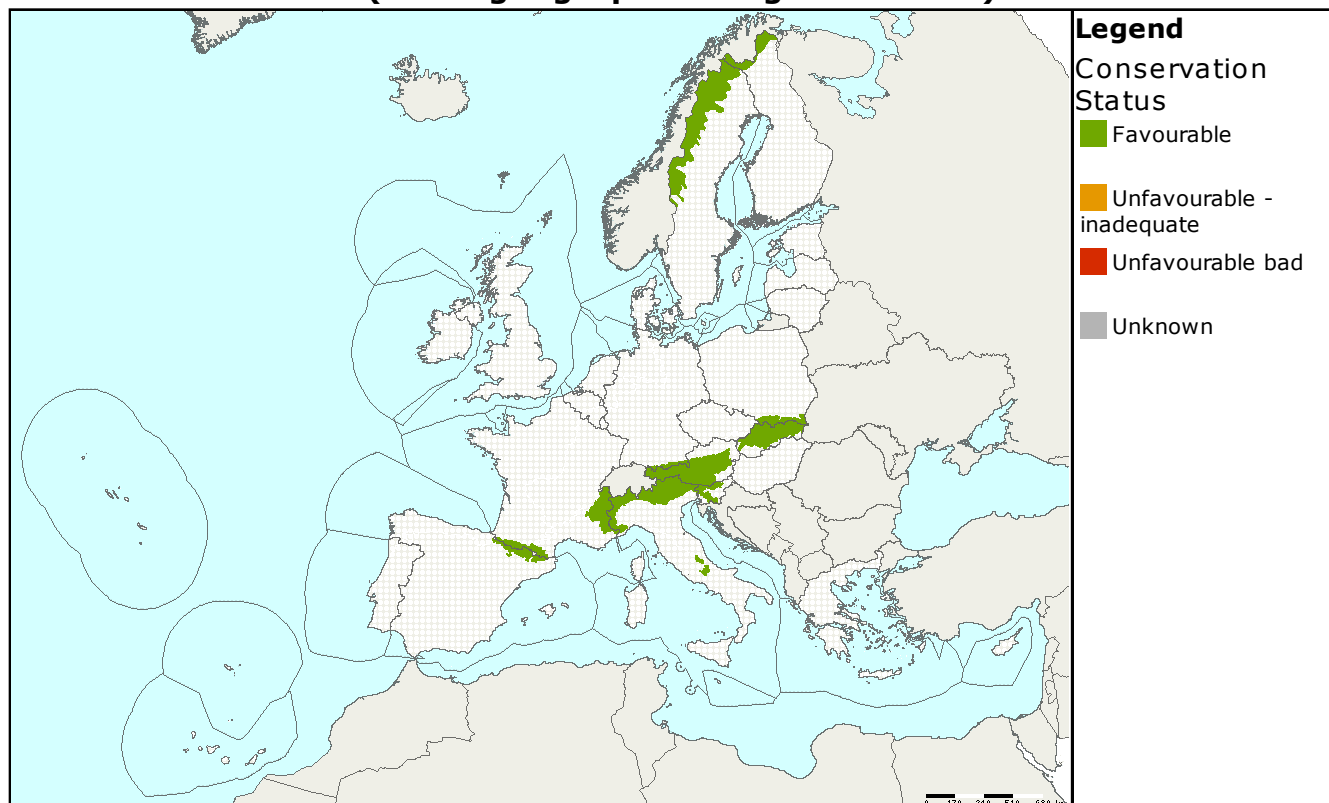


Species name: **Saxifraga tombeanensis**
 Annex: **II, IV**

Species group: **Plants**
 Regions: **ALP**

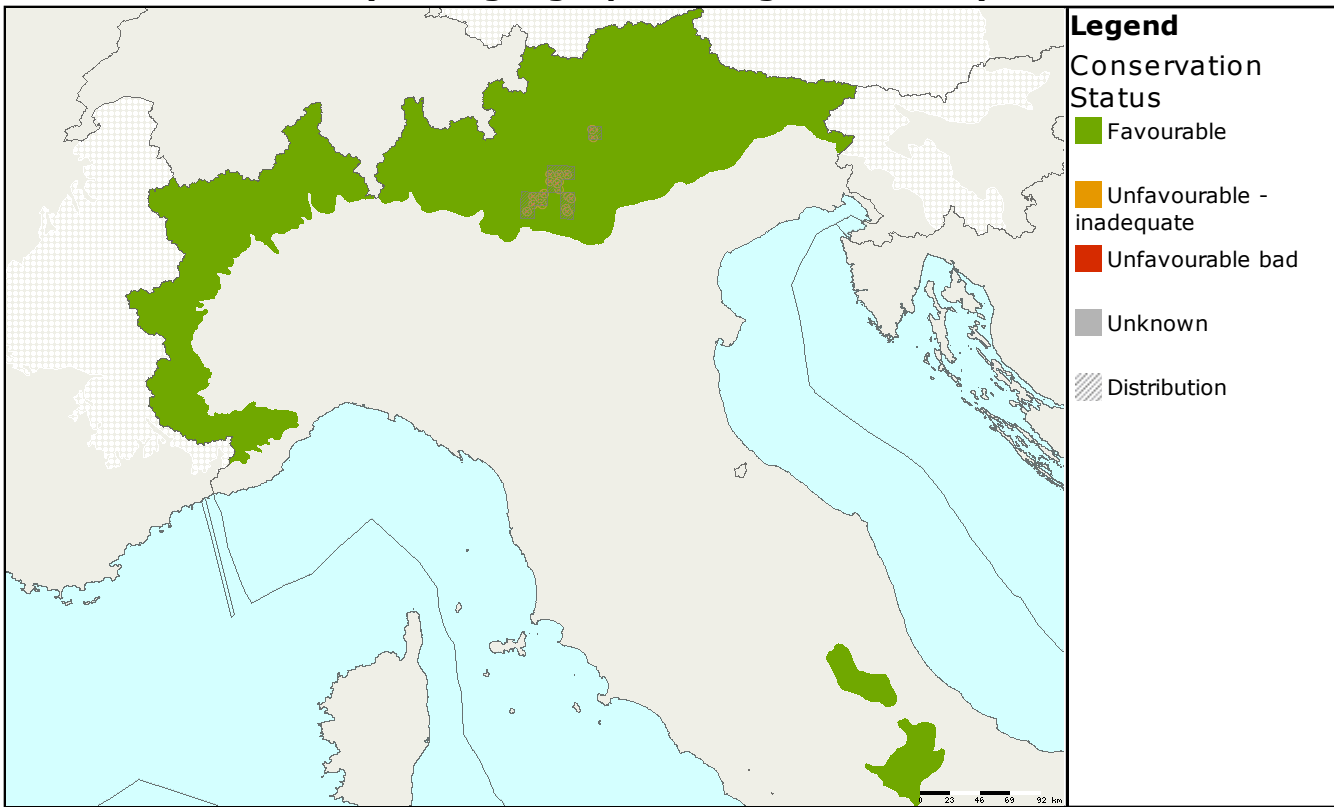
Assessments of conservation status at the European level (all biogeographical regions - EU25)



MS	Region	Conservation status assessment					Population size & unit	Population Trend
		Range	Population	Habitat	Future prospects	Overall		
EU25	ALP						23 loc.	=

ALP: Favourable assessment prevails.

**Assessments of conservation status as reported by Member states
(all biogeographical regions - EU25)**



MS	Region	Conservation status assessment					Size&unit	Population trend	Data quality
		Range	Population	Habitat	Future prospects	Overall			
IT	ALP						23 - 23 loc.	=	2

Data quality is based on an assessment by each Member State, 1 = good, 2 = medium, 3 = poor

This information is derived from the Member State national reports submitted to the European Commission under Article 17 of the Habitats Directive in 2007 and covering the period 2001-2006. More detailed information is available at <http://biodiversity.eionet.europa.eu/article17>