



## *1250 Vegetated sea cliffs with endemic flora of the Macaronesian coasts*

---

<b>Habitat code</b>	1250
<b>Priority</b>	No
<b>Habitat group</b>	Coastal habitats
<b>Regions</b>	Macaronesian

Sea cliffs in Macaronesia are rich in endemic species many of which are unique to a single island or group of islands.

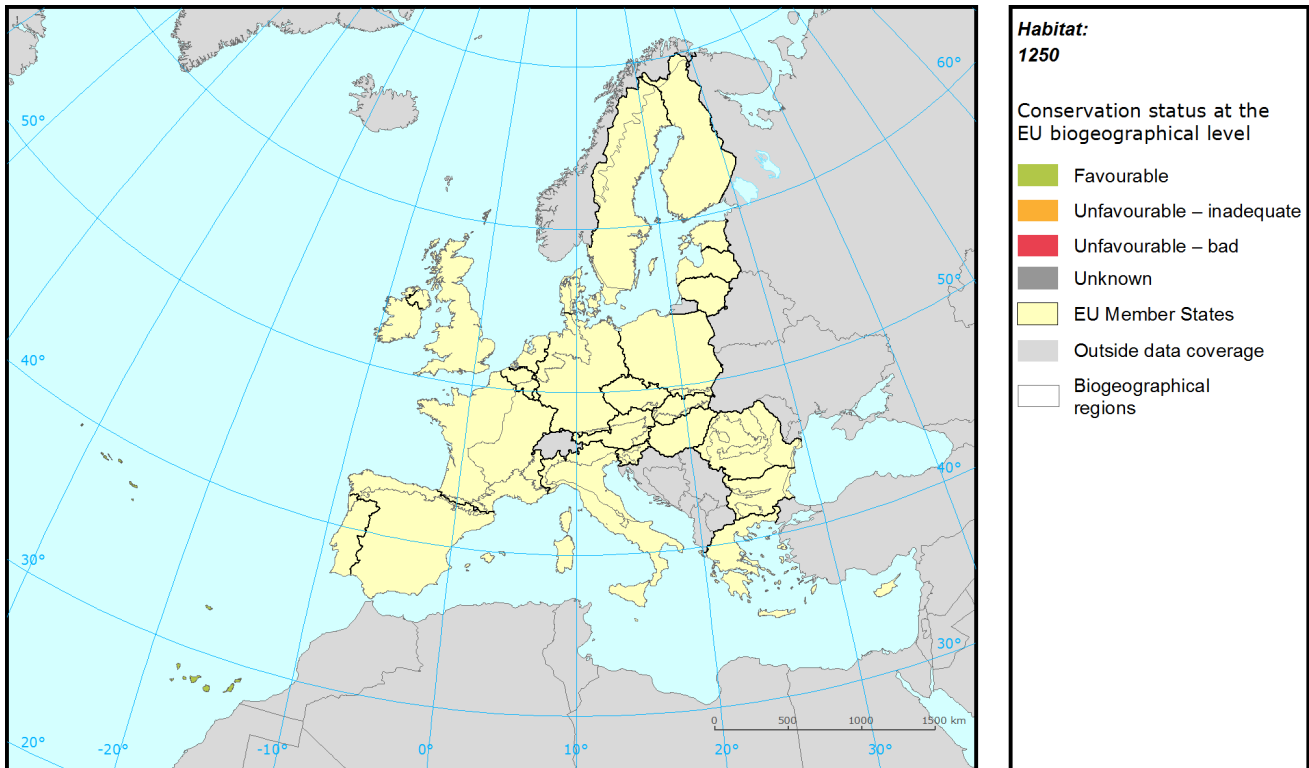
All parameters and overall conclusion is reported as "favourable" reported as favourable by both countries, except structure & functions that is reported as "unknown" from Spain. However the overall conclusion are "favourable".

Pressures are mostly related to human impact, erosion and invasive species.

# Habitat: 1250 *Vegetated sea cliffs with endemic flora of the Macaronesian coasts*

Report under the Article 17 of the Habitats Directive

## Assessment of conservation status at the European biogeographical level



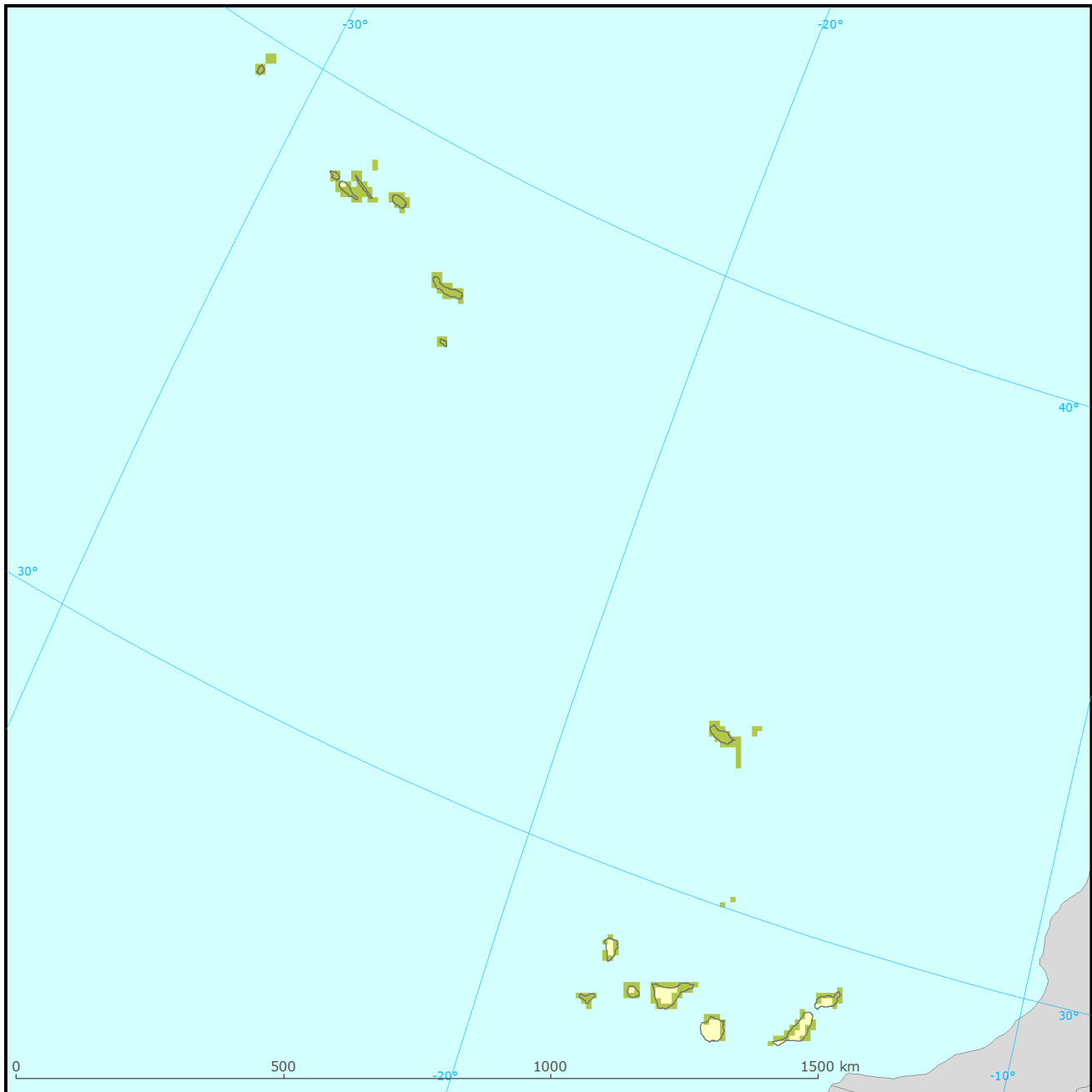
Region	Conservation status (CS) of parameters				Current CS	Trend in CS	% in region	Previous CS	Reason for change
	Range	Area	Structure & Functions	Future prospects					
MAC	FV	FV	FV	FV	FV		100	U1	Not genuine

See the endnote for more information<sup>i</sup>

# Habitat: 1250 *Vegetated sea cliffs with endemic flora of the Macaronesian coasts*

Report under the Article 17 of the Habitats Directive

## Assessment of conservation status at the Member State level



### **Habitat: 1250**

Distribution and conservation status at the Member State level

- |                           |                        |
|---------------------------|------------------------|
| Favourable                | EU Member States       |
| Unfavourable – inadequate | Outside data coverage  |
| Unfavourable – bad        | Biogeographical region |
| Unknown                   |                        |

The map shows both Conservation Status and distribution using a 10 km x 10 km grid. Conservation status is assessed at biogeographical level. Therefore the representation in each grid cell is only illustrative.

# Habitat: 1250 *Vegetated sea cliffs with endemic flora of the Macaronesian coasts*

Report under the Article 17 of the Habitats Directive

MS	Region	Conservation status (CS) of parameters				Current CS	Trend in CS	% in region	Previous CS	Reason for change
		Range	Area	Structure & functions	Future prospects					
ES	MAC	FV	FV	XX	FV		45.0	U1	Changed method	
PT	MAC	FV	FV	FV	FV		55.0	U1	Better data	

Knowing that not all changes in conservation status between the reporting periods were genuine, Member States were asked to give the reasons for changes in conservation status. Bulgaria and Romania only joined the EU in 2007 and Greece did not report for 2007-12 so no reason is given for change for these countries. Greek data shown above is from 2001-06.

## Main pressures and threats reported by Member States

Member States were asked to report the 20 most important threats and pressures using an agreed hierarchical list which can be found on the [Article 17 Reference Portal](#). Pressures are activities which are currently having an impact on the habitats and threats are activities expected to have an impact in the near future. Pressures and threats were ranked in three classes 'high, medium and low importance'; the tables below only show threats and pressures classed as 'high', for some habitats there were less than ten threats or pressures reported as highly important.

### Ten most frequently reported 'highly important' pressures

Code	Activity	Frequency
I01	Invasive alien species	25
K01	Abiotic natural processes	25
L05	Collapse of terrain, landslide	25
L07	Storm, cyclone	25

### Ten most frequently reported 'highly important' threats

Code	Activity	Frequency
I01	Invasive alien species	25
K01	Abiotic natural processes	25
L05	Collapse of terrain, landslide	25
L07	Storm, cyclone	25

# Habitat: 1250 *Vegetated sea cliffs with endemic flora of the Macaronesian coasts*

Report under the Article 17 of the Habitats Directive

## Proportion of population covered by the Natura 2000 network

Member States were asked to report the area of the habitat which is covered by the Natura 2000 network. The percentage of the habitat area covered by the network was estimated by comparing the area within the network and the total area in the biogeographical/marine region.

### Percentage of coverage by Natura 2000 sites in biogeographical/marine region

MAC	
ES	39
PT	11

See the endnotes for more information<sup>ii</sup>

## Most frequently reported conservation measures

Member States were asked to report up to 20 conservation measures being implemented for this habitat using an agreed list which can be found on the Article 17 Reference Portal. Member States were further requested to highlight up to five most important ('highly important') measures; the table below only shows measures classed as 'high', for many habitats there were less than ten measures reported as highly important.

### Ten most frequently reported 'highly important' conservation measures

Code	Measure	Frequency
2.0	Other agriculture-related measures	20
6.0	Other spatial measures	20
6.1	Establish protected areas/sites	20
6.3	Legal protection of habitats and species	20
9.1	Regulating/Management exploitation of natural resources on land	20

This information is derived from the Member State national reports submitted to the European Commission under Article 17 of the Habitats Directive in 2013 and covering the period 2007-2012. More detailed information, including the MS reports, is available at:

<http://bd.eionet.europa.eu/article17/reports2012/habitat/summary/?group=Coastal+habitats&period=3&subject=1250>

# Habitat: 1250 *Vegetated sea cliffs with endemic flora of the Macaronesian coasts*

Report under the Article 17 of the Habitats Directive

**i Assessment of conservation status at the European biogeographical level:** Current Conservation Status (Current CS) shows the status for the reporting period 2007-2012, Previous Conservation Status (Previous CS) for the reporting period 2000-2006. Reason for change in conservation status between the reporting periods indicates whether the changes in the status were genuine or not genuine. Previous Conservation Status was not assessed for Steppic, Black Sea and Marine Black Sea regions. For these regions the Previous status is therefore considered as 'unknown'. The percentage of the habitat area occurring within the biogeographical/marine region (% in region) is calculated based on the area of GIS distribution.

**ii Percentage of coverage by Natura 2000 sites in biogeographical/marine region:** In some cases the population size within the Natura 2000 network has been estimated using a different methodology to the estimate of overall population size and this can lead to percentage covers greater than 100%. In such case the value has been given as 100% and highlighted with an asterisk (\*). The value 'x' indicates that the Member State has not reported the habitat area and/or the coverage by Natura 2000. No information is available for Greece. The values are only provided for regions, in which the occurrence of the habitat has been reported by the Member States.