



9110 *Luzulo-Fagetum* beech forests

Habitat code	9110
Priority	No
Habitat group	Forests
Regions	Alpine, Atlantic, Boreal, Continental, Mediterranean, Pannonian

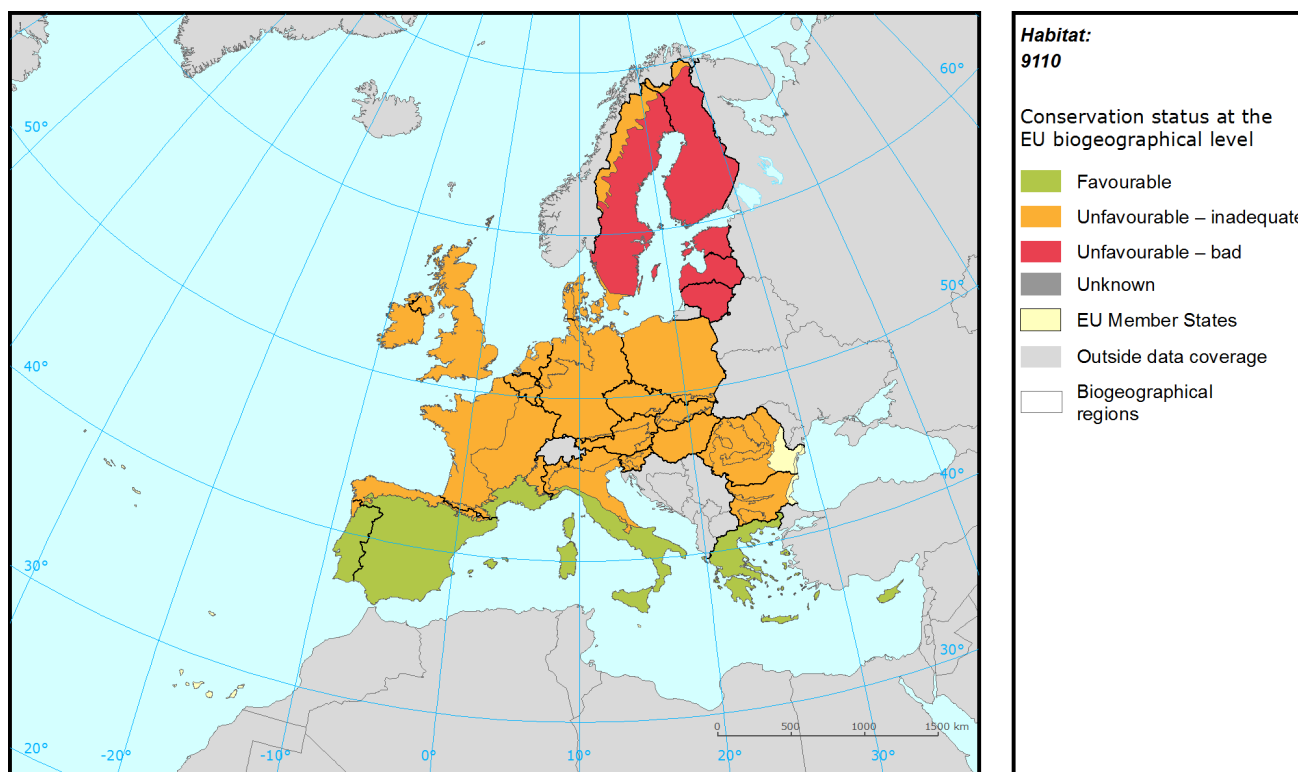
This type of beech forest represents the climax vegetation on the acidic soils of collinar and mountainous regions of central Europe and mountainous regions in southern Europe. Beech (*Fagus sylvatica*) dominates the tree layer, together with spruce (*Picea abies*) and European silver fir (*Abies alba*) in mountains. The habitat occurs in areas with sub-atlantic climate; extreme Atlantic or continental climatic conditions are not suitable and other beech forests are found here such as habitat type 9120. The herb layer is species poor and not very abundant, composed of acidophilous herbs and grasses.

The conservation status was assessed as "favourable" only in the Mediterranean region, where the habitat is present mainly in mountainous areas. The conservation status in the Boreal region (occur only Sweden), where the climatic condition are in general inappropriate the status of the habitat is "unfavourable bad". In the Alpine region the conservation status is "unfavourable inadequate" although many assessments was "favourable" by the countries. On the western margin of the habitats distribution the conservation status is "unfavourable inadequate". In the Continental region with the majority of this habitat occurs the conservation status is "unfavourable inadequate", but several countries has reported "bad" status.

Habitat: 9110 *Luzulo-Fagetum* beech forests

Report under the Article 17 of the Habitats Directive

Assessment of conservation status at the European biogeographical level



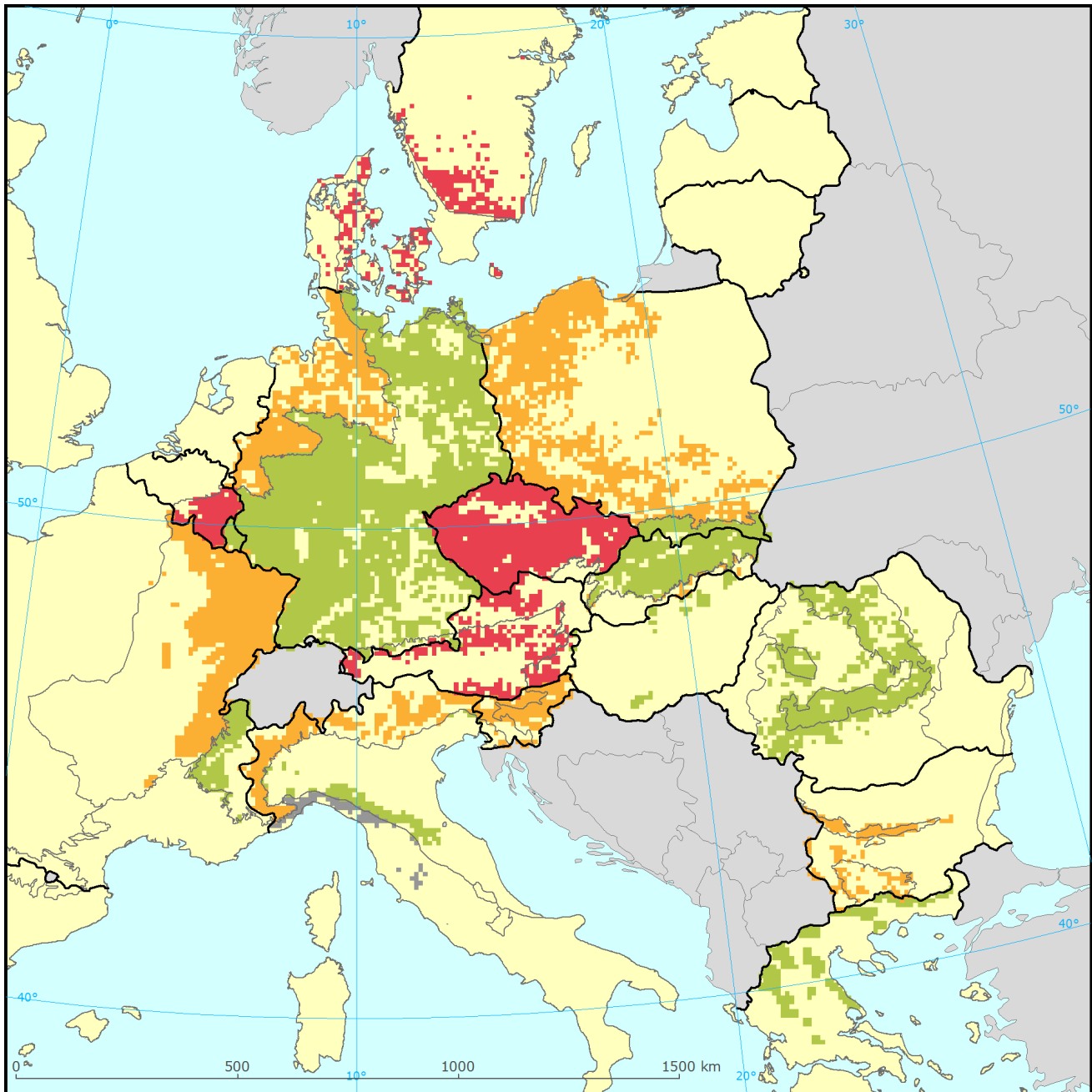
Region	Conservation status (CS) of parameters				Current CS	Trend in CS	% in region	Previous CS	Reason for change
	Range	Area	Structure & Functions	Future prospects					
ALP	FV	FV	U1	U1	U1	=	19	U1	
ATL	FV	FV	U1	U1	U1	=	6	U1	
BOR	FV	U2	U1	U2	U2	+	2	U2	
CON	FV	FV	U1	U1	U1	=	70	U2	Not genuine
MED	FV	FV	FV	FV	FV	=	2	FV	
PAN	FV	U1	FV	FV	U1	=	0.89	U2	Not genuine

See the endnote for more informationⁱ

Habitat: 9110 *Luzulo-Fagetum* beech forests

Report under the Article 17 of the Habitats Directive

Assessment of conservation status at the Member State level



Habitat: 9110

Distribution and conservation status at the Member State level

- | | |
|---------------------------|------------------------|
| Favourable | EU Member States |
| Unfavourable – inadequate | Outside data coverage |
| Unfavourable – bad | Biogeographical region |
| Unknown | |

The map shows both Conservation Status and distribution using a 10 km x 10 km grid. Conservation status is assessed at biogeographical level. Therefore the representation in each grid cell is only illustrative.

Habitat: 9110 *Luzulo-Fagetum* beech forests

Report under the Article 17 of the Habitats Directive

MS	Region	Conservation status (CS) of parameters				Current CS	Trend in CS	% in region	Previous CS	Reason for change
		Range	Area	Structure & functions	Future prospects					
AT	ALP	FV	FV	U2	U2	U2	=	12.4	U1	Changed method
BG	ALP	FV	FV	U1	U1	U1	=	6.1		
DE	ALP	FV	FV	FV	FV	FV		1.5	FV	
FR	ALP	FV	FV	XX	FV	FV		8.1	FV	
IT	ALP	FV	FV	U1	U1	U1	-	17.7	FV	Changed method
PL	ALP	FV	FV	FV	FV	FV		6.5	FV	
RO	ALP	FV	FV	FV	FV	FV		24.5		
SI	ALP	FV	FV	U1	FV	U1	+	3.3	FV	Changed method
SK	ALP	FV	FV	FV	FV	FV		19.9	FV	
DE	ATL	FV	FV	U1	U1	U1	=	96.8	U1	
DK	ATL	FV	FV	U2	U2	U2	=	2.1	FV	Changed method
FR	ATL	XX	XX	U1	U1	U1	=	0.6	U1	
NL	ATL	FV	FV	U1	U1	U1	=	0.4	U1	
SE	BOR	FV	U2	U1	U2	U2	+	100.0	U2	Better data
AT	CON	U1	FV	U2	U2	U2	=	2.0	U2	
BE	CON	FV	U1	U2	U2	U2	-	1.9	U2	Genuine
BG	CON	FV	FV	U1	U1	U1	=	1.1		
CZ	CON	FV	FV	U2	U1	U2	=	12.1	U2	Changed method
DE	CON	FV	FV	FV	FV	FV		39.9	FV	
DK	CON	FV	FV	U2	U2	U2	=	2.1	FV	Changed method
FR	CON	FV	FV	U1	U1	U1	=	12.1	U1	
IT	CON	FV	FV	FV	FV	FV		1.8	FV	
LU	CON	FV	FV	FV	FV	FV		0.4	U1	Changed method
PL	CON	FV	U1	U1	U1	U1	+	18.7	U1	
RO	CON	FV	FV	FV	FV	FV		4.3		
SE	CON	FV	U2	U1	U2	U2	x	1.9	U2	Better data
SI	CON	FV	FV	U1	FV	U1	+	1.7	FV	Changed method
GR	MED	FV	FV	FV	FV	FV		56.4	FV	
IT	MED	FV	FV	XX	XX	XX		43.6	FV	No data
HU	PAN	FV	FV	FV	FV	FV		64.3	U2	Changed method
SK	PAN	FV	U1	FV	FV	U1	=	35.7	U1	

Knowing that not all changes in conservation status between the reporting periods were genuine, Member States were asked to give the reasons for changes in conservation status.

Habitat: 9110 *Luzulo-Fagetum* beech forests

Report under the Article 17 of the Habitats Directive

Bulgaria and Romania only joined the EU in 2007 and Greece did not report for 2007-12 so no reason is given for change for these countries. Greek data shown above is from 2001-06.

Main pressures and threats reported by Member States

Member States were asked to report the 20 most important threats and pressures using an agreed hierarchical list which can be found on the [Article 17 Reference Portal](#). Pressures are activities which are currently having an impact on the habitats and threats are activities expected to have an impact in the near future. Pressures and threats were ranked in three classes 'high, medium and low importance'; the tables below only show threats and pressures classed as 'high', for some habitats there were less than ten threats or pressures reported as highly important.

Ten most frequently reported 'highly important' pressures

Code	Activity	Frequency
B02	Forest and plantation management & use	33
F03	Hunting and collection of terrestrial wild animals	13
B07	Other forestry activities	8
H04	Air pollution, air-borne pollutants	8
J03	Other changes to ecosystems	8
K02	Vegetation succession/Biocenotic evolution	8
K04	Interspecific floral relations	8
B03	Forest exploitation	4
G02	Sport and leisure infrastructures	4
G05	Other human intrusions and disturbances	4

Ten most frequently reported 'highly important' threats

Code	Activity	Frequency
B02	Forest and plantation management & use	25
H04	Air pollution, air-borne pollutants	14
F03	Hunting and collection of terrestrial wild animals	11
J03	Other changes to ecosystems	7
K02	Vegetation succession/Biocenotic evolution	7
K04	Interspecific floral relations	7
B03	Forest exploitation	4
B07	Other forestry activities	4
E06	Other urban/industrial developments	4
G02	Sport and leisure infrastructures	4

Habitat: 9110 *Luzulo-Fagetum* beech forests

Report under the Article 17 of the Habitats Directive

Proportion of population covered by the Natura 2000 network

Member States were asked to report the area of the habitat which is covered by the Natura 2000 network. The percentage of the habitat area covered by the network was estimated by comparing the area within the network and the total area in the biogeographical/marine region.

Percentage of coverage by Natura 2000 sites in biogeographical/marine region

	ALP	ATL	BOR	CON	MED	PAN
AT	14			62		
BE				60		
BG	96			100		
CZ				45		
DE	83	44		37		
DK		20		22		
FR	x	90		x		
HU						91
IT	14			12	30	
LU				37		
NL		100				
PL	77			34		
RO	54			9		
SE			86	100		
SI	7			10		
SK	18					35

See the endnotes for more informationⁱⁱ

Habitat: 9110 *Luzulo-Fagetum* beech forests

Report under the Article 17 of the Habitats Directive

Most frequently reported conservation measures

Member States were asked to report up to 20 conservation measures being implemented for this habitat using an agreed list which can be found on the Article 17 Reference Portal. Member States were further requested to highlight up to five most important ('highly important') measures; the table below only shows measures classed as 'high', for many habitats there were less than ten measures reported as highly important.

Ten most frequently reported 'highly important' conservation measures

Code	Measure	Frequency
6.1	Establish protected areas/sites	28
3.2	Adapt forest management	23
3.1	Restoring/improving forest habitats	20
6.2	Establishing wilderness areas/ allowing succession	8
6.3	Legal protection of habitats and species	7
3.0	Other forestry-related measures	3
4.2	Restoring/improving the hydrological regime	3
6.4	Manage landscape features	3
9.1	Regulating/Management exploitation of natural resources on land	3
6.0	Other spatial measures	2

This information is derived from the Member State national reports submitted to the European Commission under Article 17 of the Habitats Directive in 2013 and covering the period 2007-2012. More detailed information, including the MS reports, is available at:

<http://bd.eionet.europa.eu/article17/reports2012/habitat/summary/?group=Forests&period=3&subject=9110>

Habitat: 9110 *Luzulo-Fagetum* beech forests

Report under the Article 17 of the Habitats Directive

i Assessment of conservation status at the European biogeographical level: Current Conservation Status (Current CS) shows the status for the reporting period 2007-2012, Previous Conservation Status (Previous CS) for the reporting period 2000-2006. Reason for change in conservation status between the reporting periods indicates whether the changes in the status were genuine or not genuine. Previous Conservation Status was not assessed for Steppic, Black Sea and Marine Black Sea regions. For these regions the Previous status is therefore considered as 'unknown'. The percentage of the habitat area occurring within the biogeographical/marine region (% in region) is calculated based on the area of GIS distribution.

ii Percentage of coverage by Natura 2000 sites in biogeographical/marine region: In some cases the population size within the Natura 2000 network has been estimated using a different methodology to the estimate of overall population size and this can lead to percentage covers greater than 100%. In such case the value has been given as 100% and highlighted with an asterisk (*). The value 'x' indicates that the Member State has not reported the habitat area and/or the coverage by Natura 2000. No information is available for Greece. The values are only provided for regions, in which the occurrence of the habitat has been reported by the Member States.