



Steno bredanensis

Annex	IV
Priority	No
Species group	Mammals
Regions	Marine Macaronesian, Marine Mediterranean

Steno bredanensis

The rough-toothed dolphin, *Steno bredanensis*, inhabits the tropical to subtropical deep oceanic waters of the Atlantic ocean . In the Marine Mediterranean region, the species is present only in Italy and Malta. Both countries report the species as “occasional, vagrant or marginal “, and no values are reported from any country. However, Italy has left an evaluation and that has been used for assessment for the region, method 00. All parameters are unknown, with unknown trend. Conclusion for the region is unknown (XX). The conclusion for the Marine Atlantic region is also unknown (XX).

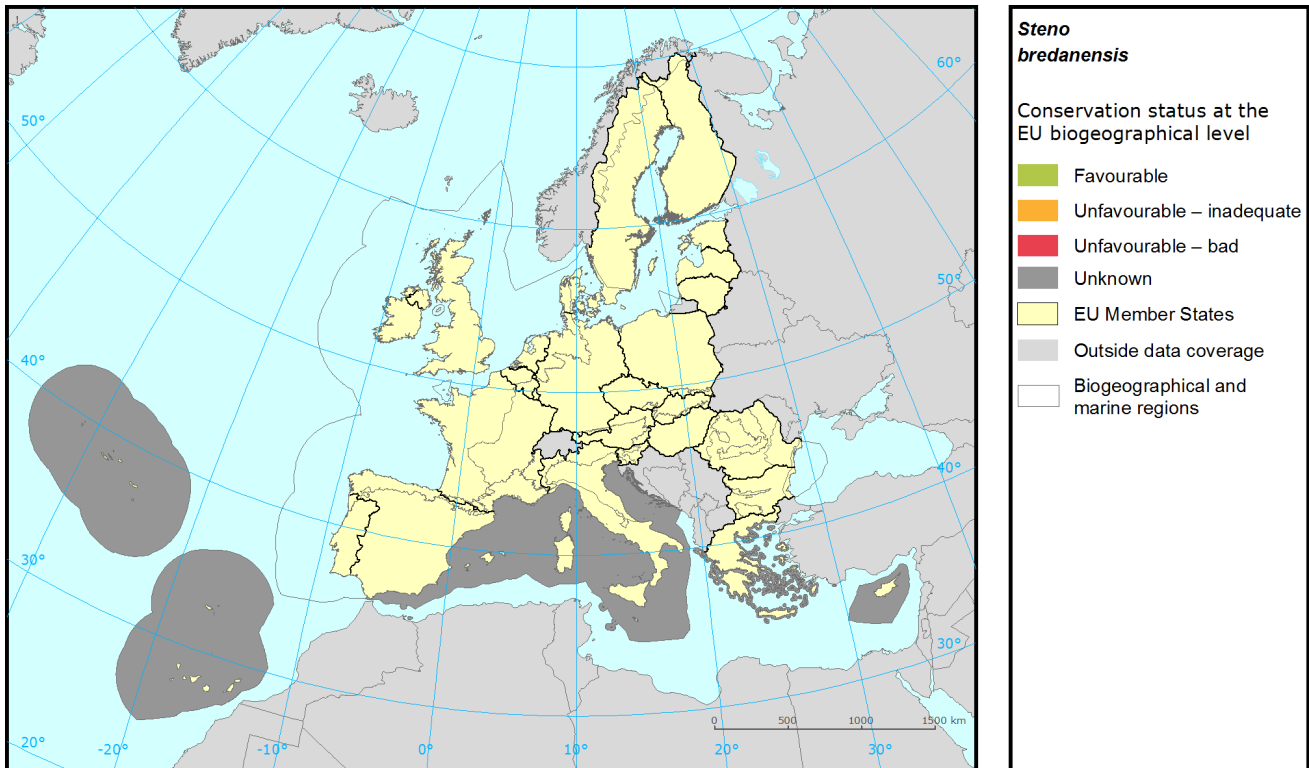
The species is listed as ‘data deficient’ in the IUCN Red List of threatened species. Thus, more data is needed for the species.

Main pressures and threats reported in the Marine Atlantic region are; reduction or loss of specific habitat features, Shipping lanes, wildlife watching, Military manoeuvres, marine water pollution including macro pollution and noise pollution.

Species: *Steno bredanensis*

Report under the Article 17 of the Habitats Directive

Assessment of conservation status at the European biogeographical level



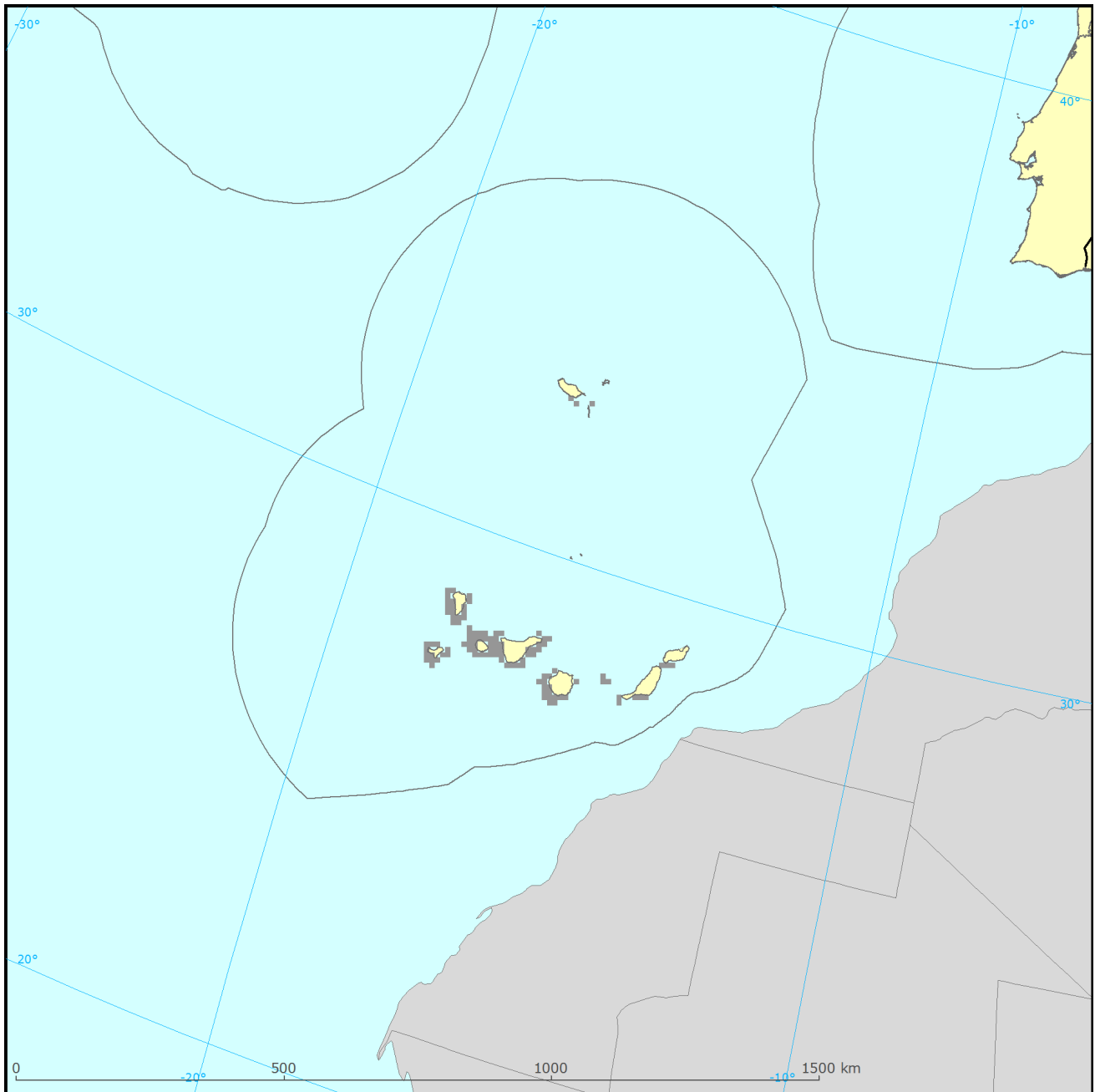
Region	Conservation status (CS) of parameters				Current CS	Trend in CS	% in region	Previous CS	Reason for change
	Range	Population	Habitat	Future prospects					
MMAC	FV	XX	XX	XX	XX	x	100	XX	
MMED	XX	XX	XX	XX	XX	x		XX	

See the endnote for more informationⁱ

Species: *Steno bredanensis*

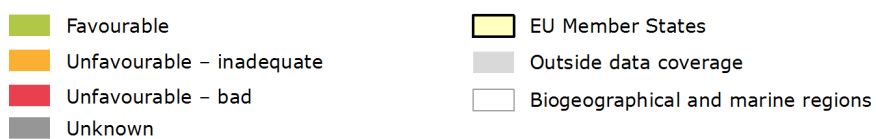
Report under the Article 17 of the Habitats Directive

Assessment of conservation status at the Member State level



Steno bredanensis

Distribution and conservation status at the Member State level



The map shows both Conservation Status and distribution using a 10 km x 10 km grid. Conservation status is assessed at biogeographical level. Therefore the representation in each grid cell is only illustrative.

Species: *Steno bredanensis*

Report under the Article 17 of the Habitats Directive

MS Region	Conservation status of parameters				Current CS	Trend in CS	% in region	Previous CS	Reason for change
	Range	Population	Habitat	Future prospects					
ES MMAC	FV	XX	XX	XX	XX		97.2	XX	
PT MMAC	XX	XX	XX	XX	XX		2.8	XX	
IT MMED	XX	XX	XX	XX	XX				
MT MMED								XX	

Knowing that not all changes in conservation status between the reporting periods were genuine, Member States were asked to give the reasons for changes in conservation status. Bulgaria and Romania only joined the EU in 2007 and Greece did not report for 2007-12 so no reason is given for change for these countries. Greek data shown above is from 2001-06.

Main pressures and threats reported by Member States

Member States were asked to report the 20 most important threats and pressures using an agreed hierarchical list which can be found on the [Article 17 Reference Portal](#). Pressures are activities which are currently having an impact on the species and threats are activities expected to have an impact in the near future. Pressures and threats were ranked in three classes 'high, medium and low importance'; the tables below only show threats and pressures classed as 'high', for some species there were less than ten threats or pressures reported as highly important.

Ten most frequently reported 'highly important' pressures

Code	Activity	Frequency
No 'highly important' pressures were reported.		

Ten most frequently reported 'highly important' threats

Code	Activity	Frequency
No 'highly important' threats were reported.		

This information is derived from the Member State national reports submitted to the European Commission under Article 17 of the Habitats Directive in 2013 and covering the period 2007-2012. More detailed information, including the MS reports, is available at:

<http://bd.eionet.europa.eu/article17/reports2012/species/summary/?group=Mammals&period=3&subject=Steno+bredanensis>

Species: *Steno bredanensis*

Report under the Article 17 of the Habitats Directive

i Assessment of conservation status at the European biogeographical level: Current Conservation Status (Current CS) shows the status for the reporting period 2007-2012, Previous Conservation Status (Previous CS) for the reporting period 2000-2006. Reason for change in conservation status between the reporting periods indicates whether the changes in the status were genuine or not genuine. Previous Conservation Status was not assessed for Steppic, Black Sea and Marine Black Sea regions. For these regions the Previous status is therefore considered as 'unknown'. The percentage of the species population occurring within the biogeographical/marine region (% in region) is calculated based on the area of GIS distribution.