



Bencomia sphaerocarpa

| | |
|----------------------|-----------------|
| Annex | II, IV |
| Priority | No |
| Species group | Vascular plants |
| Regions | Macaronesian |

The plant *Bencomia sphaerocarpa* grows isolated and scattered on slopes and distributed in small groups in more sheltered areas from 400 to 1,200 m asl., in the Macaronesian biogeographic region. The species is endemic to the island of El Hierro, Canary Islands, Spain. The total population of this species is estimated as 61 individuals. The area of occupancy of the species has been calculated to be 0.75 km². This species occur on 3 sites: Tinco, Hoya de Fileba and Tábano. The IUCN Red List classifies the species as Critically Endangered (CR).

The conservation status is "Unfavourable Inadequate", the previous conservation status was considered "Unfavourable Bad. The future prospect is "Unfavourable Inadequate" and the trend is stable.

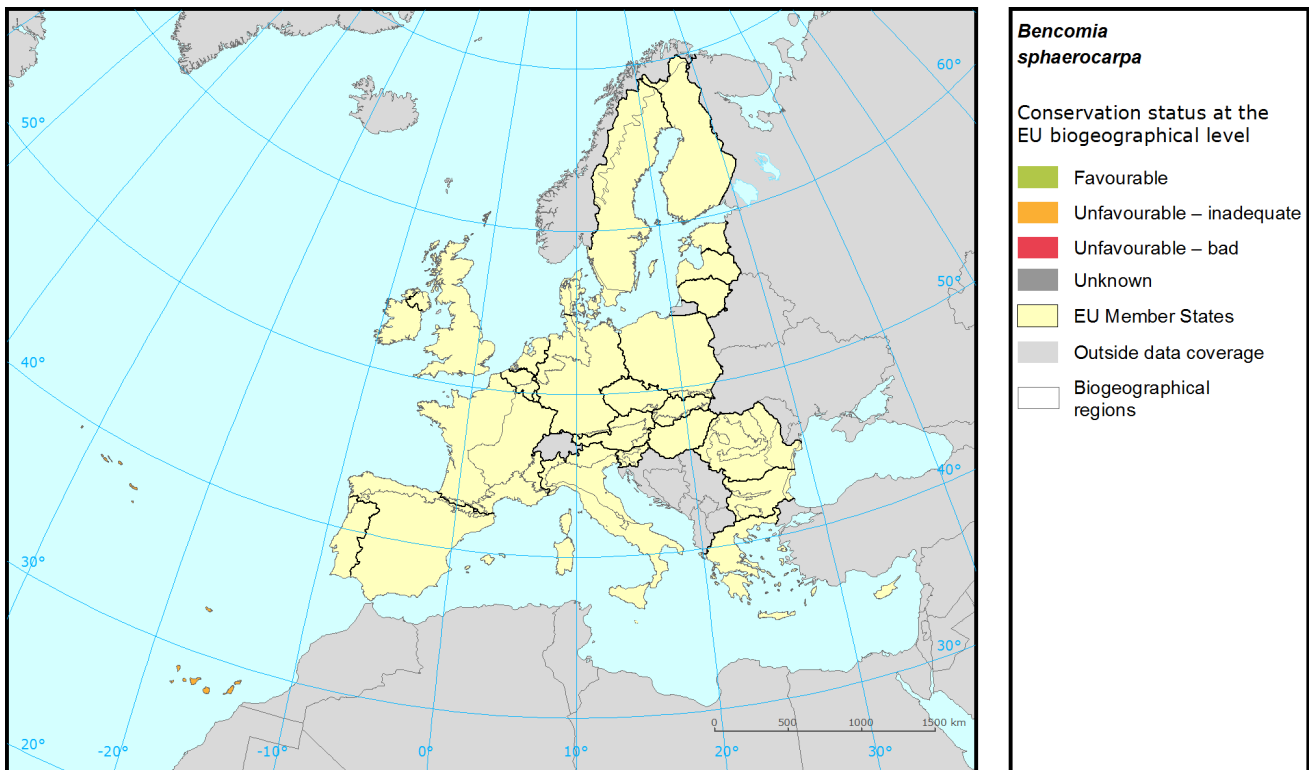
The species is threatened mostly by the damage by herbivores, droughts and less precipitations. Fires, storms and landslides, and drought events are also regarded as threats.

Changes in overall conservation status between 2001-06 and 2007-12 report are mostly caused by different methodical approach and better data rather than real change in conservation status.

Species: *Bencomia sphaerocarpa*

Report under the Article 17 of the Habitats Directive

Assessment of conservation status at the European biogeographical level

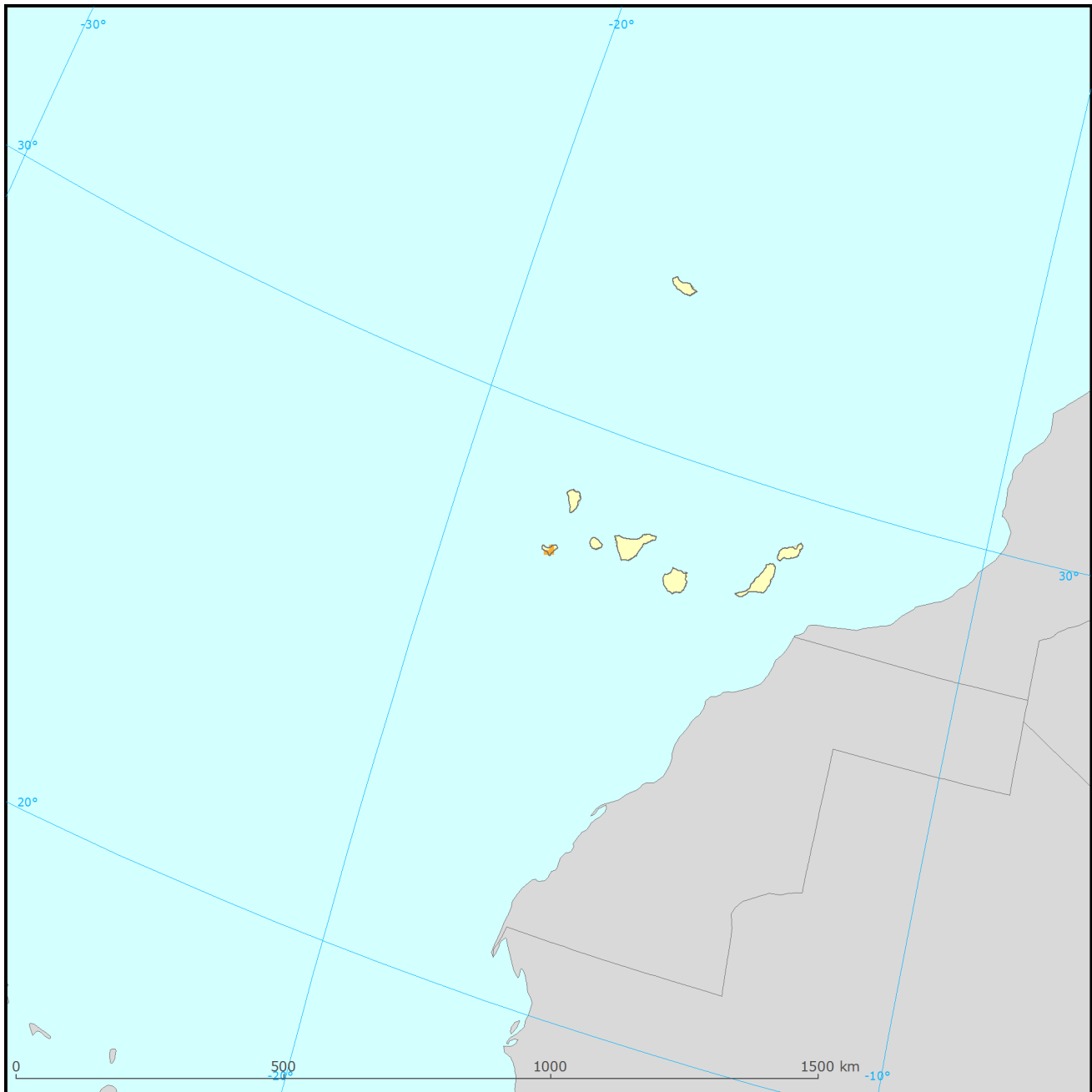


| Region | Conservation status (CS) of parameters | | | | Current CS | Trend in CS | % in region | Previous CS | Reason for change |
|--------|--|------------|---------|------------------|------------|-------------|-------------|-------------|-------------------|
| | Range | Population | Habitat | Future prospects | | | | | |
| MAC | FV | U1 | FV | U1 | U1 | = | 100 | U2 | Not genuine |

See the endnote for more informationⁱ

Species: *Bencomia sphaerocarpa*
Report under the Article 17 of the Habitats Directive

Assessment of conservation status at the Member State level



Bencomia sphaerocarpa

Distribution and conservation status at the Member State level

- | | |
|---------------------------|------------------------|
| Favourable | EU Member States |
| Unfavourable – inadequate | Outside data coverage |
| Unfavourable – bad | Biogeographical region |
| Unknown | |

The map shows both Conservation Status and distribution using a 10 km x 10 km grid. Conservation status is assessed at biogeographical level. Therefore the representation in each grid cell is only illustrative.

Species: *Bencomia sphaerocarpa*

Report under the Article 17 of the Habitats Directive

| MS | Region | Conservation status of parameters | | | | Current CS | Trend in CS | % in region | Previous CS | Reason for change |
|----|--------|-----------------------------------|------------|---------|------------------|------------|-------------|-------------|----------------|-------------------|
| | | Range | Population | Habitat | Future prospects | | | | | |
| ES | MAC | FV | U1 | FV | U1 | = | 100.0 | U2- | Changed method | |

Knowing that not all changes in conservation status between the reporting periods were genuine, Member States were asked to give the reasons for changes in conservation status. Bulgaria and Romania only joined the EU in 2007 and Greece did not report for 2007-12 so no reason is given for change for these countries. Greek data shown above is from 2001-06.

Main pressures and threats reported by Member States

Member States were asked to report the 20 most important threats and pressures using an agreed hierarchical list which can be found on the [Article 17 Reference Portal](#). Pressures are activities which are currently having an impact on the species and threats are activities expected to have an impact in the near future. Pressures and threats were ranked in three classes 'high, medium and low importance'; the tables below only show threats and pressures classed as 'high', for some species there were less than ten threats or pressures reported as highly important.

Ten most frequently reported 'highly important' pressures

| Code | Activity | Frequency |
|--|----------|-----------|
| No 'highly important' pressures were reported. | | |

Ten most frequently reported 'highly important' threats

| Code | Activity | Frequency |
|--|----------|-----------|
| No 'highly important' threats were reported. | | |

Proportion of population covered by the Natura 2000 network

For species listed in the Annex II of the Directive Member States were asked to report the population size within the Natura 2000 network. The percentage of species population covered by the network was estimated by comparing the population size within the network and the total population size in the biogeographical/marine region.

Percentage of coverage by Natura 2000 sites in biogeographical/marine region

| MAC | |
|-----|-----|
| ES | 100 |

See the endnotes for more informationⁱⁱ

Species: *Bencomia sphaerocarpa*

Report under the Article 17 of the Habitats Directive

Most frequently reported conservation measures

For species listed in the Annex II of the Directive Member States were asked to report up to 20 conservation measures being implemented for this species using an agreed list which can be found on the Article 17 Reference Portal. Member States were further requested to highlight up to five most important ('highly important') measures; the table below only shows measures classed as 'high', for many species there were less than ten measures reported as highly important.

Ten most frequently reported 'highly important' conservation measures

| Code | Measure | Frequency |
|------|--|-----------|
| 6.1 | Establish protected areas/sites | 33 |
| 6.3 | Legal protection of habitats and species | 33 |
| 7.4 | Specific single species or species group management measures | 33 |

This information is derived from the Member State national reports submitted to the European Commission under Article 17 of the Habitats Directive in 2013 and covering the period 2007-2012. More detailed information, including the MS reports, is available at:

<http://bd.eionet.europa.eu/article17/reports2012/species/summary/?group=Vascular+plants&period=3&subject=Bencomia+sphaerocarpa>

Species: *Bencomia sphaerocarpa*

Report under the Article 17 of the Habitats Directive

i Assessment of conservation status at the European biogeographical level: Current Conservation Status (Current CS) shows the status for the reporting period 2007-2012, Previous Conservation Status (Previous CS) for the reporting period 2000-2006. Reason for change in conservation status between the reporting periods indicates whether the changes in the status were genuine or not genuine. Previous Conservation Status was not assessed for Steppic, Black Sea and Marine Black Sea regions. For these regions the Previous status is therefore considered as 'unknown'. The percentage of the species population occurring within the biogeographical/marine region (% in region) is calculated based on the area of GIS distribution.

ii Percentage of coverage by Natura 2000 sites in biogeographical/marine region: In some cases the population size within the Natura 2000 network has been estimated using a different methodology to the estimate of overall population size and this can lead to percentage covers greater than 100%. In such case the value has been given as 100% and highlighted with an asterisk (*). The value 'x' indicates that the Member State has not reported the species population and/or the coverage by Natura 2000. No information is available for Greece. The values are only provided for regions, in which the occurrence of the species has been reported by the Member States.