



**Roinn Cumarsáide, Gníomhaithe
ar son na hAeráide & Comhshaoil**
Department of Communications,
Climate Action & Environment

Planning for Climate Resilience

A National and Regional Approach to CCA in Ireland

John O'Neill

Eionet Workshop – Copenhagen

7th June 2018

National Policy & Legislation

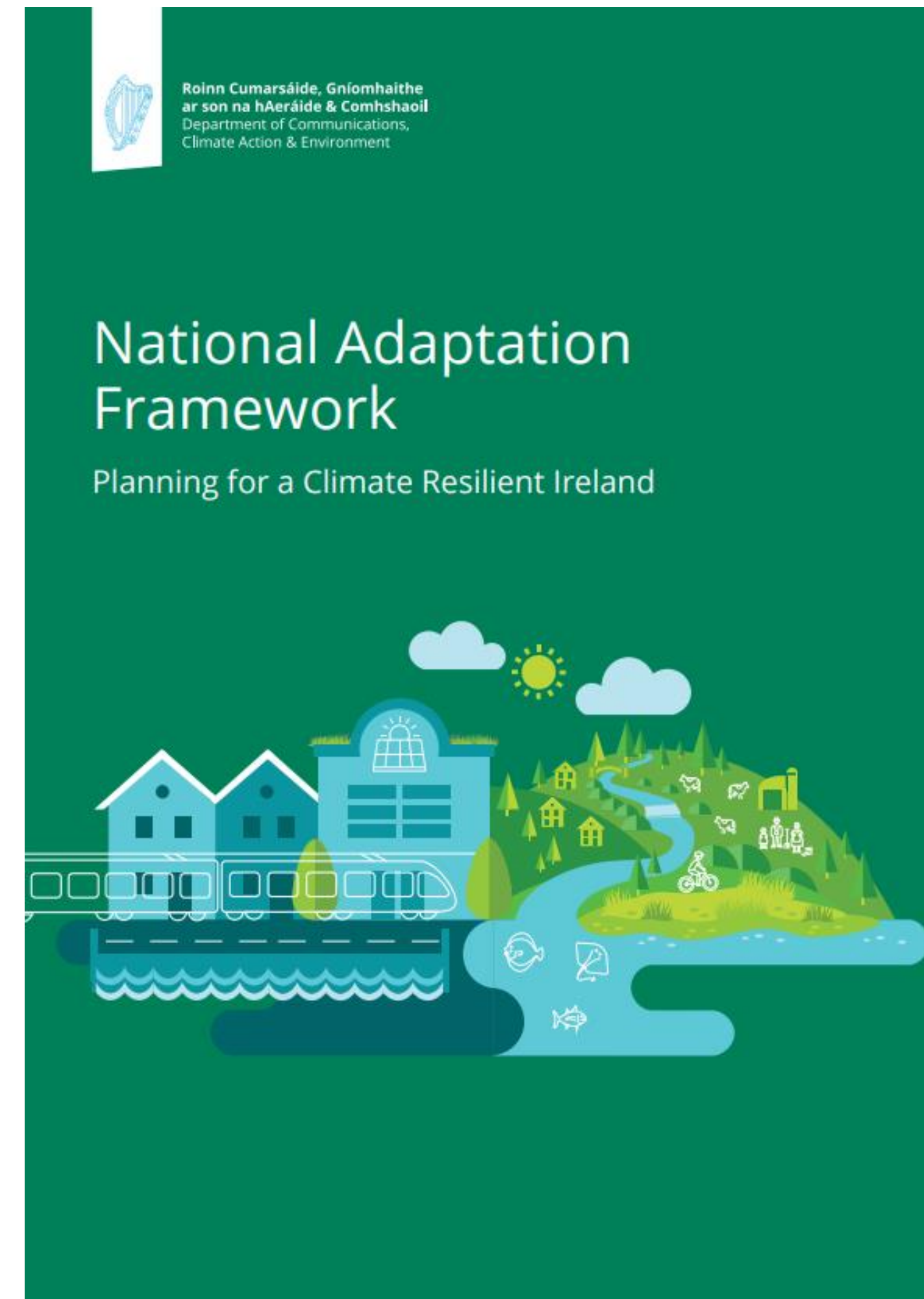


- National Policy Position 2014
 - *Transition to a competitive, low carbon, **climate resilient** and environmentally sustainable economy by 2050*
- Achieved through National Low Carbon Roadmaps and **National CC Adaptation Frameworks**
- Climate Action and Low Carbon Development Act 2015

National Adaptation Framework



- Approved in December 2017
- published in January 2018
- Builds on non-statutory 2012 National Climate Change Adaptation Framework



Framework – Key Actions



- Context for key risks/vulnerabilities – Sectors/Regions/Local
- Roll out of Plans and Strategies – 12 sectors - Sept 2019
- Revised Governance and Reporting
- Increasing Awareness – Climate Dialogue (June 23rd)
- Mainstreaming Climate Adaptation
- **Guidelines & Operational Support**
- **Establishment of Climate Action Regional Offices**

Key Sectors Central Government



Theme	Sector Level	Lead Department for Sectoral Adaptation Plans
Natural and Cultural Capital	Seafood	Department of Agriculture, Food and the Marine
	Agriculture	
	Forestry	
	Biodiversity	Department of Culture, Heritage and the Gaeltacht
	Built and Archaeological Heritage	
Critical Infrastructure	Transport infrastructure	Department of Transport, Tourism and Sport
	Electricity and Gas Networks	Department of Communications, Climate Action and Environment
	Communications networks	
Water Resource and Flood Risk Management	Flood Risk Management	Office of Public Works
	Water Quality	Department of Housing, Planning and Local Government
	Water Services Infrastructure	
Public Health	Health	Department of Health

Sectoral Guidelines & Operational Support



Roinn Cumarsáide, Gníomhaithe ar son na hAeráide & Comhshaoil
Department of Communications, Climate Action & Environment

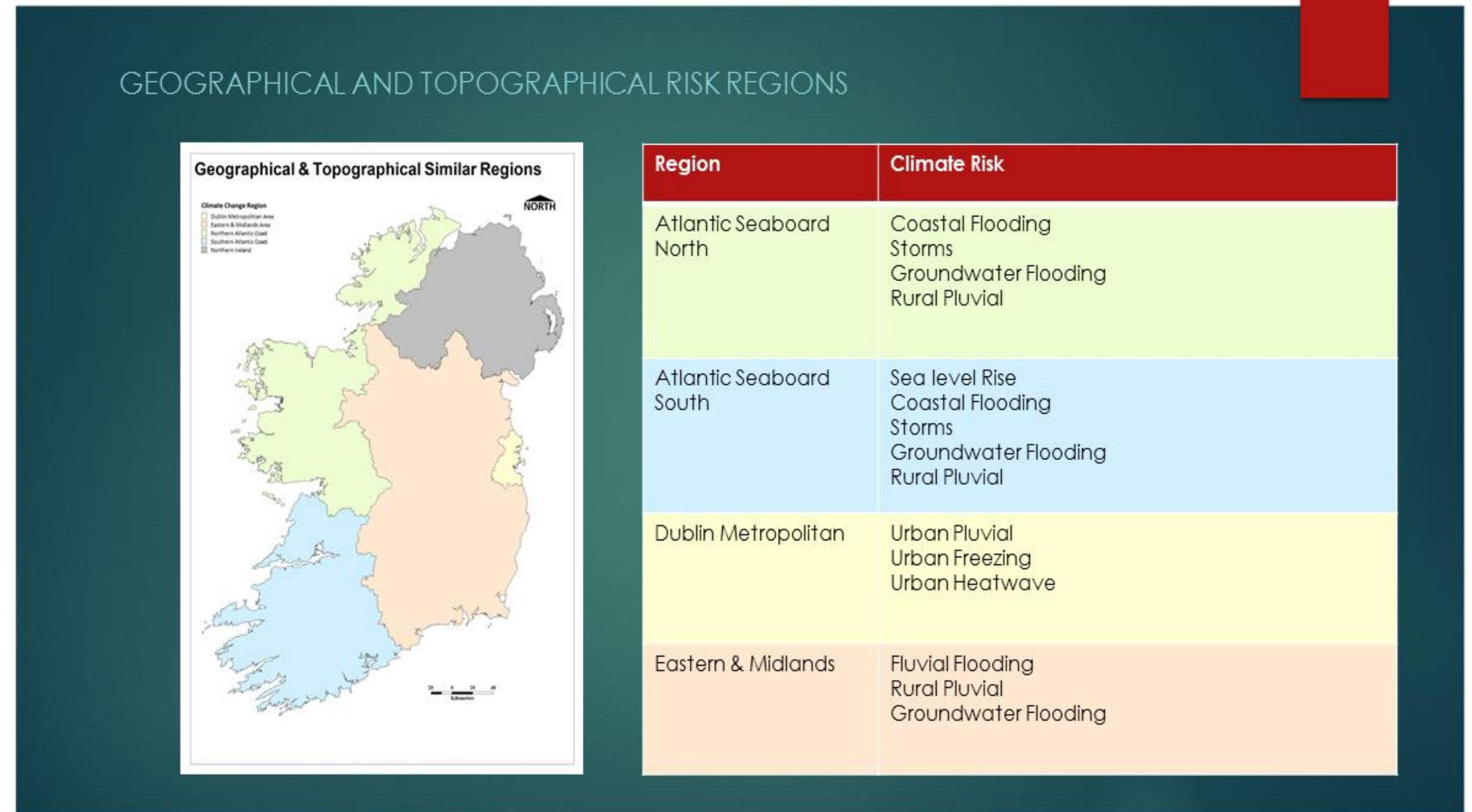
Sectoral Planning Guidelines for Climate Change Adaptation
May 2018

The screenshot shows the Climate Ireland website interface. At the top, there is a navigation bar with links for HOME, ABOUT ADAPTATION, TOOLS, RESOURCES, and CONTACT US. The main header features the EPA Research logo and the text 'ADAPTATION AT YOUR FINGERTIPS'. Below this, a welcome message states: 'Welcome to Climate Ireland, we provide information, advice and support to help Ireland adapt to our changing climate.' Three main navigation buttons are visible: 'Get Started', 'Information & Data', and 'Plan & Manage'. A large globe image serves as a background for the main content area. Below the globe, there are five featured sections: 'Climate Adaptation (What, Why and How)', 'Sectoral Knowledge Hub (Impacts, Opportunities, Adaptation)', 'News (OPW launches)', 'Ireland's Climate Status Tool (Discover Ireland's Changing Climate)', and 'Climate Information Viewer (Information to Help You Adapt)'. At the bottom, there is a grid of links categorized into: Climate Change, Climate Adaptation, Tools, Resources, and Getting Started. A sidebar on the right contains a 'Tweets by @ClimateIreland' section with a tweet from ERI (@eriucc) about driving from Cork to Galway in an electric vehicle.

A Regional Approach



- 31 Local Authorities
- Key Player!
- Regional Approach
- Climate Action Regional Offices - €10m – 5 years



A Regional Approach



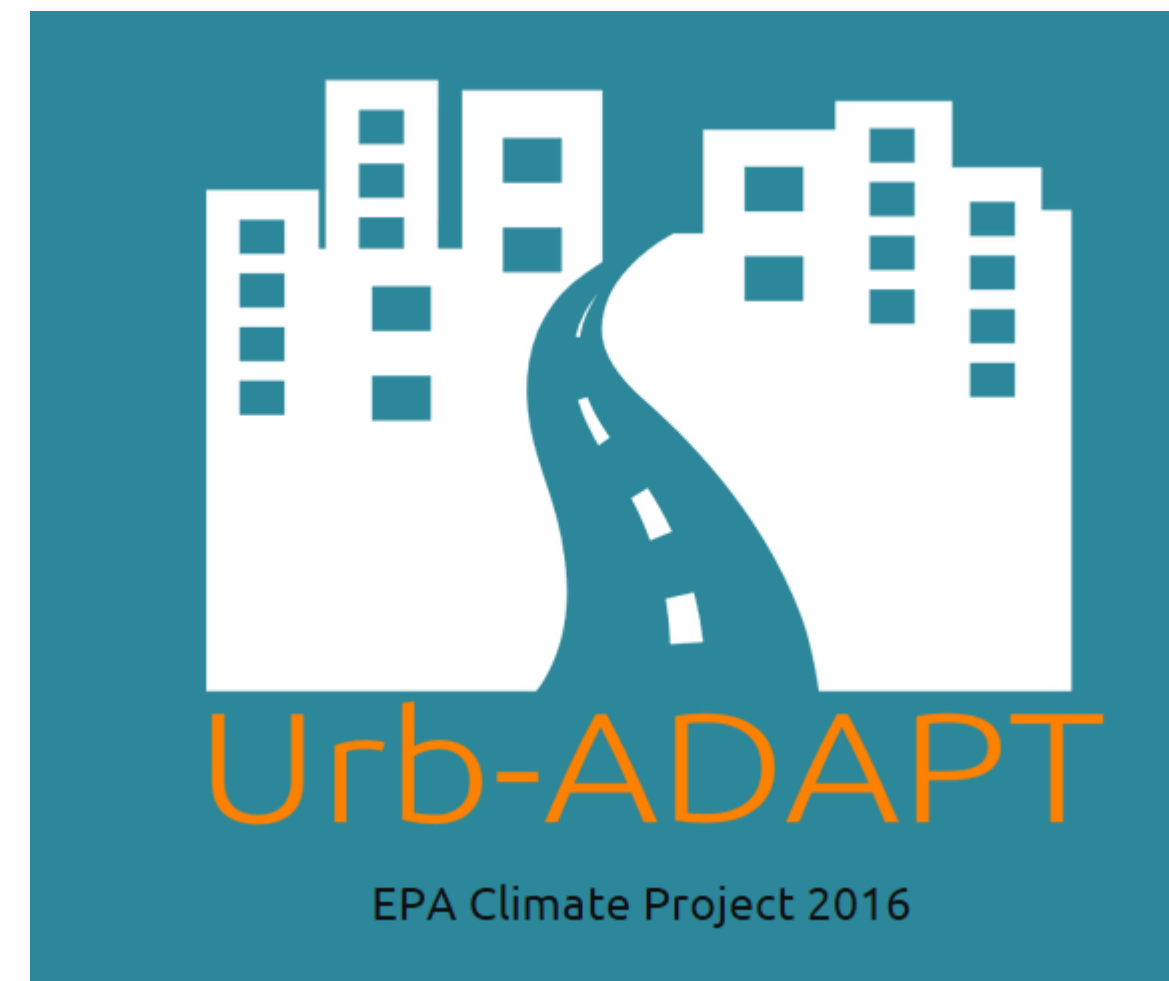
- Effective link with
 - New National Planning Framework
 - Central Government
 - Emergency Planning
 - Water/Waste Regional Offices
 - Enterprise and Local Development
 - Cross Border
 - Education and Awareness Initiatives
 - Research Community - EU INTERREG/LIFE
 - Covenant of Mayors

Overall Challenges



- Policy Coherence

- Low Carbon transition
- Cross sectoral coordination
- National Planning Framework
- National Development Plan
- Private Sector
- Emergency Planning
- Research



EPA - National Risk Assessment of Impacts of Climate Change



CIViC – Critical Infrastructure Vulnerability to Climate Change



Thank you

John.oneill@dccae.gov.ie