

EEAs assessments of the status of Europe's waters

Special session for non-WFD countries regarding ecological/-chemical status assessments and spatial data

Session 4

2016 Eionet NRC Freshwater Workshop

Peter Kristensen

Project manager Integrated Water Assessment,
European Environment Agency (EEA)



Aim of the sessions

The focus of this session is on the non-WFD countries that do not report WFD data and to ensure that results from these countries are presented in EEAs 2017 State of Water assessment and other water products.

- Introduction, Peter Kristensen, EEA
- Experience by non-WFD countries on ecological/chemical status assessment (tour de table)
- EEA needs for spatial data (RBD, water bodies) and reporting issues,
- Availability of spatial data by non-EU countries

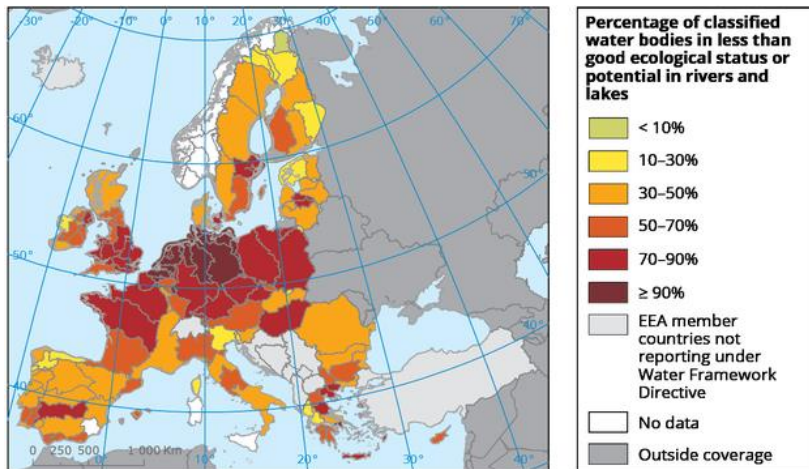


Coverage of EEA 2017 State of Water assessment

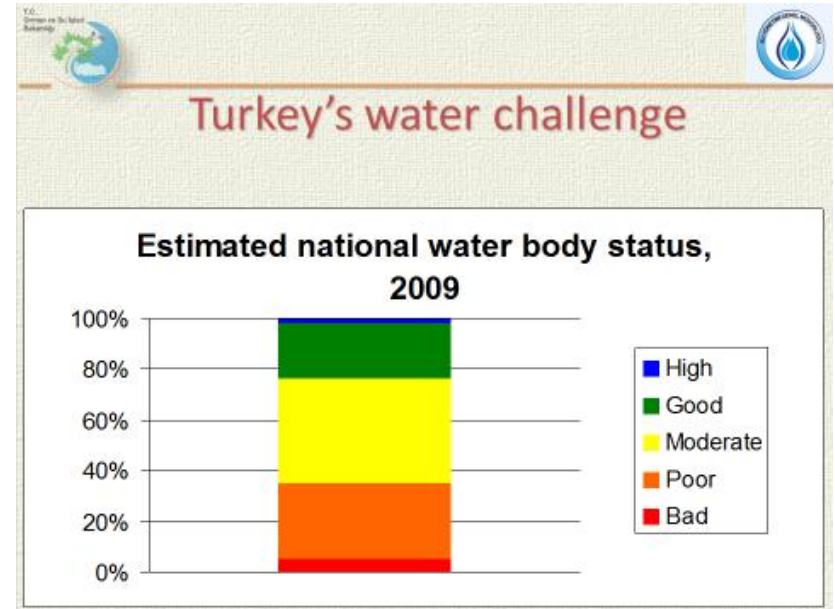
- River Basin Districts – integrated water resource planning
- Groundwater, rivers, lakes, transitional and coastal waters
- Status of waters
 - Ecological status of surface waters
 - Chemical status of groundwater and surface waters
 - Quantitative status of groundwater
- Pressures affecting waters
 - Water abstraction
 - Point and diffuse pollution
 - Hydromorphology



Ecological status

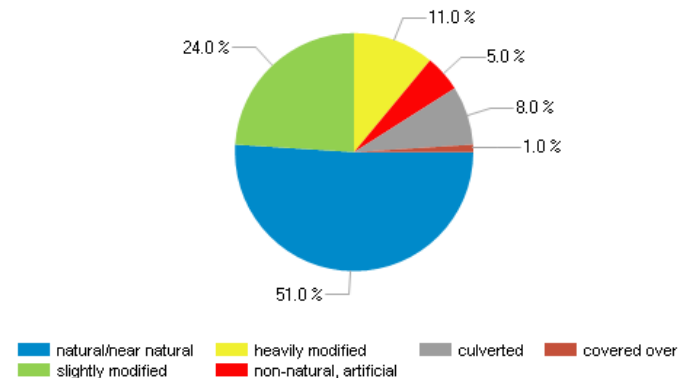


How to ensure that results on status and pressures from the non-WFD countries are included in the next State of Water assessment?



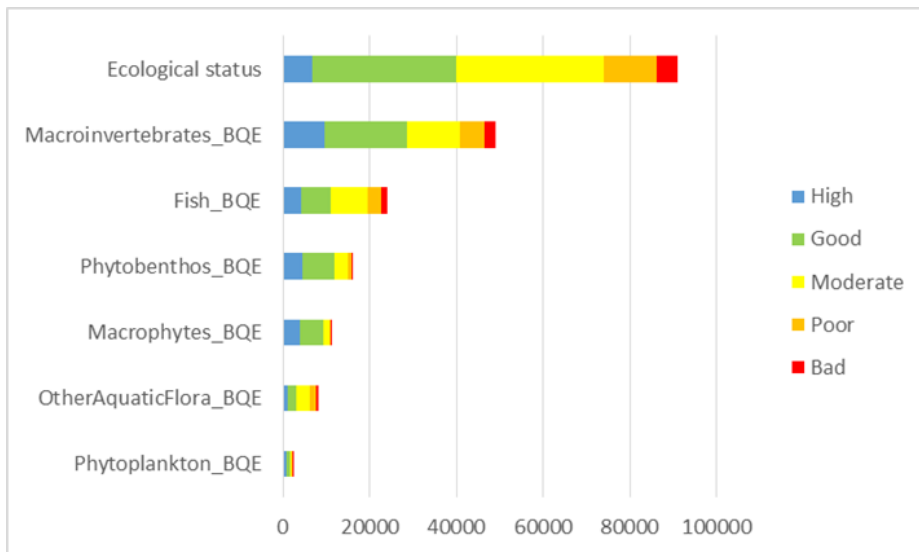
Source: Bahim (?) Basin management in Turkey [Link](#)

CH Core Indicator Structure of watercourses



Source: FOEN [Link](#)

Biological status



Biological quality elements – West Balkan countries

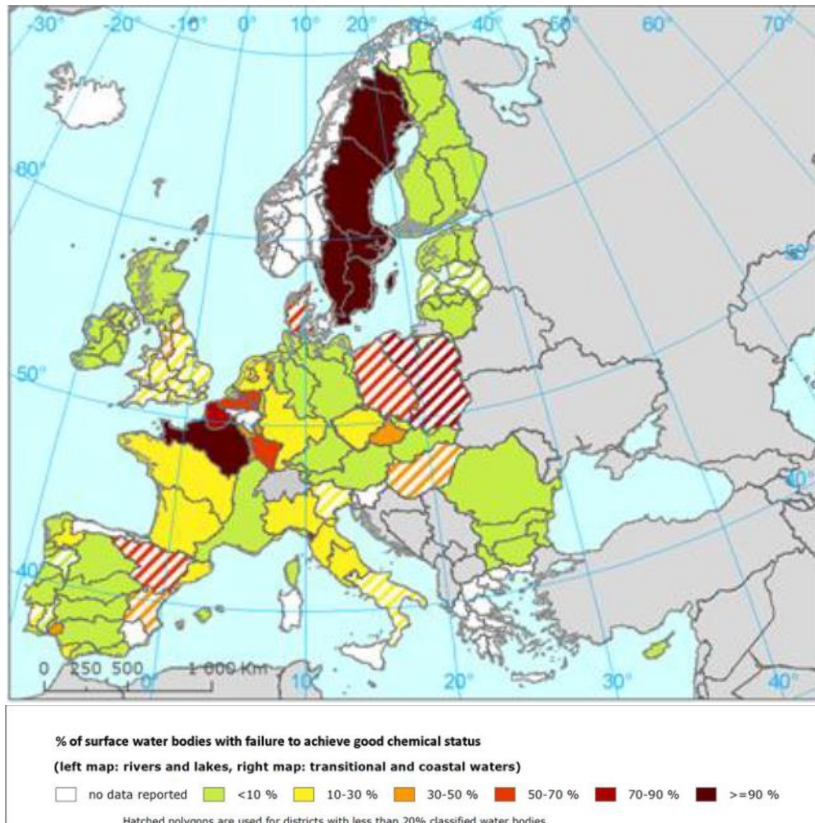
Conclusions on the availability of SoE biological data in West Balkan countries:

Country	Data available now?	When can data become available for reporting?	What data can become available for reporting?
Albania	No	Not sure, only project-data are available now from the Erzen river project and the Skodro lake project	
Croatia	No	End of 2012	All BQEs that are included in the data request
The Former Republic of Macedonia	No	In 2-3 years	Macroinvertebrates Phytobenthos Phytoplankton <i>For lake Ohrid:</i> Phytoplankton Macrophytes Macroinvertebrates Physico-chemical data
Montenegro	No	In 2 years	Macroinvertebrates Phytobenthos
Republic of Serbia	No	In 2-3 years	Macroinvertebrates Phytobenthos
Kosovo (under UNSCR 1244)	No	Not sure, only projects now	Not sure

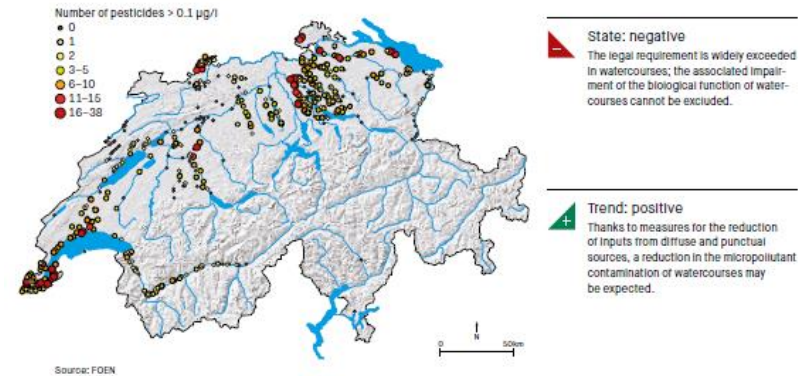
Source: 2011 ETC/ICM report on support to West Balkan countries on WISE water reporting

Chemical status

Chemical status of rivers and lakes



MII.11.1 Micropollutants in surface water bodies based on pesticides, 2013

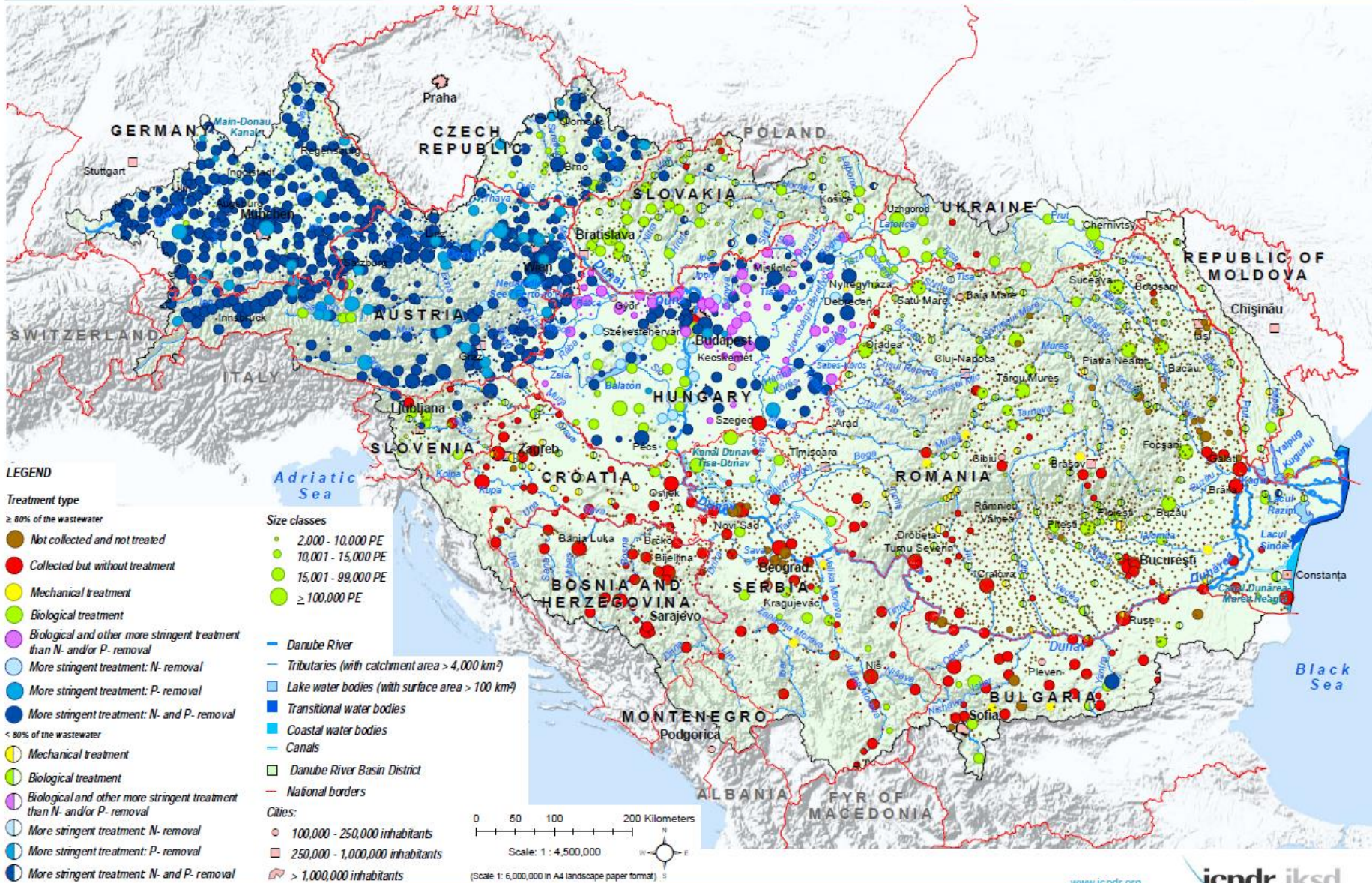


Source: FOEN 2015 Environmental report 2015, [Link](#)

Blue high degree of waste water treatment

Red wastewater discharged without treatment

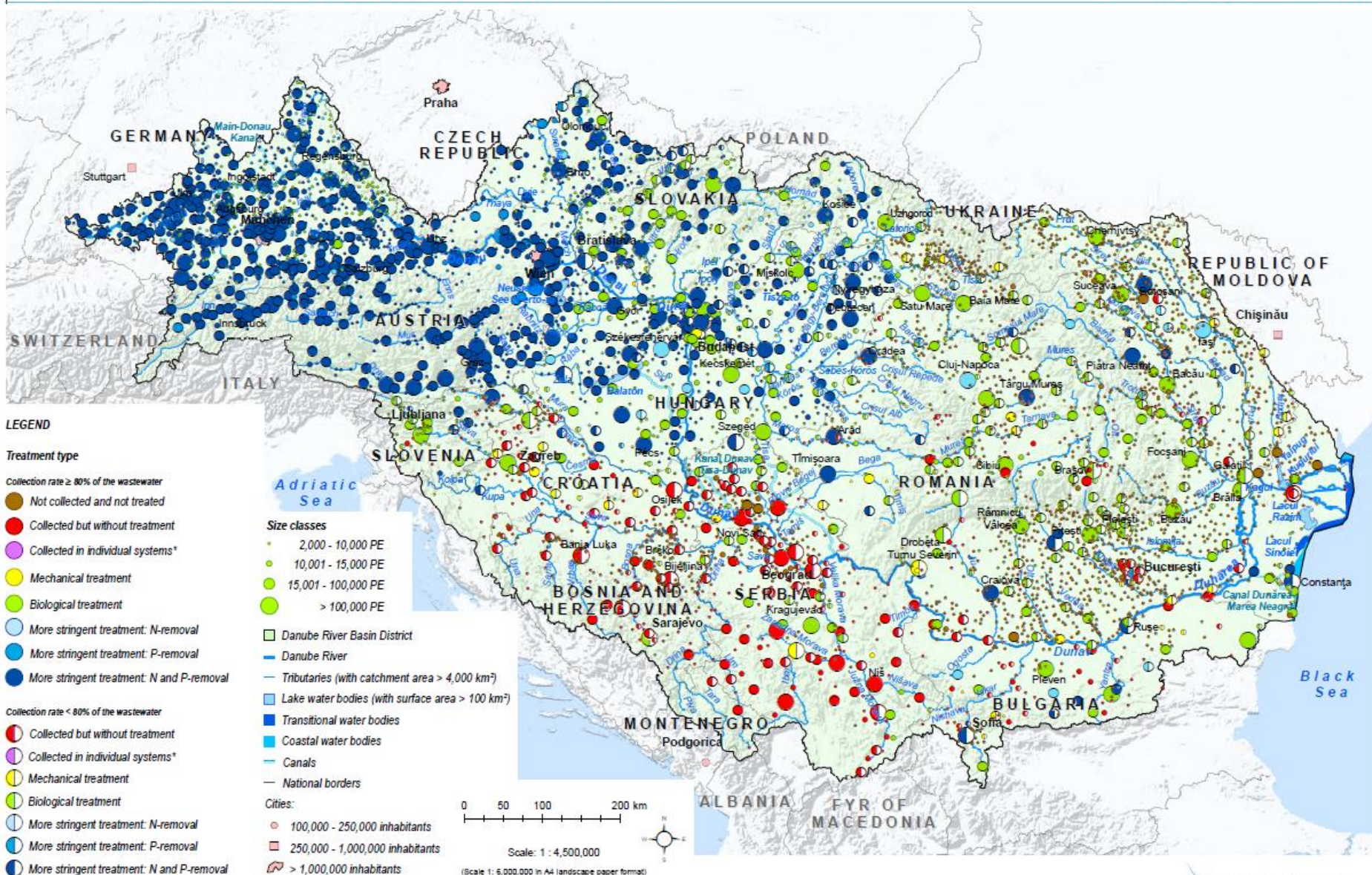
Danube River Basin District:
Urban Wastewater Discharges – Reference Situation - UWWT 2005/2006



Blue high degree of waste water treatment Red wastewater discharged without treatment

Urban Wastewater Treatment – Reference Situation 2011/2012

DRBM Plan - Update 2015 - MAP 5



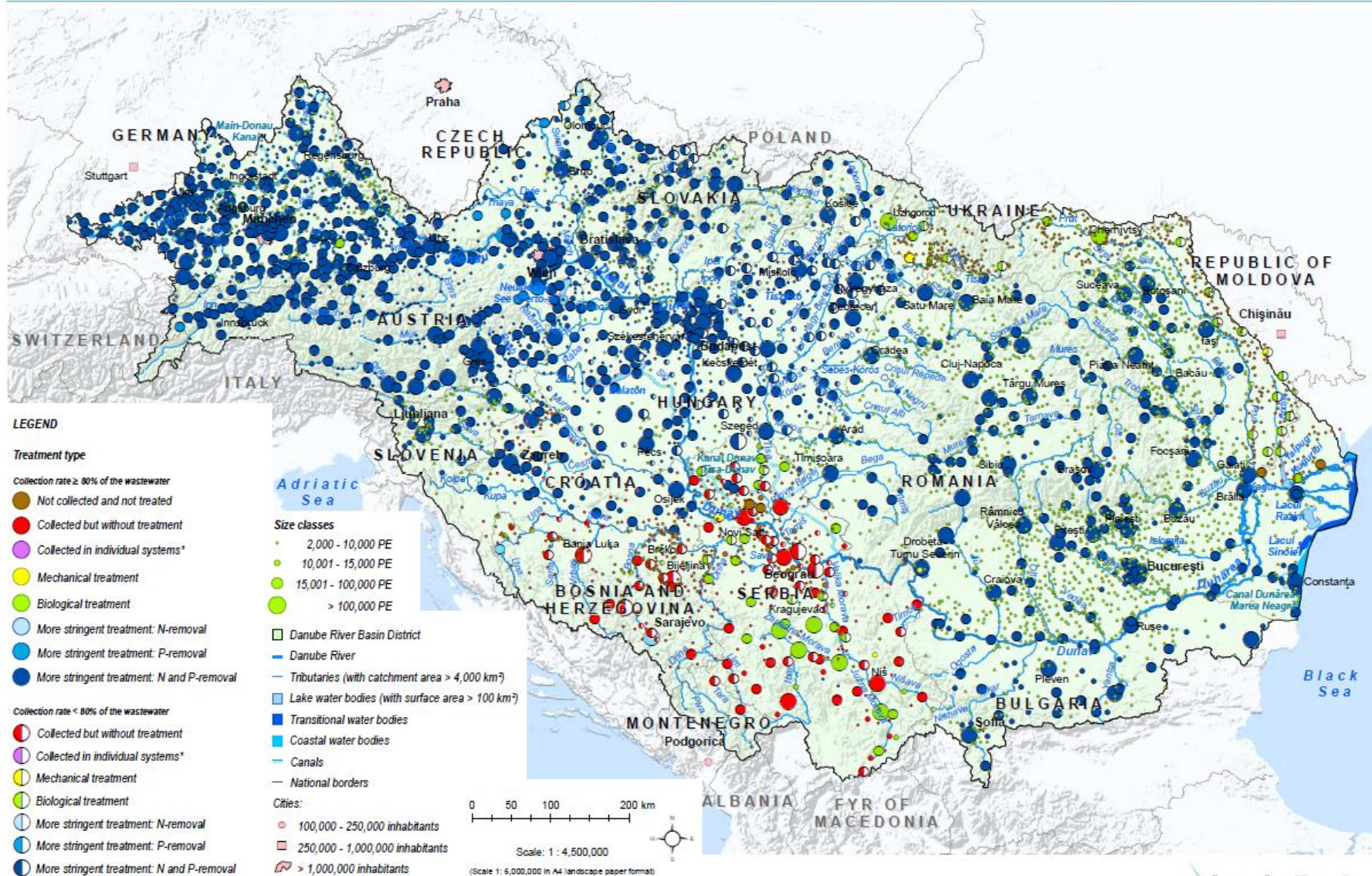
* Individual or other Appropriate Systems

This ICPRD product is based on national information provided by the Contracting Parties to the ICPRD (AT, BA, BG, CZ, DE, HR, HU, ME, MD, RO, RS, SI, SK, UA) and CH. EuroGlobalMap data from EuroGeographics was used for all national borders except for AL, BA, ME where the data from the ESRI World Countries was used; Shuttle Radar Topography Mission (SRTM) from USGS Seamless Data Distribution System was used as elevation data layer; data from the European Commission (Joint Research Center) was used for the outer border of the DRBD of AL, IT, ME and FL.

Danube iRBD – UWWWT baseline scenario 2021

Status of Urban Wastewater Treatment – Baseline Scenario 2021

DRBM Plan - Update 2015 - MAP 28



* Individual or other Appropriate Systems

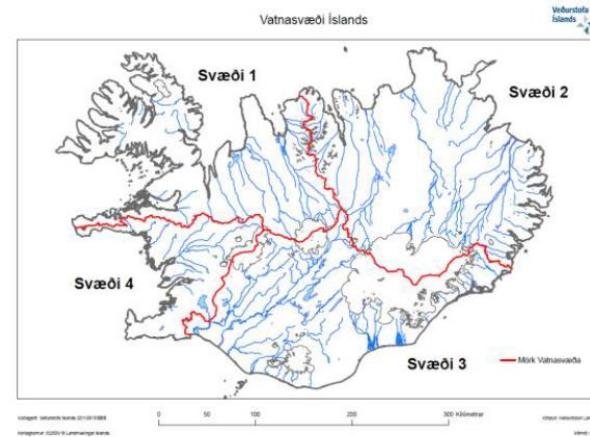
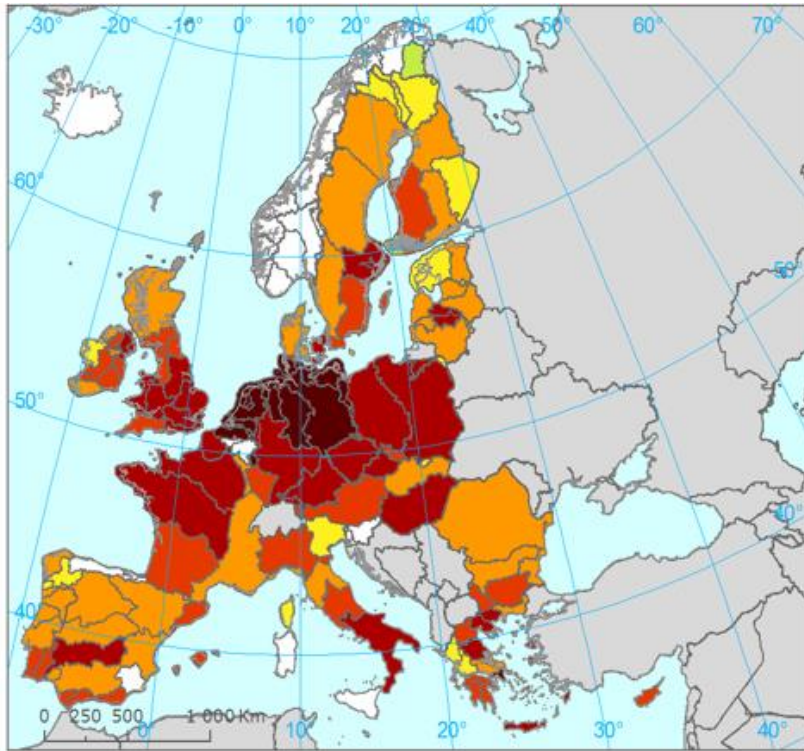
This ICPRD product is based on national information provided by the Contracting Parties to the ICPRD (AT, BA, BG, CZ, DE, HR, HU, ME, MD, RO, RS, SI, SK, UA) and CH. EuroGlobeMap data from EuroGeographics was used for all national borders except for AL, BA, ME where the data from the ESRI World Countries was used; Shuttle Radar Topography Mission (SRTM) from USGS Seamless Data Distribution System was used as elevation data layer; data from the European Commission (Joint Research Center) was used for the outer border of the DRBD of AL, IT, ME and PL.

Vienna, December 2015

www.icpdr.org

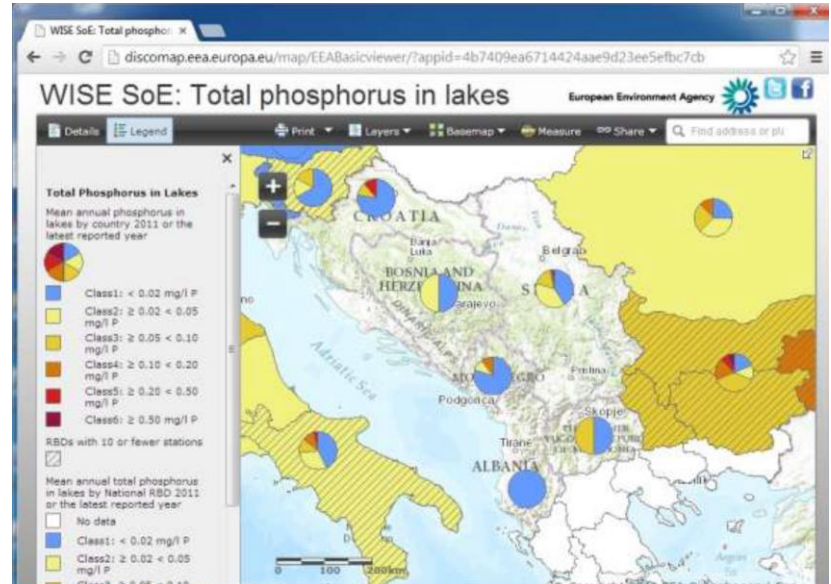
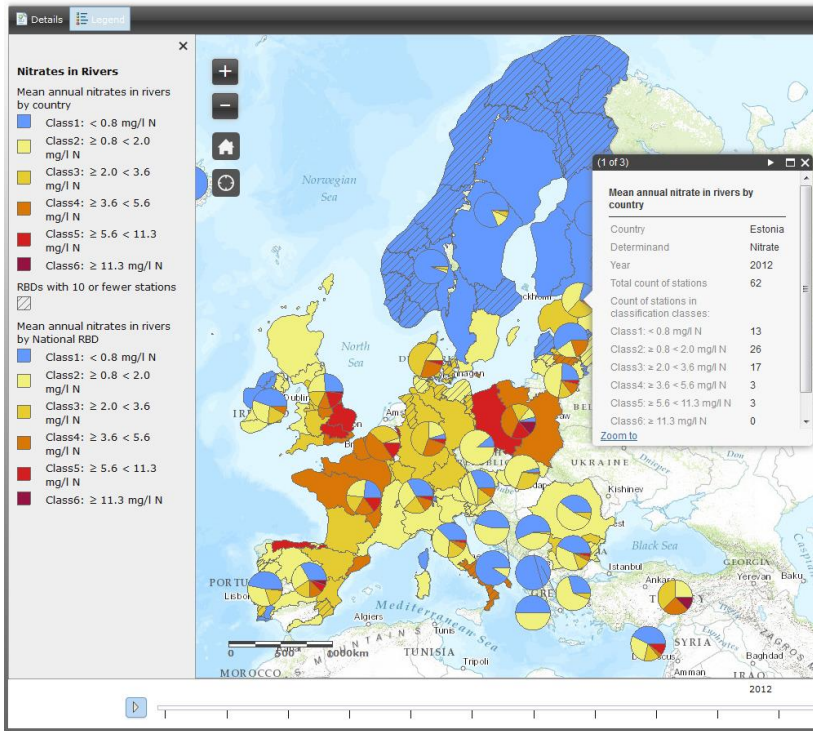
icpdr iksd
International Commission for the Protection of the Danube River

River Basin Districts



Non-WFD countries on other EEA products

WISE SoE: Nitrates in rivers



Questions to non-WFD countries

- Do you have activities on **biological, ecological assessment, physico-chemical of state of water**?
- If yes, which water categories are covered, and can the results of these assessment be **compared with the WFD results on ecological status**?
- Do you have assessment of the **chemical status, or water quality related to hazardous substances**?
- If yes, which water categories (e.g. groundwater, rivers etc.) are covered and which substance groups are monitored, and can the results of these assessment be compared with the WFD results on chemical status?
- Do you have an **inventory of the pollutant pressures** (e.g. urban waste water discharges or diffuse pollution from agriculture) and
- **Inventories of hydromorphological pressures** (e.g. number of barriers/obstacles in rivers)?
- **Your opinion and suggestions** on how to include results from the non-WFD countries are very welcomed.