

Objectives and introduction

Beate Werner

Eionet WS 2014

26./27.June



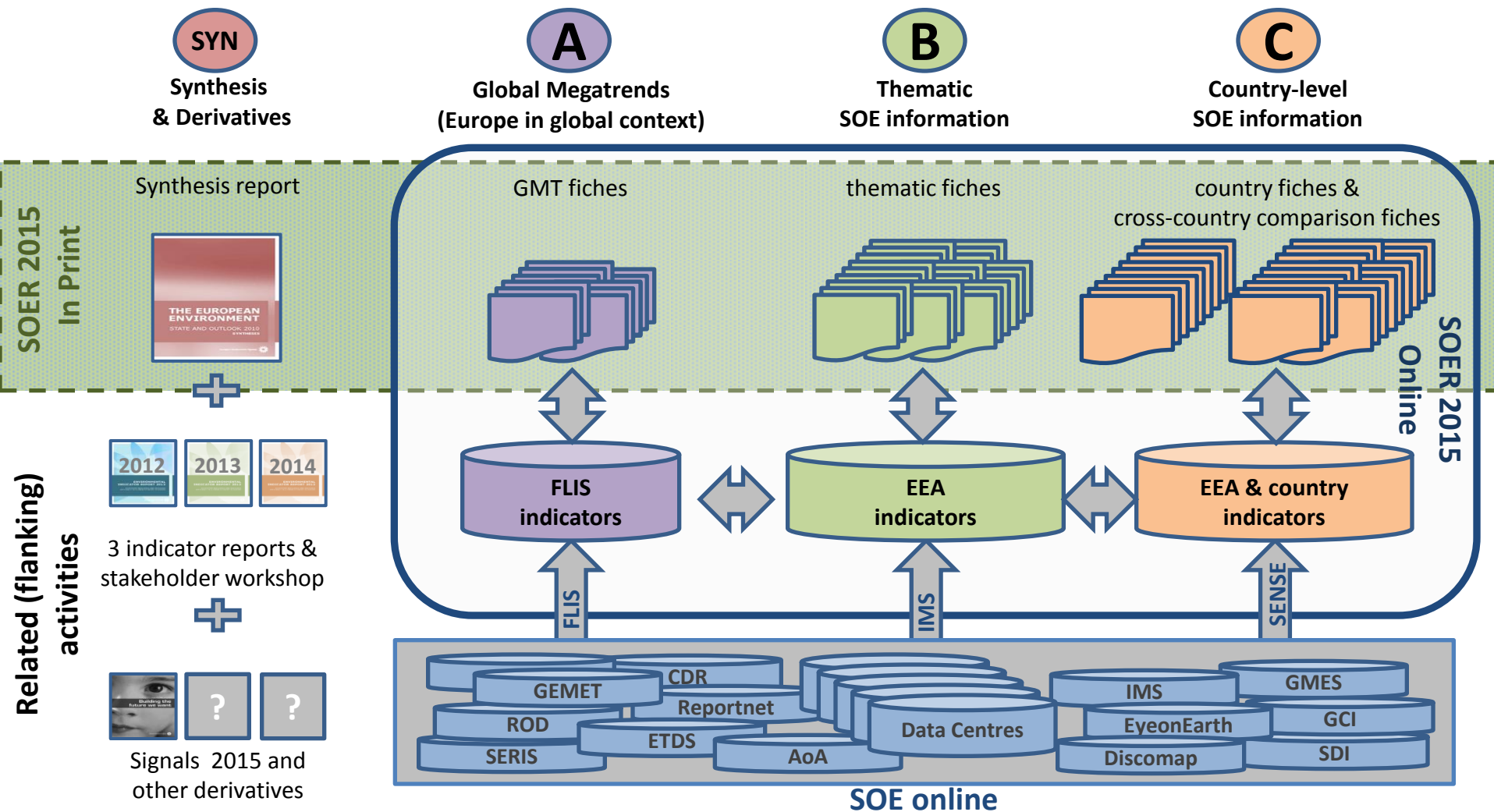
Objectives and introduction

- Use of SoE information in the SOER 2015
- Changes in business process, data handling and QA/QC of SoE data flows
- Water data flows converging across Water directives and WISE-SoE
- Communication
EEA / NRCs / Directives - new NRC structure



SOER 2015

A suite of product(s): short briefs + up-to-date indicators



SOER 2015

Part B – 25 four-page thematic fiches



Environmental themes cluster	Socio-economic dimensions cluster	Systemic perspectives cluster
Air (*)	Agriculture (*)	Green economy
Biodiversity (*)	Consumption	Natural capital and ecosystem services
Climate change adaptation, impacts and vulnerability	Energy (*)	Land System
Forests	Industry	Hydrological systems
Freshwater (*)	Maritime activities	The air and climate system
Soil	Tourism	Urban systems
Marine and coastal environment	Transport (*)	
Mitigating climate change (*)	Health and the environment	
Noise	Resource efficiency (*)	
Waste (*)		

Note: () indicates that topic corresponds to a topic for cross-country comparison fiche (Part C).*

SOER 2015

Part B – Thematic fiches



- **Focus:** A series of brief summaries of state and trend in key environmental themes, guide through EEA knowledge base.
- **Progress:** First draft of 25 thematic fiches by end of March; feedback from 25 countries, Commission Services, Scientific Com.
- **Next steps:** Second (internal) draft fiches to be developed by Jul 2014; final draft fiches to be developed by Oct/Nov 2014.
- **Next for Eionet:** Factual check of final draft fiches Oct/Nov 2014.



Topics	Indicators
Air	CSI 'Emissions of main air pollutants'
Agriculture	Eurostat indicator on 'Area under organic farming'
Biodiversity	CSI008 'Designated areas'
Freshwater	CSI020 'Nutrients in Freshwater'
Mitigating climate change	CSI 'EU and national total GHG emission trends and projections'
Waste	CSI016 'Municipal waste generation'
Energy	CSI029 'Primary energy consumption by fuel'
Transport	CSI035 'Passenger transport demand'
Resource efficiency	Eurostat indicator on 'Resource productivity (GDP/DMC)'



- **Focus:** EEA indicator-based cross-country comparisons for 9 themes, linked to national level indicator + Summaries of national state of environment reports
- **Progress:** First draft of 9 cross-country comparisons end of March; feedback from 25 countries and Commission Services. First draft SOER country fiches available - EEA feedback to each SOER - country fiche done in Jun 2014.
- **Next steps:** Second draft country comparison to be developed by Jul/Aug 2014; final draft fiches to be developed by Oct/Nov 2014.
- **Next for Eionet:** Add country perspectives to second draft comparisons - factual check of final draft cross country comparison Oct/Nov 2014. Prepare second draft SOER country fiches by end of Jul 2014. In August, EEA will offer editorial support to authors; final drafts needed by Oct 2014.



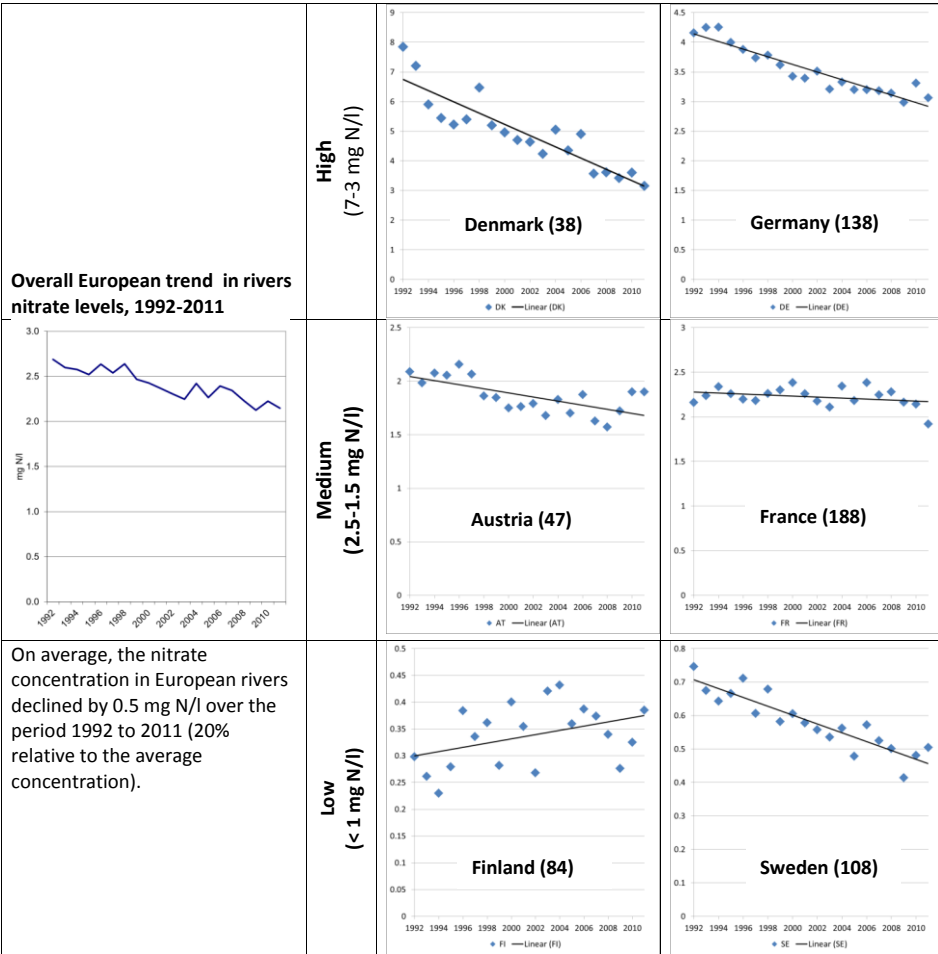
Eionet water data flow – A SUCCESS

- The current Waterbase contains a vast amount of water quality information covering more than 15000 river stations in 38 countries, 4200 lake stations in 36 countries, and around 24 200 groundwater stations in 36 countries.
- For rivers EEA has around 1000-1700 time series (dependent on the pollutant) covering the last 21 years 1992 to 2012 (and some longer time series and many shorter time series).
- Voluntarily reported by Member Countries the data into the WISE SoE data bases (water bases) are the basis for EEAs water quality indicators and the WISE interactive maps to provide European overviews.



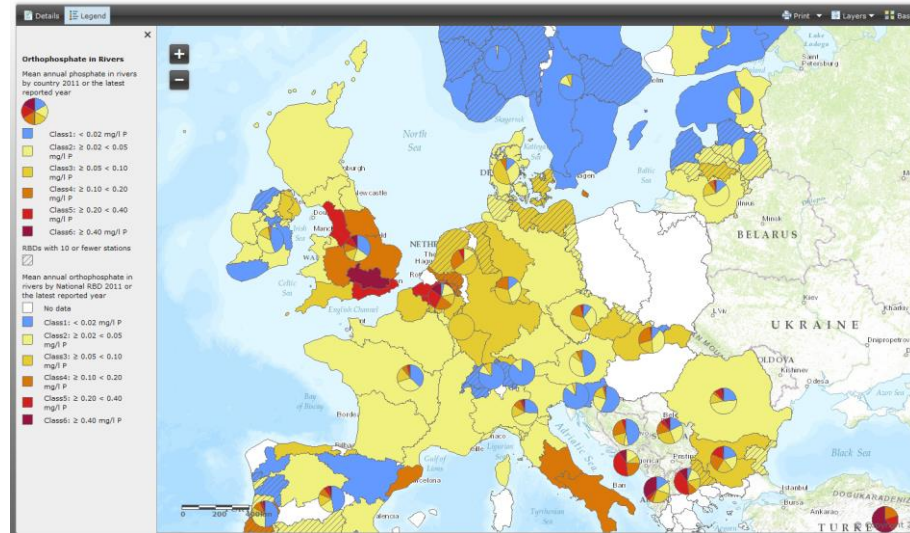
Examples of use of information

Trend in river nitrate concentration 1992-2011



Note: Based on river stations with consistent time series over the per 1992-2011 (gaps are filled by extrapolations) – (number of river stations)

WISE SoE: Orthophosphate in rivers



How to illustrate country comparison?

Figure X3 Change in river nitrate concentration comparing average concentration 1992-1995 to 2008-2011

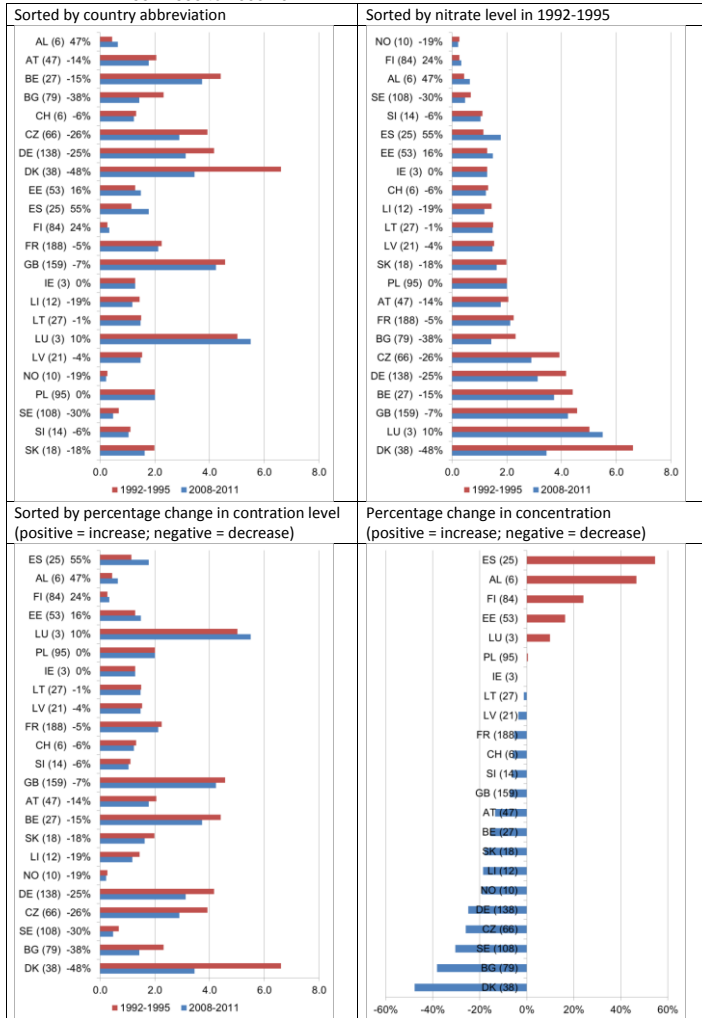
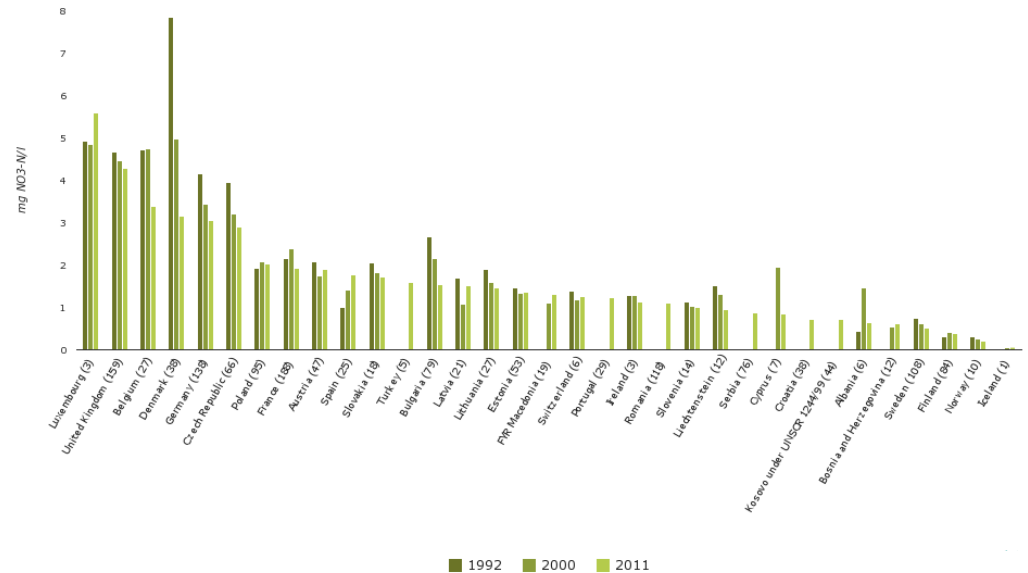
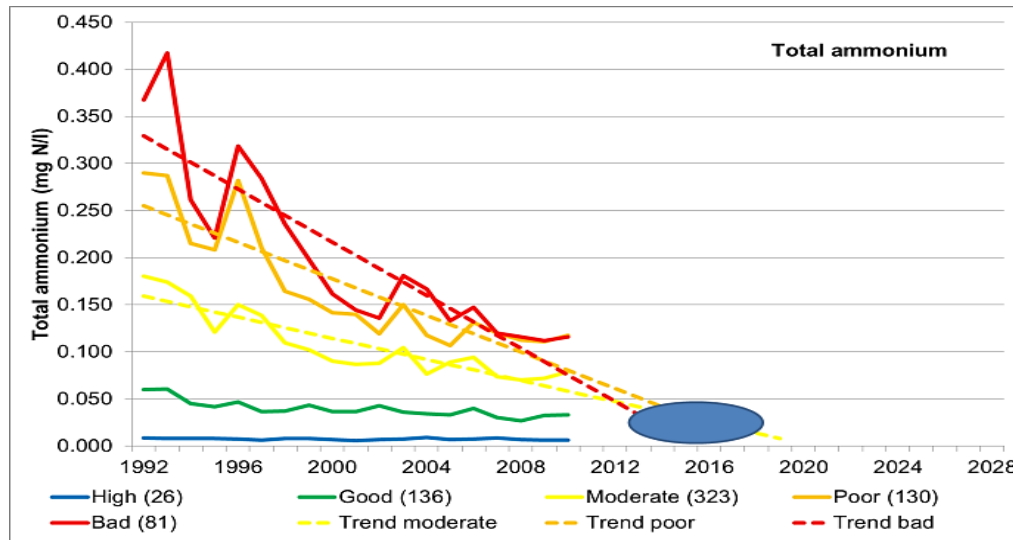


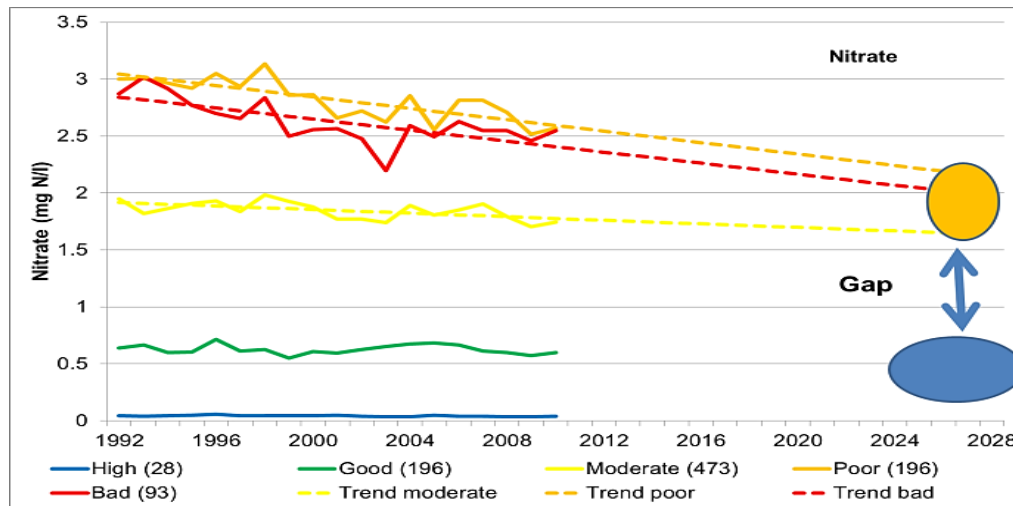
Chart – Average concentration of nitrate in European rivers



Pollution reduction from diffuse sources



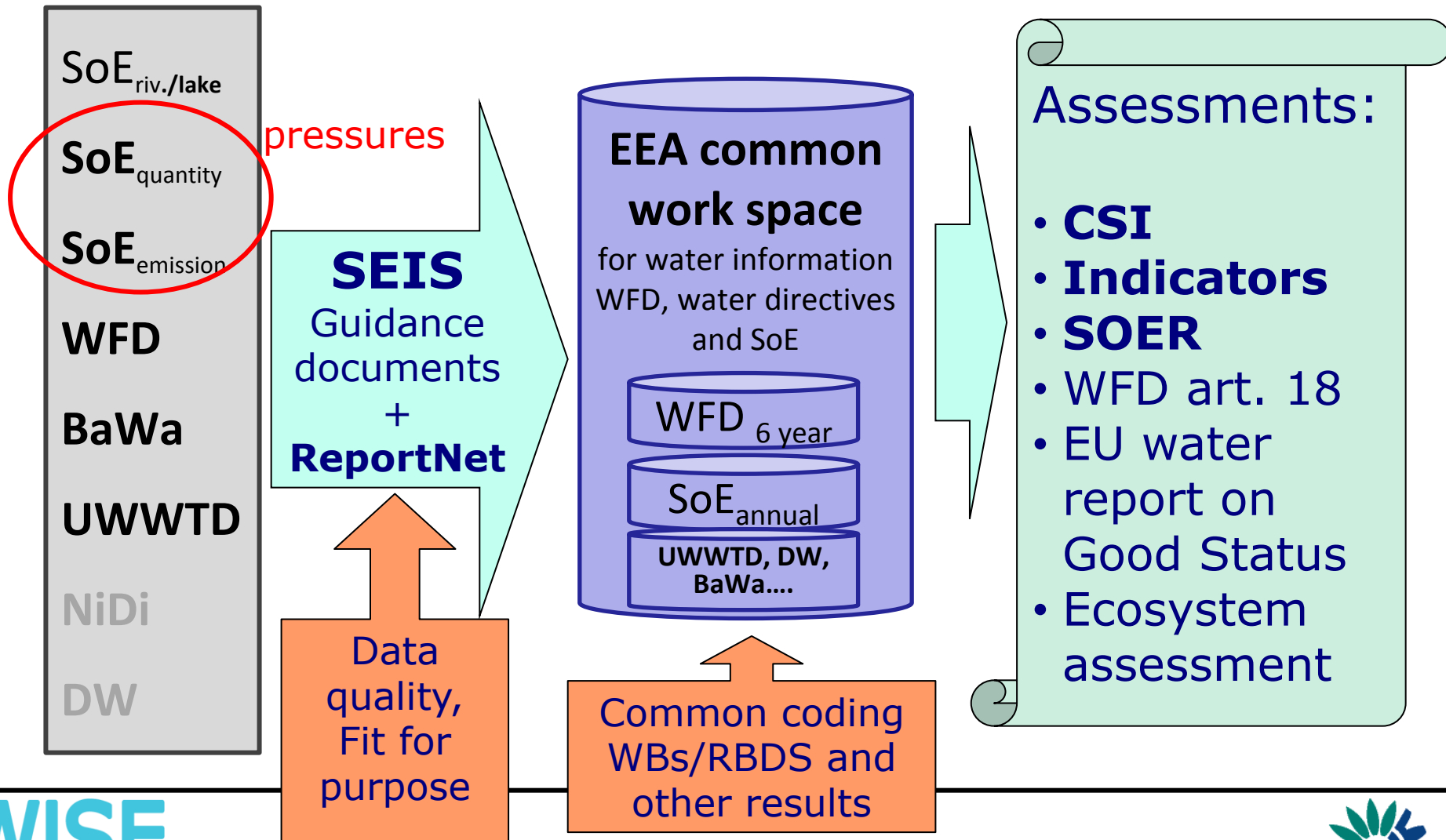
total
ammonium



nitrate



Thematic reporting and Water data flow



SOE data flow - History and time line

- **2007/2008** SoE reporting guidance changed to align information with 1st round WFD reporting guidance for the 2010 exercise
- **In 2011/2012** assessment attempt to use SoE information in context of WFD reported information on status and widely failed due to missing relation of EIONET stations to WFD WBs
- **2014 Eionet workshop**
 - adjusting SoE guidance to align SoE structure and coding with WFD enabling meaningful assessments
 - data quality assurance and discussions on a revised data processing and feedback system
- **2015** Eionet reporting to be better streamlined with WFD



What the SoE in the WFD guidance is **NOT**

- An attempt to make SoE information a mandatory requirements under the WFD
- An attempt to use WFD information to complement SoE information – this would lead to loss of SoE details

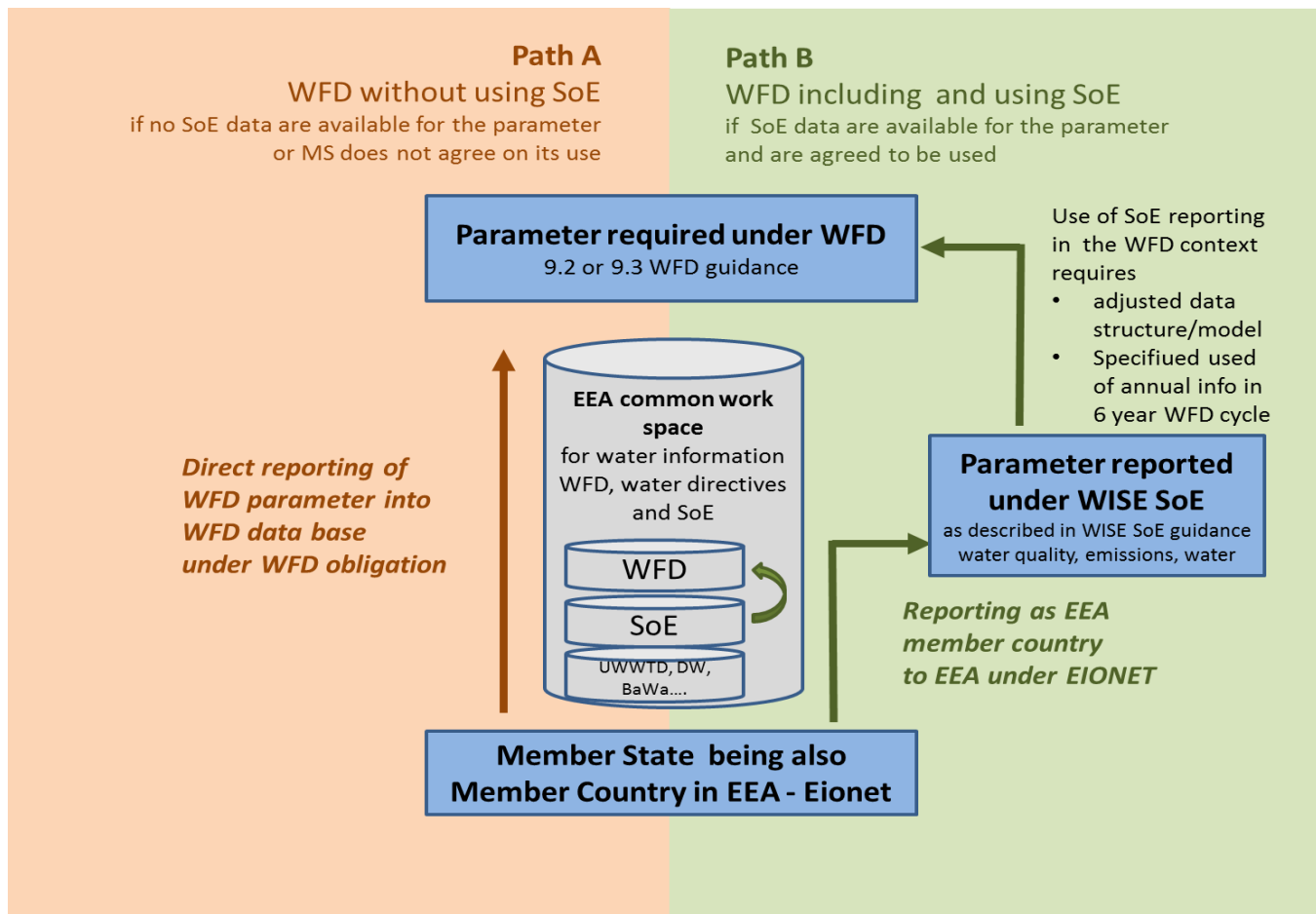
What the SoE in the WFD guidance **really is**

- An attempt to reduce reporting burden and use synergies
- An attempt to align SoE information with the WFD structure to improve later integrated assessments of EU status assessments
- SoE have more detail (annually instead of every 6 years, concentrations instead of good status aggregates)

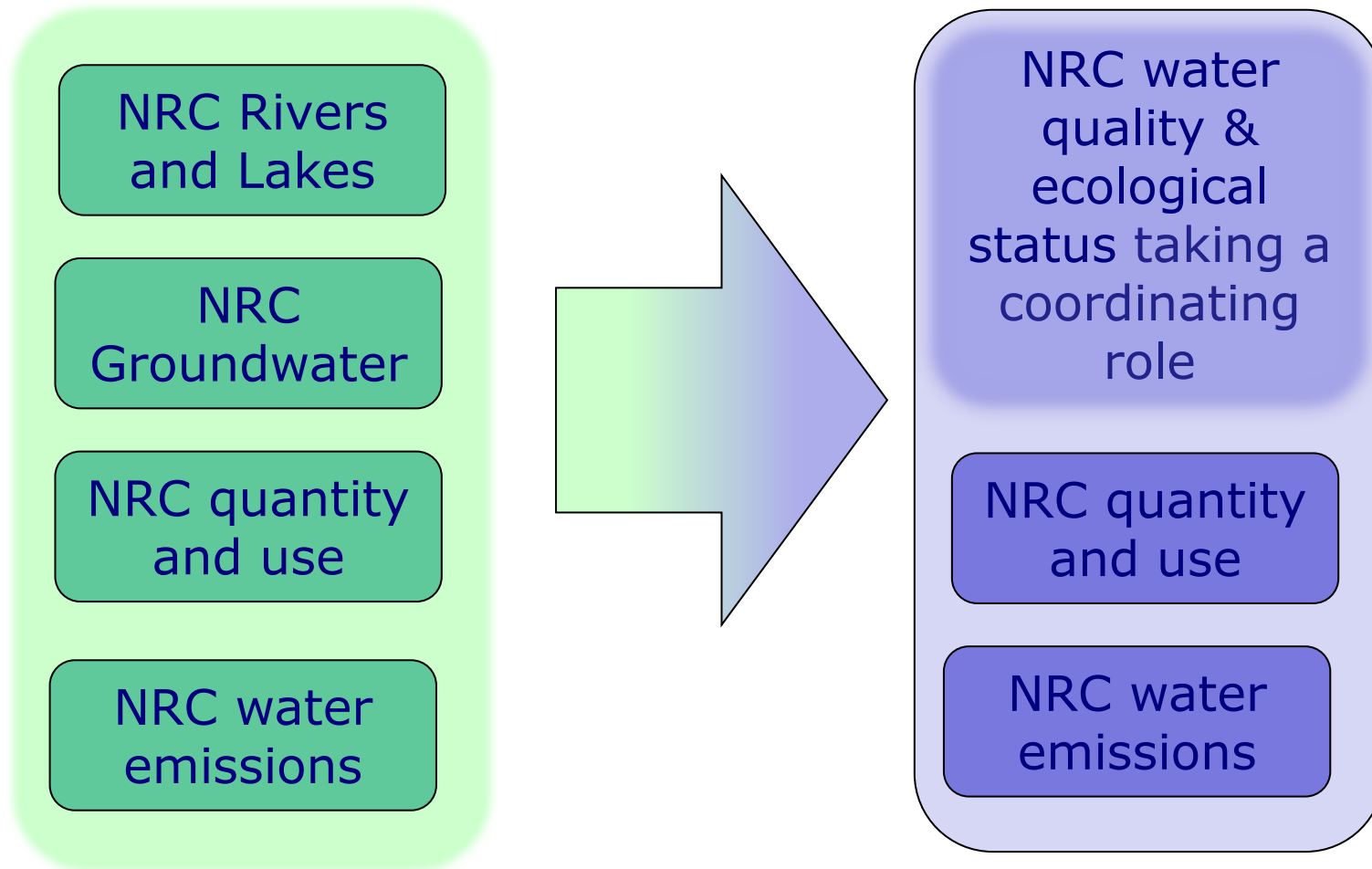


WFD using possible SoE information

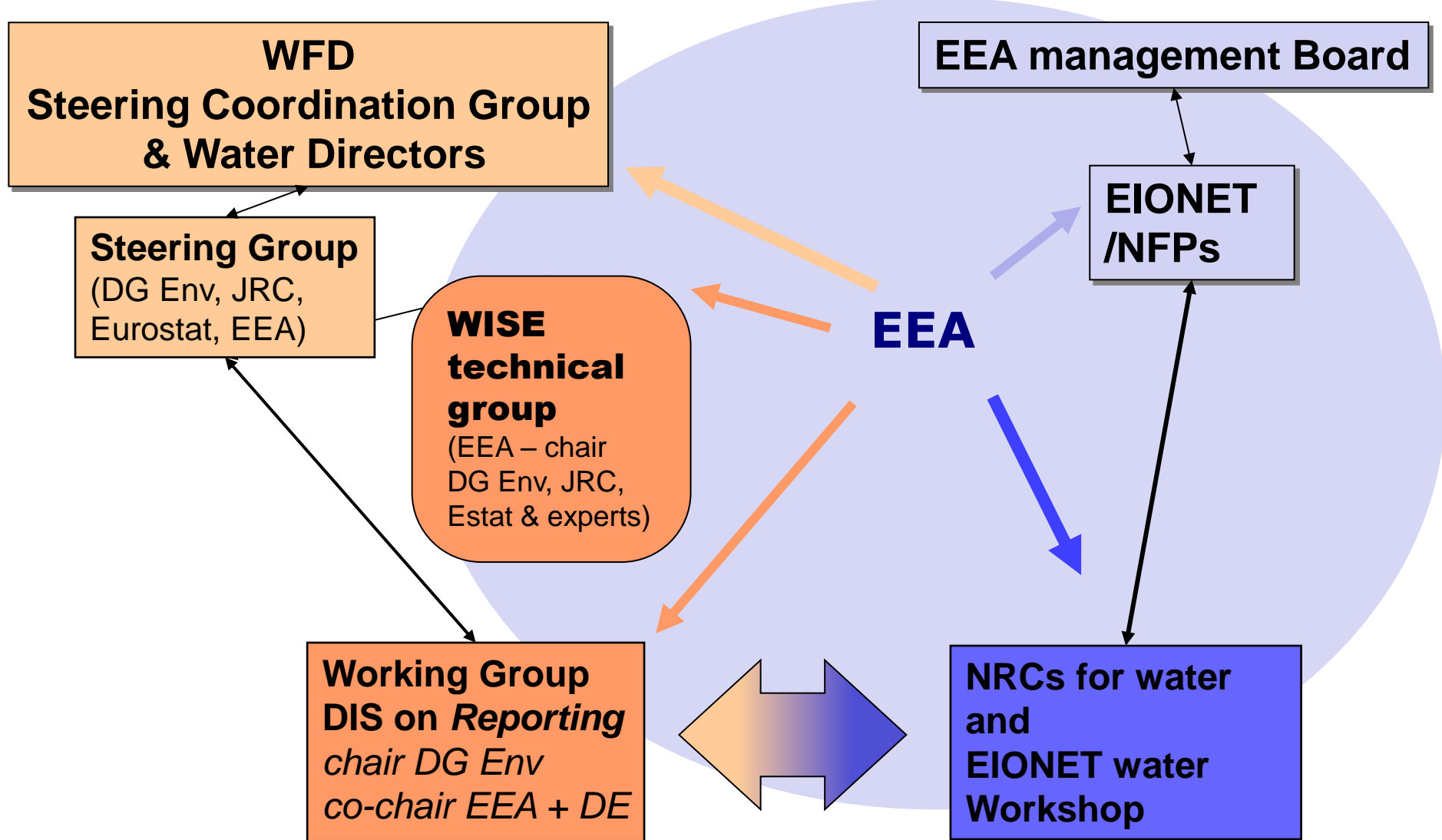
Water Directors to discuss 5/6 June



EIONET review and NRC structure new NRCs water - nominated?



EEA and WFD communities



→ WISE SOE Revision and upgrade towards WISE 2.0

- **Content Review** of whole WISE SOE data flows against upcoming 2nd round reporting under the WFD
 - **Technical Review of QA/QC** of data flows - more efficient processes between EEA and Member Countries needed
 - Technical and content review *needs resources and time*
- Proposal to be discussed with NRCs (background document)
- Finalisation of 2013 reporting cycle (used for CSI-14 and in SOER-15)
 - Core set indicator updates 2014 for SOER 2015 in old scheme (preparation ongoing review in September)
 - Focus with NRCs in 2014/15 on QA/QC and consistency with WFD data or reference to WFD stations or pressure information
 - Report 2014 and 2015 data together only in 2015 with a re-set technical system for QA/QC and feedback processes



Objectives and focus of this workshop

- Discuss, understand, and agree on the **content needs** for the development of the SoE data flow
- Discuss, understand and agree on the **technical needs** and implications for new ways of data handling in WISE 2.0
- Discuss, understand and agree on the best way for **clean up and quality check** of the 21 years of reported data
- We need not more stations and parameter, but a **better interpretation** of what we have by having stable, data sets, with the best possible **continuous time lines and high quality**

