

Visualisation of spatial and tabular data of the Water Directives and the SoE data in WISE

Agnieszka Romanowicz



Background

- WISE → project started in 2003
- SEIS, Inspire Directive
- WFD → first reporting round was finalized
- Technological changes



WISE: what is behind?

- Reporting:
 - Obligation: regulatory or voluntary
 - Description on what and how to report (e.g. DD, templates)
 - ReportNet as reporting tool
- Analysis of reported data
- Dissemination of European data as:
 - Data bases, maps, indicators and graphs
 - Interactive viewers
 - Reports (Communications, EEA Reports etc.)
- Website(s)



From reporting to visualization, How does it look like?

- Reporting:
 - Most of the reporting follows the same process, except of WFD were no DD is made and the reporting is very complex → having the same structure (DD) and QA/QC procedures will help in processing information and data
 - ReportNet as reporting tool, however:
 - maybe in next years specific tools for GIS data might be used (ArcGIS online, SDI links)
- Dissemination of European data as:
 - Interactive viewers → we want to move towards one viewer as a tool where more integrated analysis can be done
 - Datasets, maps in other formats on the EEA website
 - Reports (Communications, EEA Reports etc.)



Update of WISE and its visualisation part

- currently when possible all new data sets are prepared for visualisation in ArcGIS online

Advantages of this change:

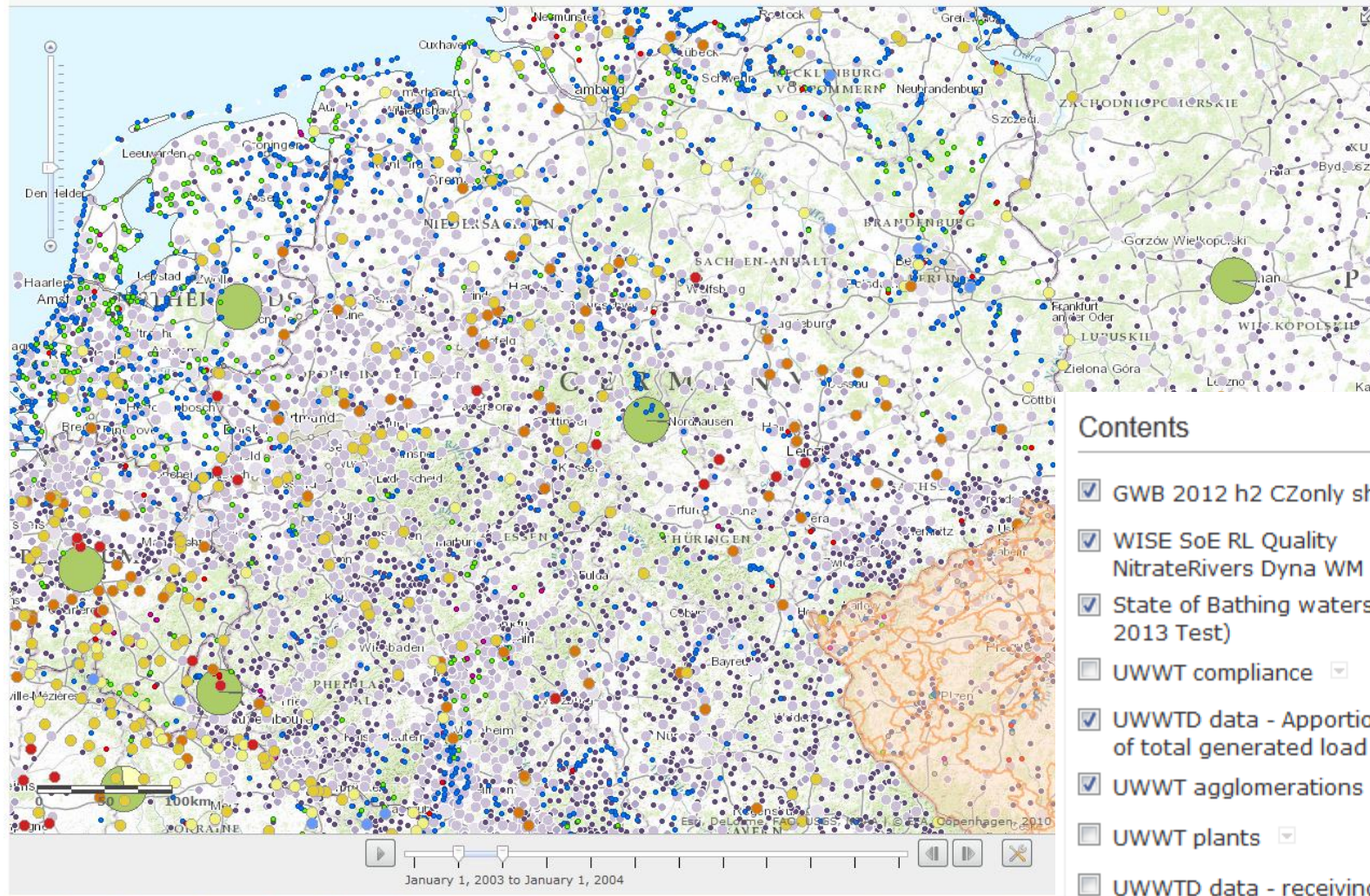
- Inclusion of all data with 'time line' → this will allow looking at all the DB at specific time (none of the data is prepared in this way)
- Various datasets (e.g. N2K) can be also use for analysis
- Possibility for experts and scientists to visualise all EEA hosted datasets for immediate analysis → no need to download all data
- EEA Website will have specific thematic viewers made from ArcGIS online



HOME | BWD & UWWTD data + shapefile

NEW MAP | Agnieszka

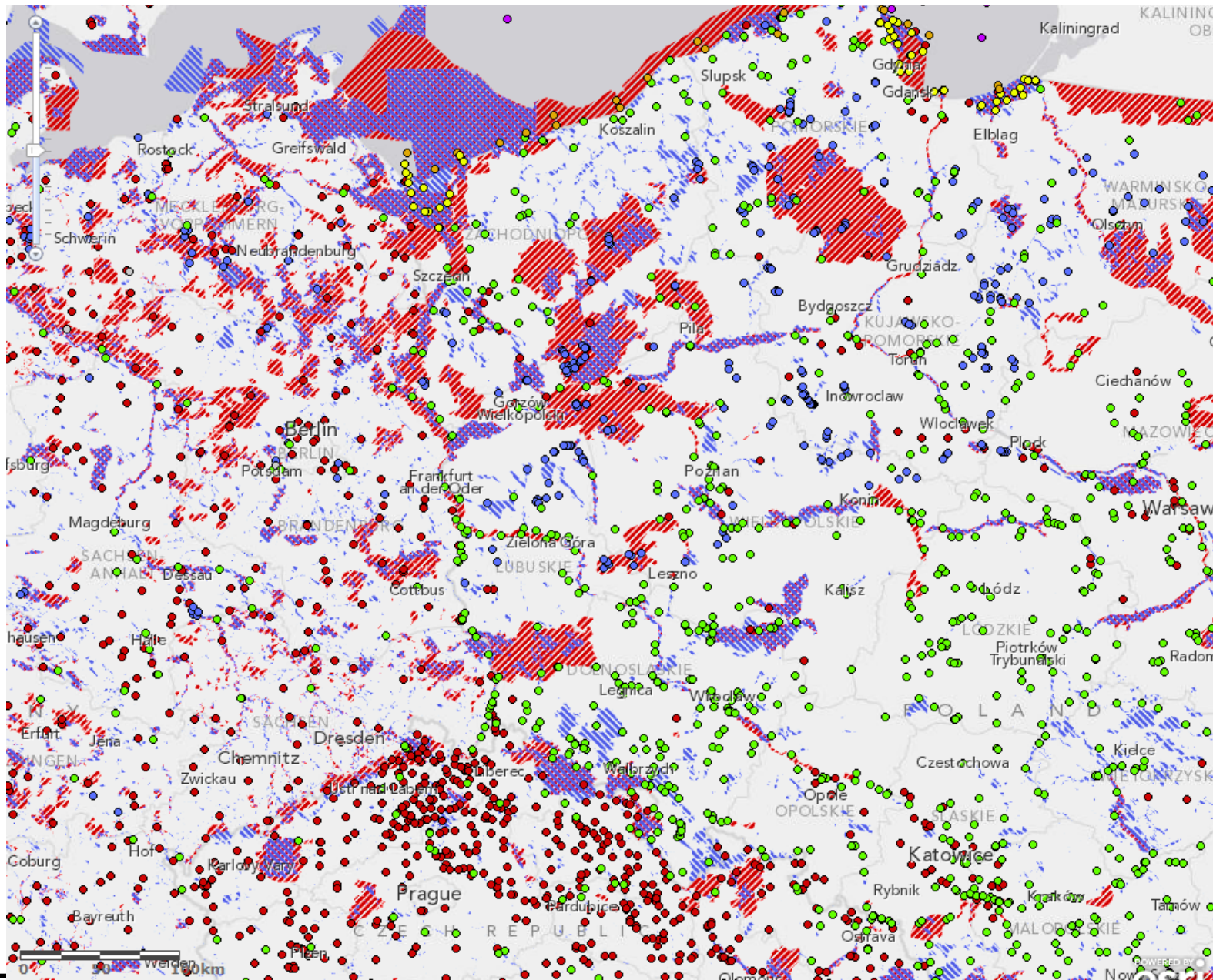
Details | Add | Edit | Basemap | Save | Share | Print | Directions | Measure | Bookmarks | owner:fantamir



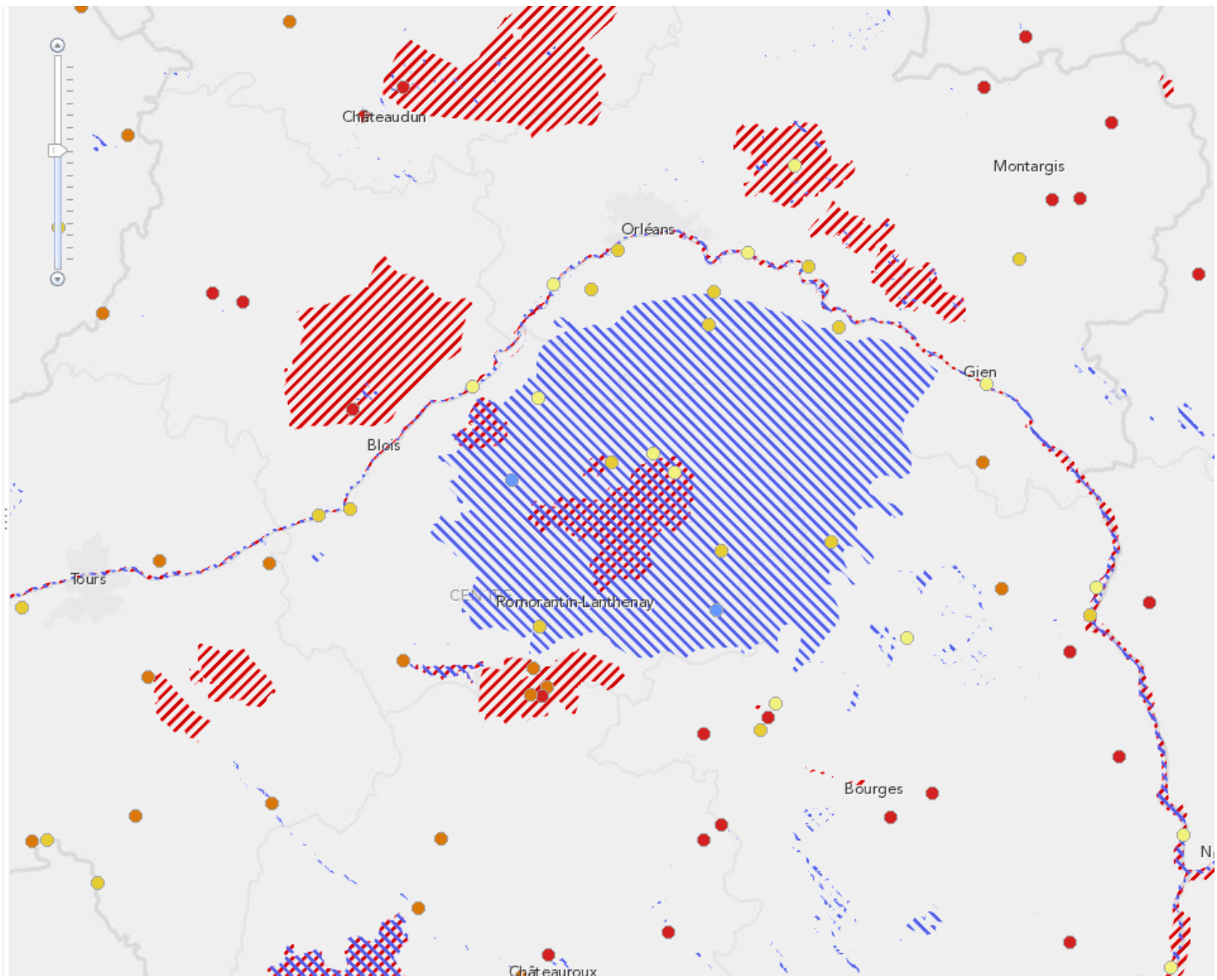
Contents

- GWB 2012 h2 CZonly shapefile
- WISE SoE RL Quality NitrateRivers Dyna WM
- State of Bathing waters (jun 2013 Test)
- UWWT compliance
- UWWTD data - Apportionment of total generated load
- UWWT agglomerations
- UWWT plants
- UWWTD data - receiving areas
- Topographic



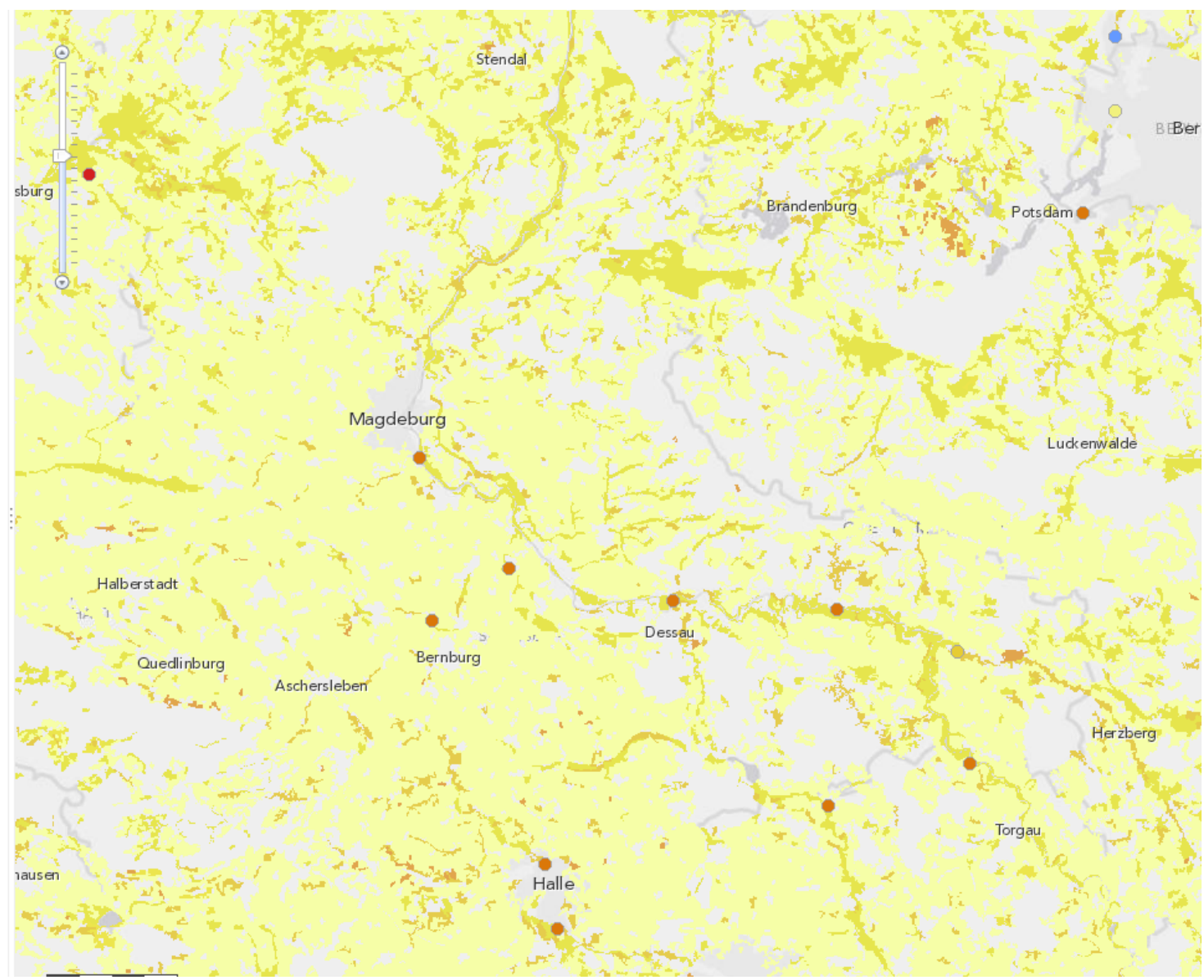


- Contents
- WISE SoE RL Quality Nitrate Rivers Dyna WM TestServer
 - Mean annual nitrate in rivers by country 2011 or the latest reported year
 - < 0.8 mg/l N
 - ≥ 0.8 < 2.0 mg/l N
 - ≥ 2.0 < 3.6 mg/l N
 - ≥ 3.6 < 5.6 mg/l N
 - ≥ 5.6 < 11.3 mg/l N
 - ≥ 11.3 mg/l N
 - RBDs with 10 or fewer stations
 - Mean annual nitrates in rivers aggregated by National River Basin Districts 2011 or the latest reported year
 - Mean annual nitrates in rivers by station 2011
 - Natura2000
 - Corine Land Cover Europe 2006
 - Light Gray Canvas



Contents

- WISE SoE RL Quality Nitrates Rivers Dyna WM TestServer
 - Mean annual nitrate in rivers by country 2011 or the latest reported year
 - < 0.8 mg/l N
 - ≥ 0.8 < 2.0 mg/l N
 - ≥ 2.0 < 3.6 mg/l N
 - ≥ 3.6 < 5.6 mg/l N
 - ≥ 5.6 < 11.3 mg/l N
 - ≥ 11.3 mg/l N
 - RBDs with 10 or fewer stations
 - Mean annual nitrates in rivers aggregated by National River Basin Districts 2011 or the latest reported year
 - Mean annual nitrates in rivers by station 2011
- Natura2000
- Corine Land Cover Europe 2006
 - Contours
 - Artificial Surfaces
 - Agricultural Areas
 - Forest Semi Natural Areas
 - Wetlands
 - Waterbodies
- Light Gray Canvas



Thank you for your attention

