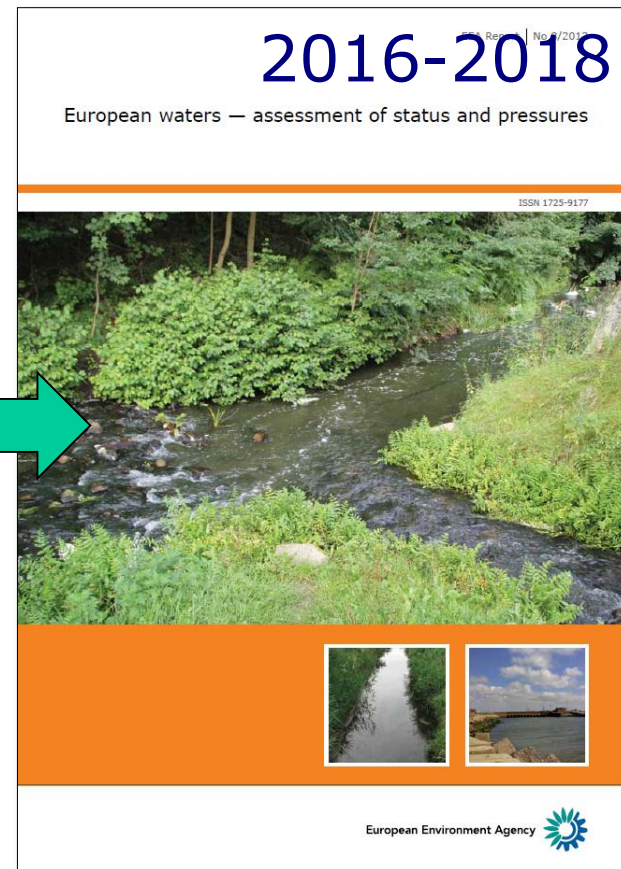
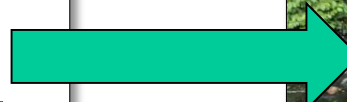
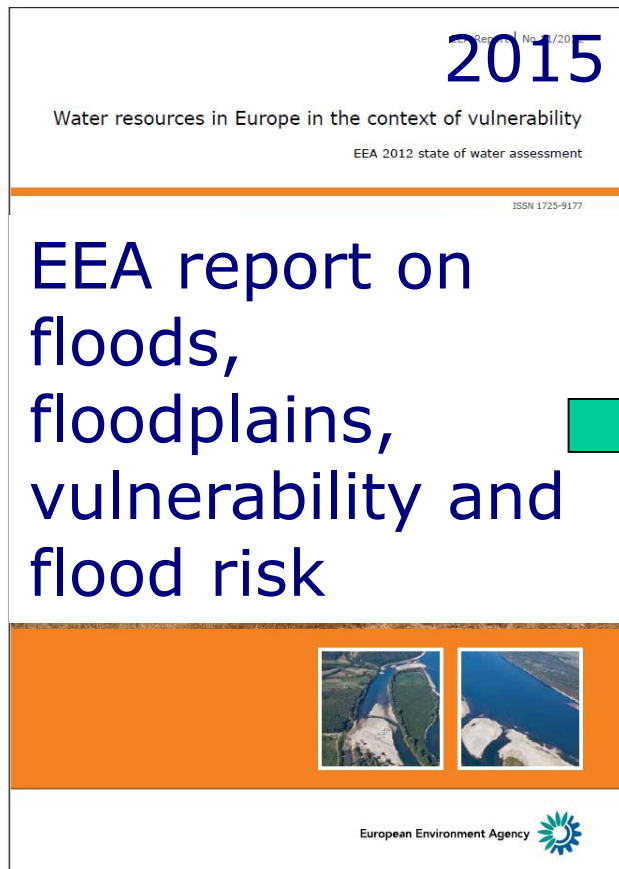


EEA report on floods, floodplains, vulnerability and flood risk

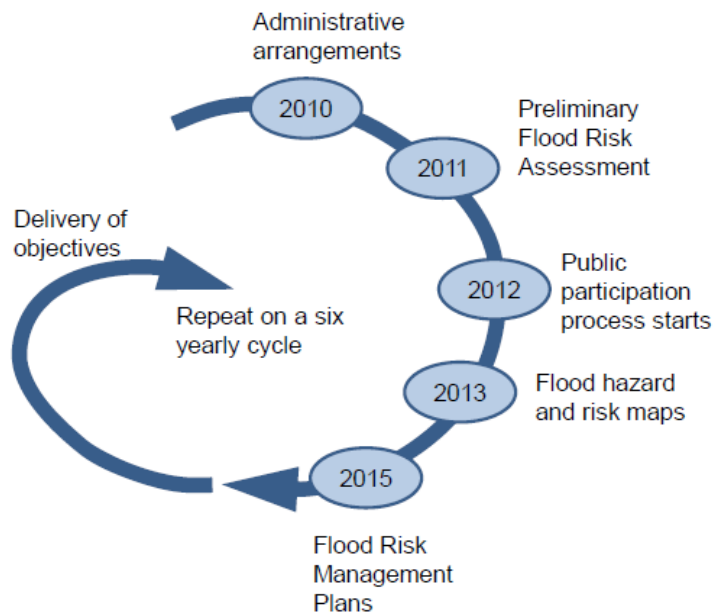
Wouter Vanneuville

Expert Workshop: Environmental effect
of floods and flood protection measures
28-29 May 2015

State of Europe's water assessment



Floods Directive



- Second implementation cycle will start in 2016
- 4 stages:
 - CA/UoM
 - PFRA/APSFR
 - FHRM
 - FRMP
- Past floods impacts:
 - Environment
 - Economic activity
 - Human health
 - Cultural heritage



EEA reports on floods

previous

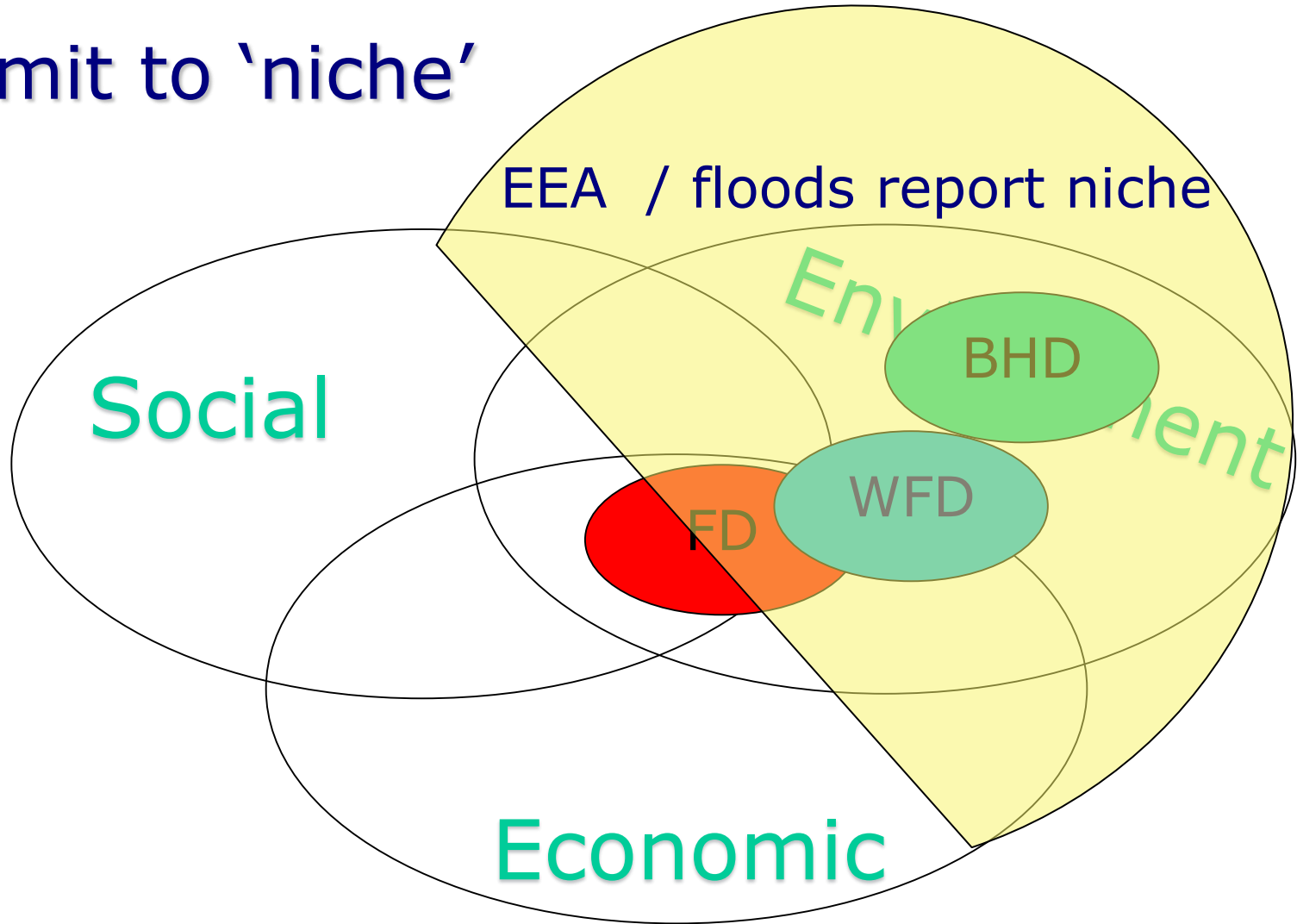
- Water assessments and climate change
- Closely linked to floods directive by using data but no compliance check

2015 report

- Developments since 2012 state of water assessments
 - Database on past floods
 - This workshop
- environmental impacts floods and flood protection measures (link with DRR)

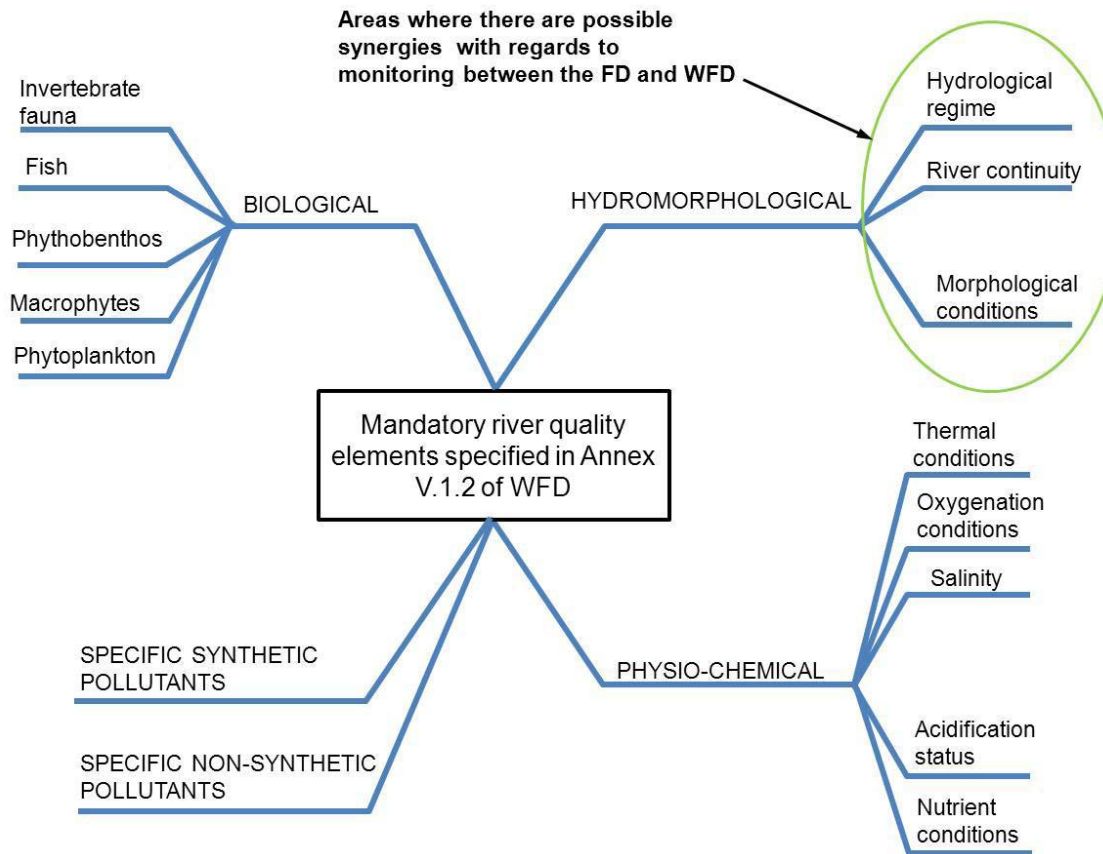


Limit to 'niche'

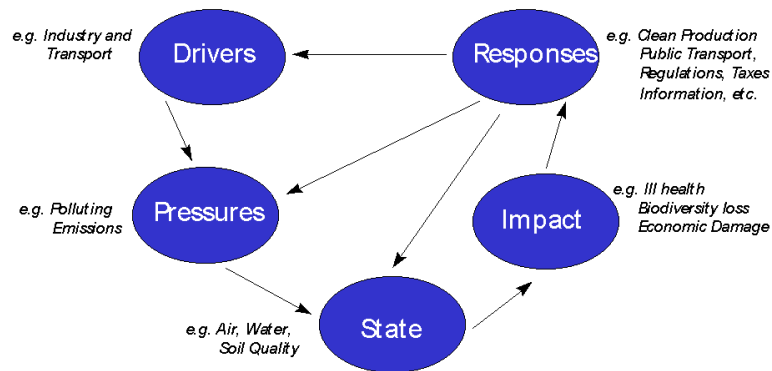


(Source: Adapted from Evers and Nyberg, 2013)

Links WFD-FD (monitoring)



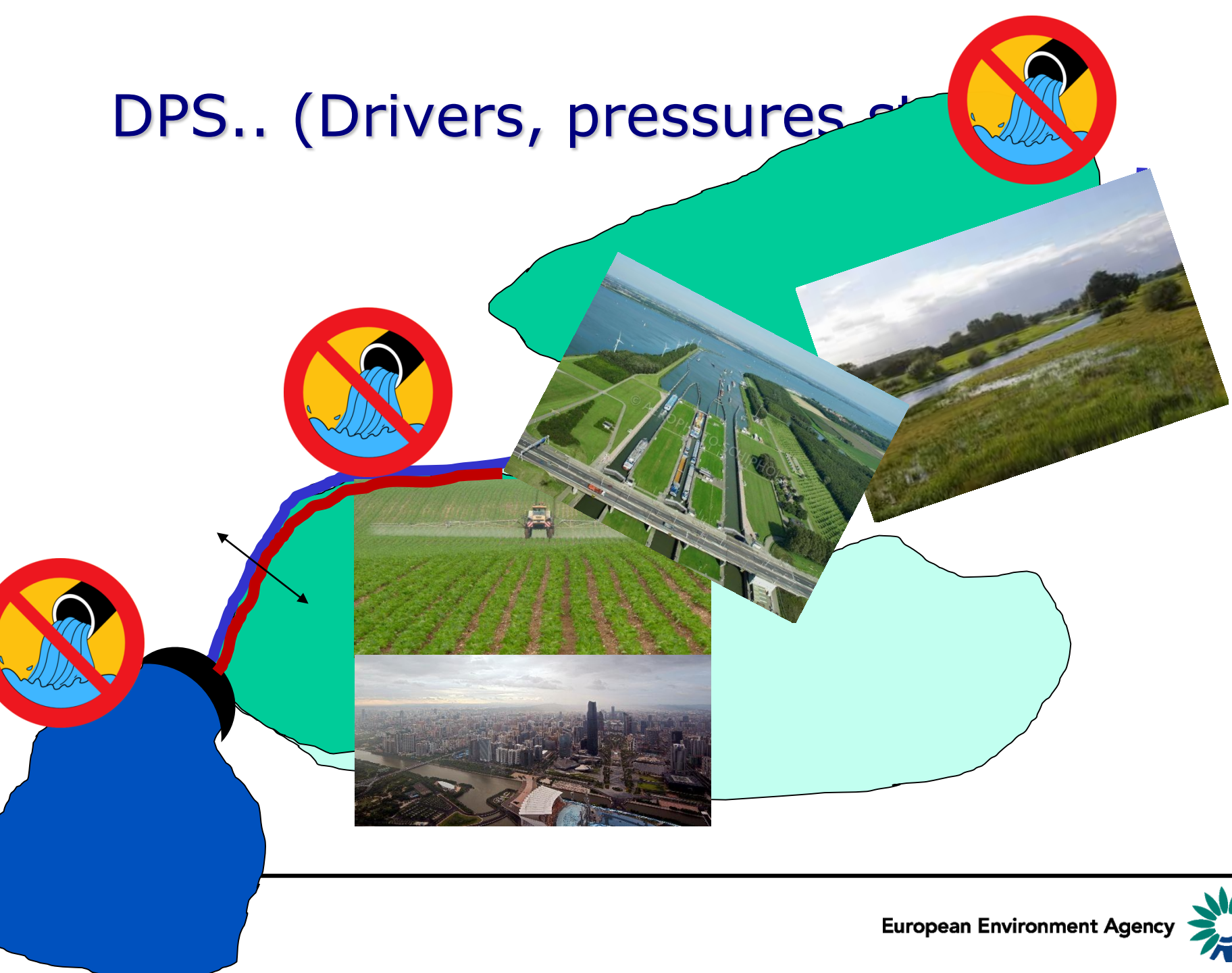
DPSIR



- S: how much left (and what's the quality), trends
- D+P: LU, contamination, connectivity, ...
- I: environment (economic, social, cultural heritage)
- R: thematic (CAP, urbanisation ...) and cross-cutting (CCA ...)



DPS.. (Drivers, pressures et



...I. (impact)

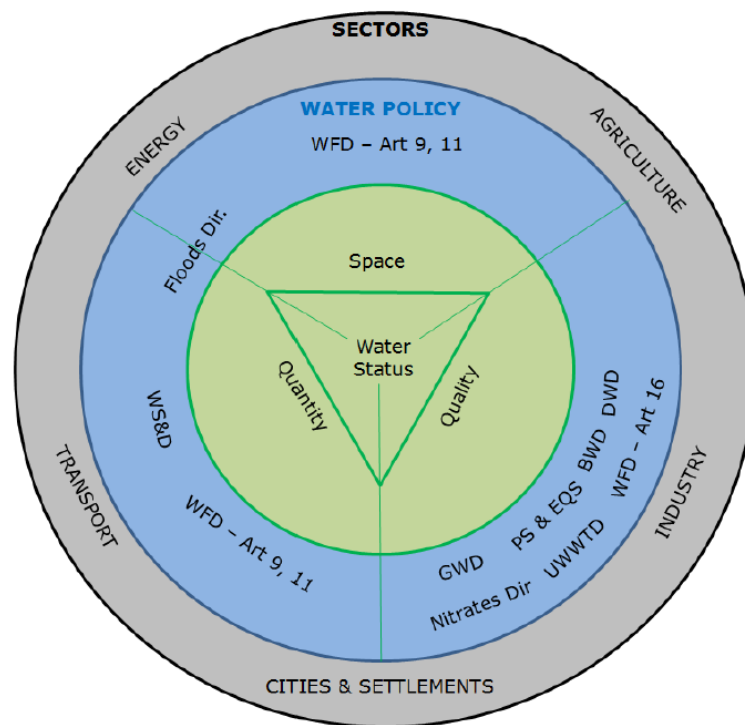


- Environmental impacts
 - + and –
 - Catchment (RBD) scale / floodplain
- ESS delivered (or decreased)

....R (Response)

- Implementation of WFD/FD (PoM) and nature directives
- Implementation of thematic policies

Figure 2: Illustration of assessment of EU water policy structure against water status elements



Source: Stefan Scheuer Consulting 2014

....R (Response) - 2

- Cross cutting issues
 - Often related to drivers
 - CCA, socio-economic developments
 - Governance
- The evolutions since the “Blueprint” 2012
 - Screening assessment of draft FRMP
 - Cost of non-Europe report on water legislation
 - NWRM
 - GI
 - ...



Conclusions

- Lessons learned report
- Suggestions for 2nd cycle FD (and 3rd cycle WFD)
 - No policy creation
 - Towards better implementation / coordination in between FD, WFD and BHD
 - By better / easier reporting (guidelines)
 - Linking ESS and DRR/CCA

