

WISE SoE data request 2007 - Step 3

EIONET-Water: Groundwater

Bulgaria

Aggregated data

Graphical presentation of possible outliers

Following graphical representations of time series were generated from data in tables, which are uploaded at Eionet Water library on EEA CIRCA on same place as this document. The tables contains list of records which responsible ETC-WTR data manager detected as outlying using documented rules and methods.

Responsible national data managers or experts can use this document to help them decide whether detected values are errors or results of natural processes which are possible in respective area. Results of their decision (either corrected values or explanation) should be prepared and delivered according published guidelines or upon an agreement with responsible data manager of the ETC-WTR.

Time series graphs are ordered by determinand and by station ID in this order.

Determinand:

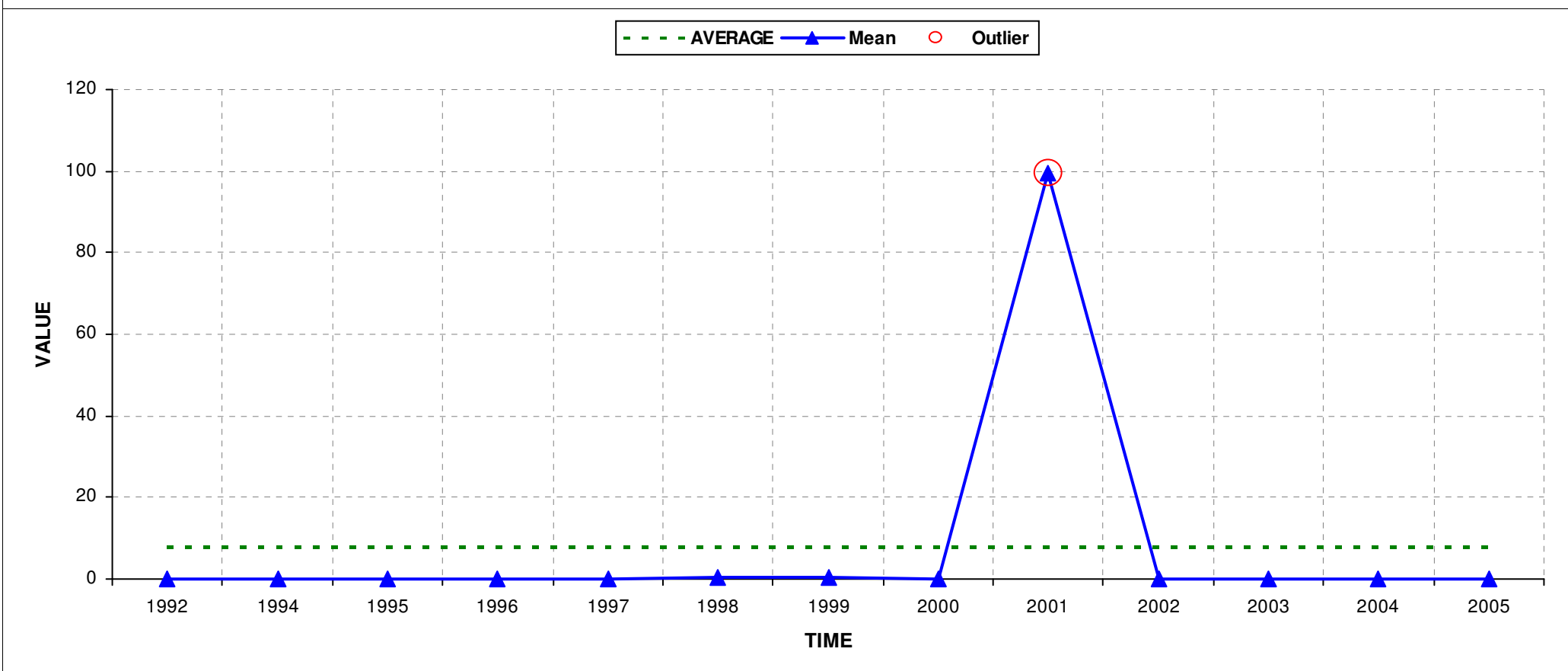
Ammonium

WaterbaseID:

BG_GW_BG001

Outlier values ([Year, ViolatedRule]: Mean):

[2001, 111]: 99.501



Determinand:

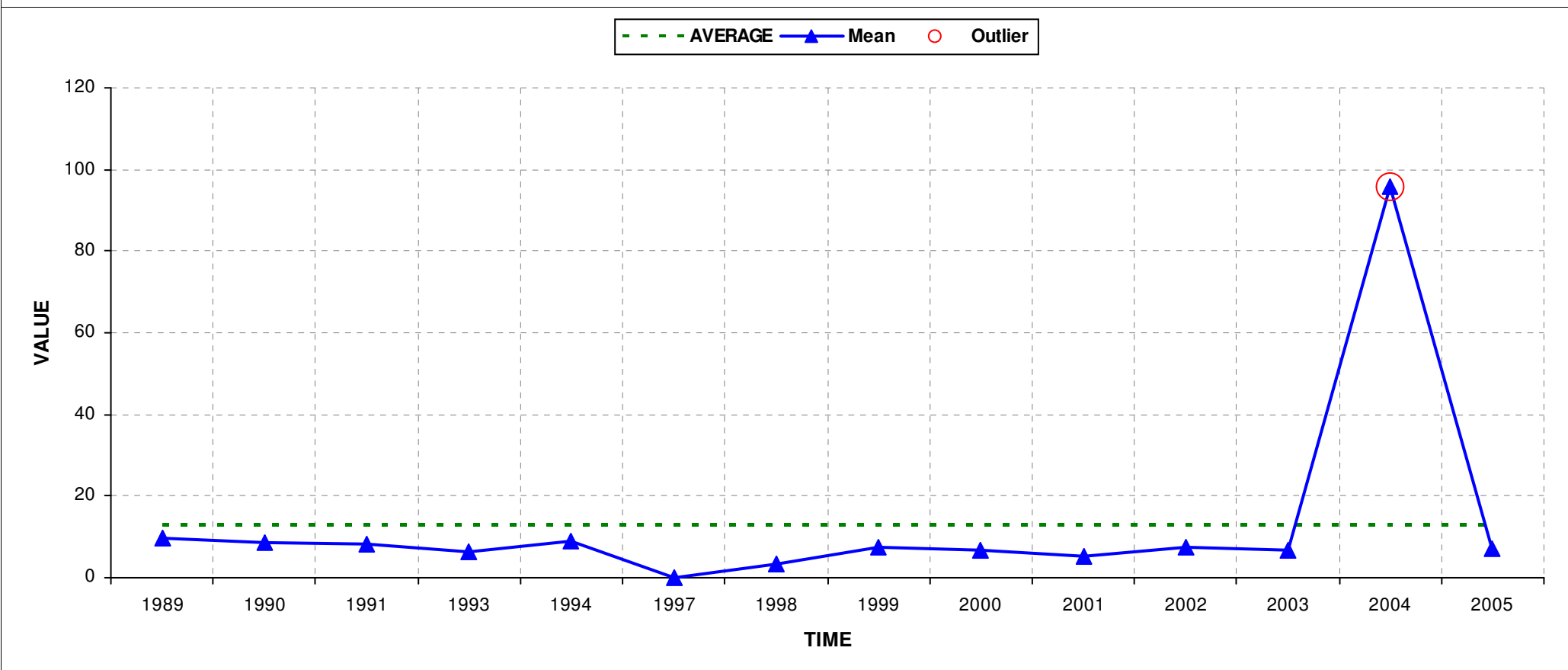
DO

WaterbaseID:

BG_GW_BG076

Outlier values ([Year, ViolatedRule]: Mean):

[2004, 111]: 95.636



Determinand:

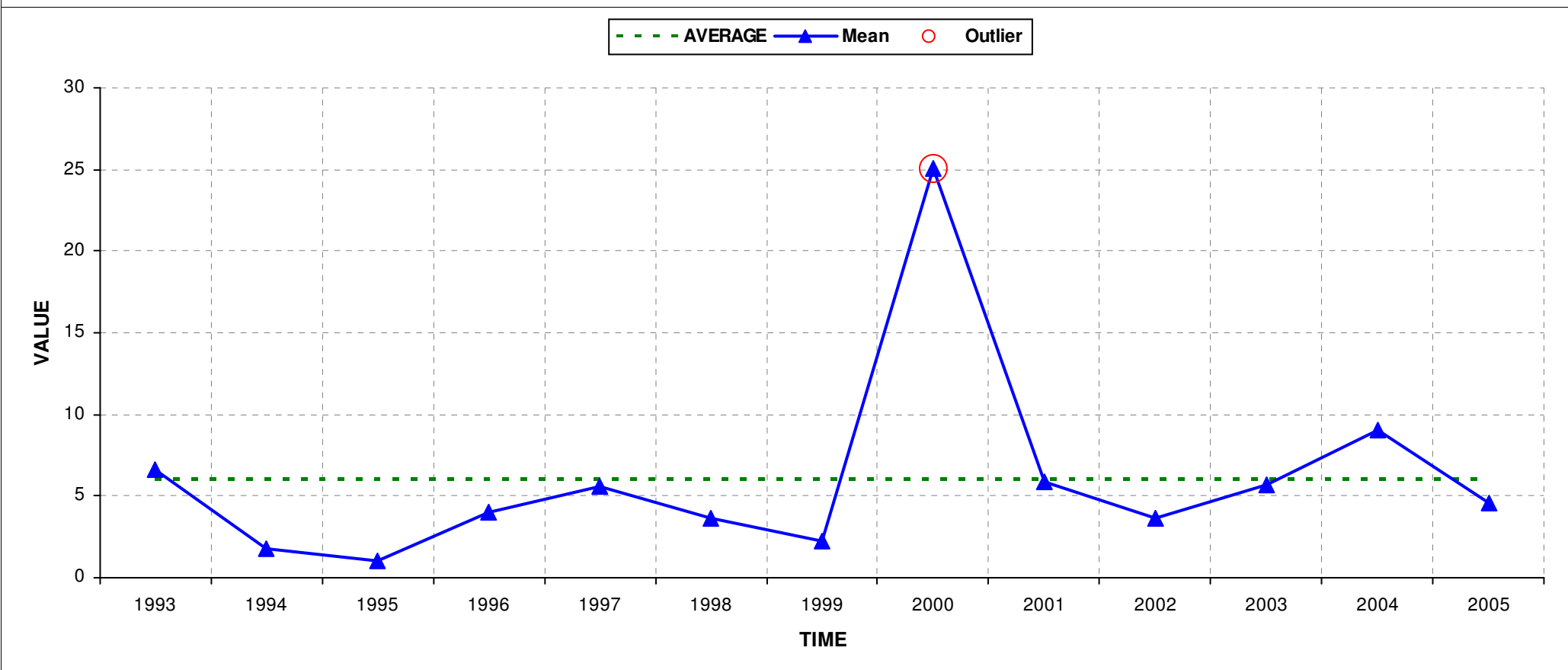
Nitrate

WaterbaseID:

BG_GW_BG003

Outlier values ([Year, ViolatedRule]: Mean):

[2000, 111]: 25.027



Determinand:

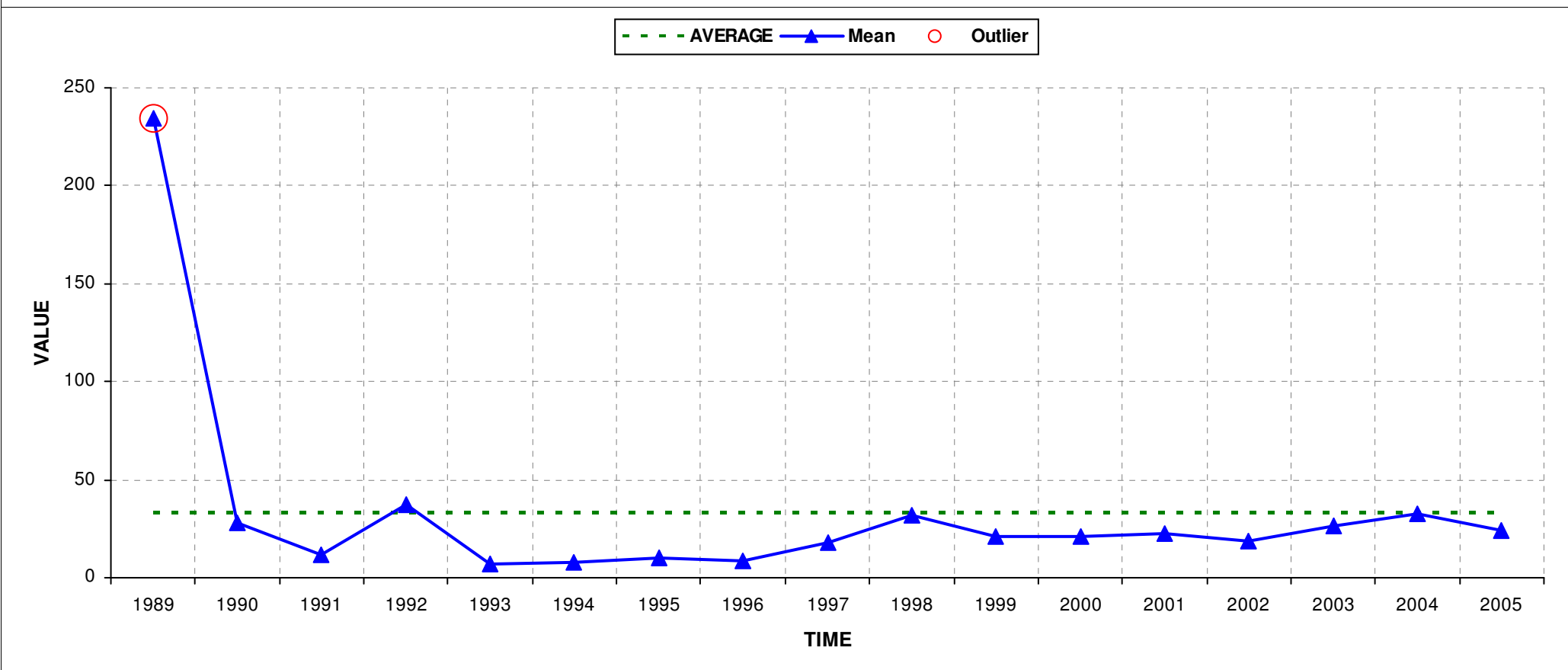
Nitrate

WaterbaseID:

BG_GW_BG021

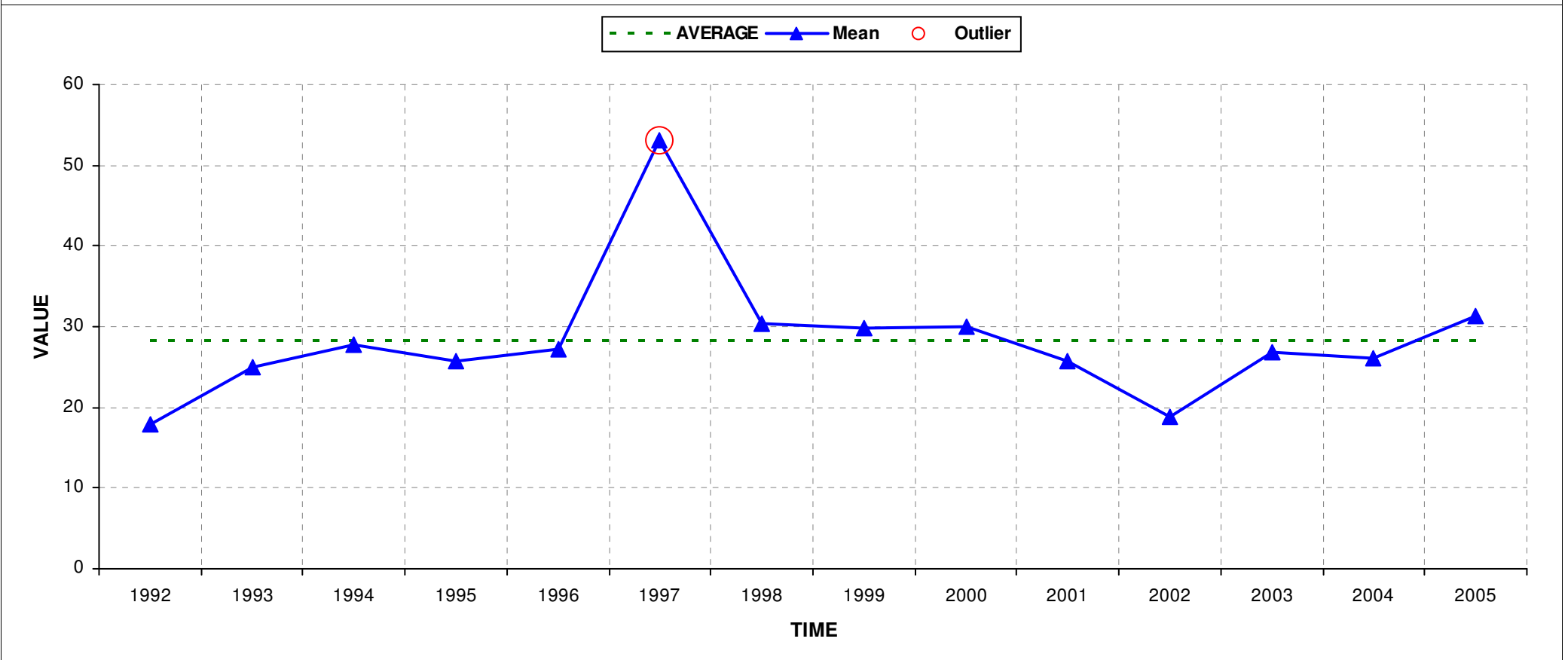
Outlier values ([Year, ViolatedRule]: Mean):

[1989, 111]: 234.8



Determinand:
Nitrate
WaterbaseID:
BG_GW_BG046

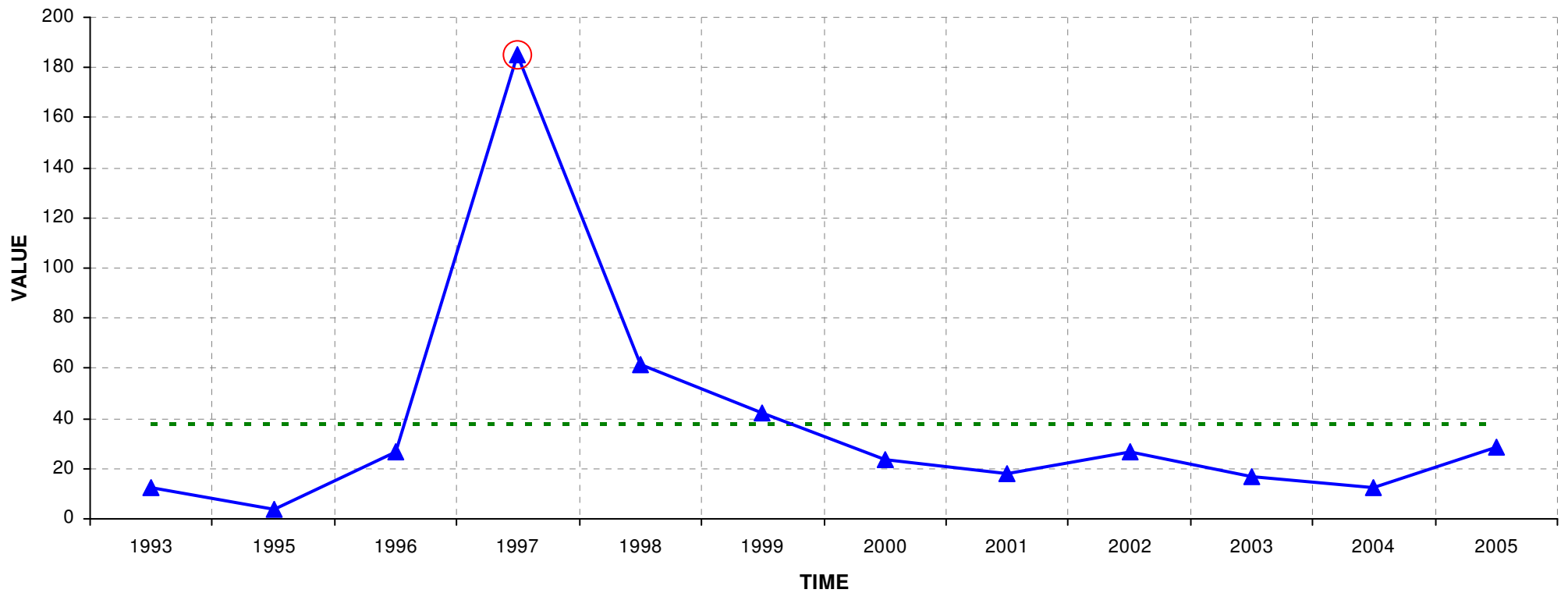
Outlier values ([Year, ViolatedRule]: Mean):
[1997, 111]: 53.103



Determinand:
Nitrate
WaterbaseID:
BG_GW_BG053

Outlier values ([Year, ViolatedRule]: Mean):
[1997, 111]: 184.858

--- AVERAGE ▲ Mean ○ Outlier



Determinand:

Nitrate

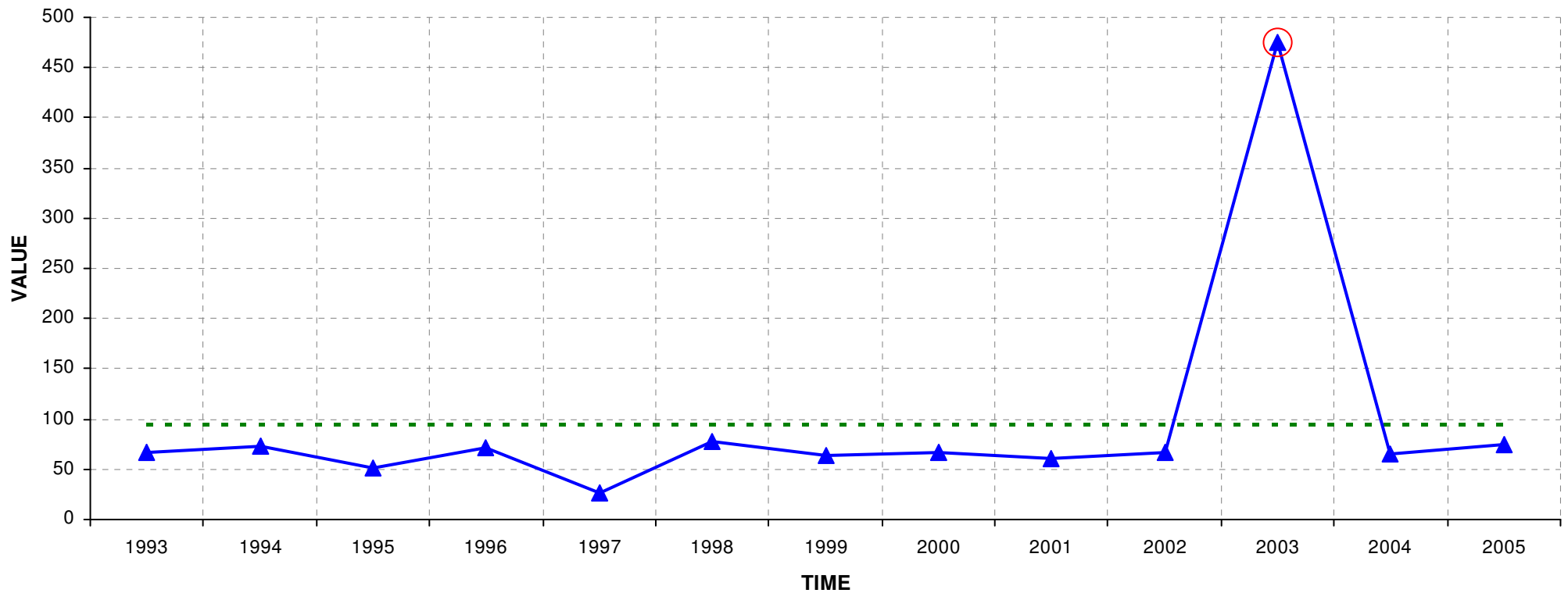
WaterbaseID:

BG_GW_BG103

Outlier values ([Year, ViolatedRule]: Mean):

[2003, 111]: 475.739

--- AVERAGE ▲ Mean ○ Outlier



Determinand:

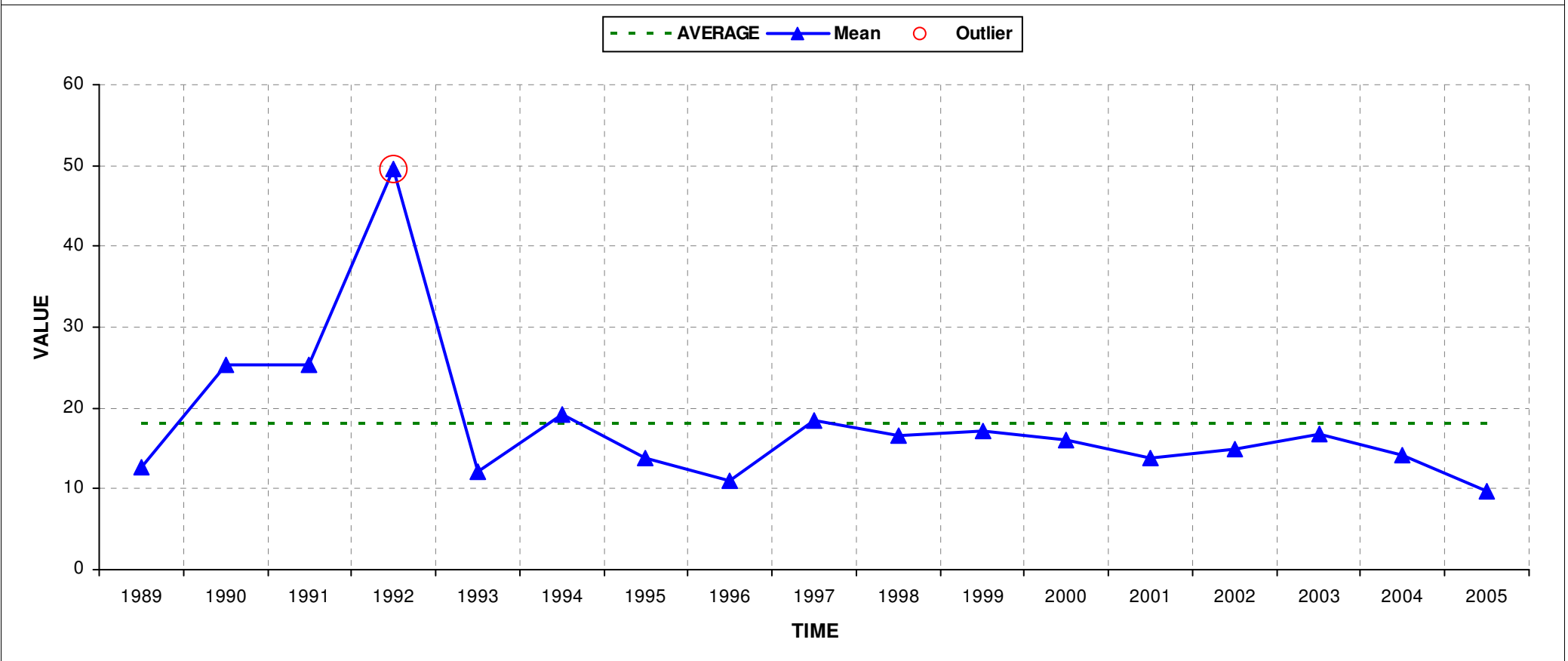
Nitrate

WaterbaseID:

BG_GW_BG147

Outlier values ([Year, ViolatedRule]: Mean):

[1992, 111]: 49.62



Determinand:

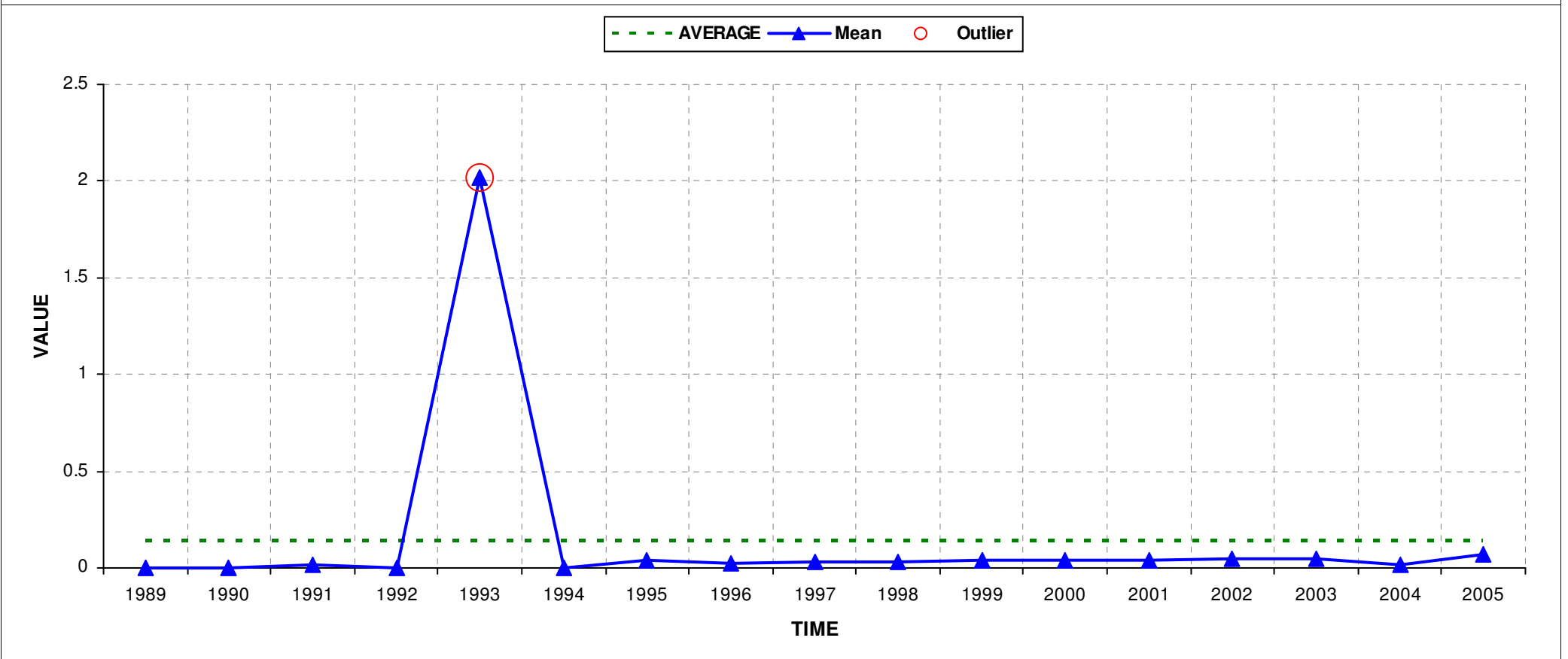
Nitrite

WaterbaseID:

BG_GW_BG019

Outlier values ([Year, ViolatedRule]: Mean):

[1993, 111]: 2.022



Determinand:

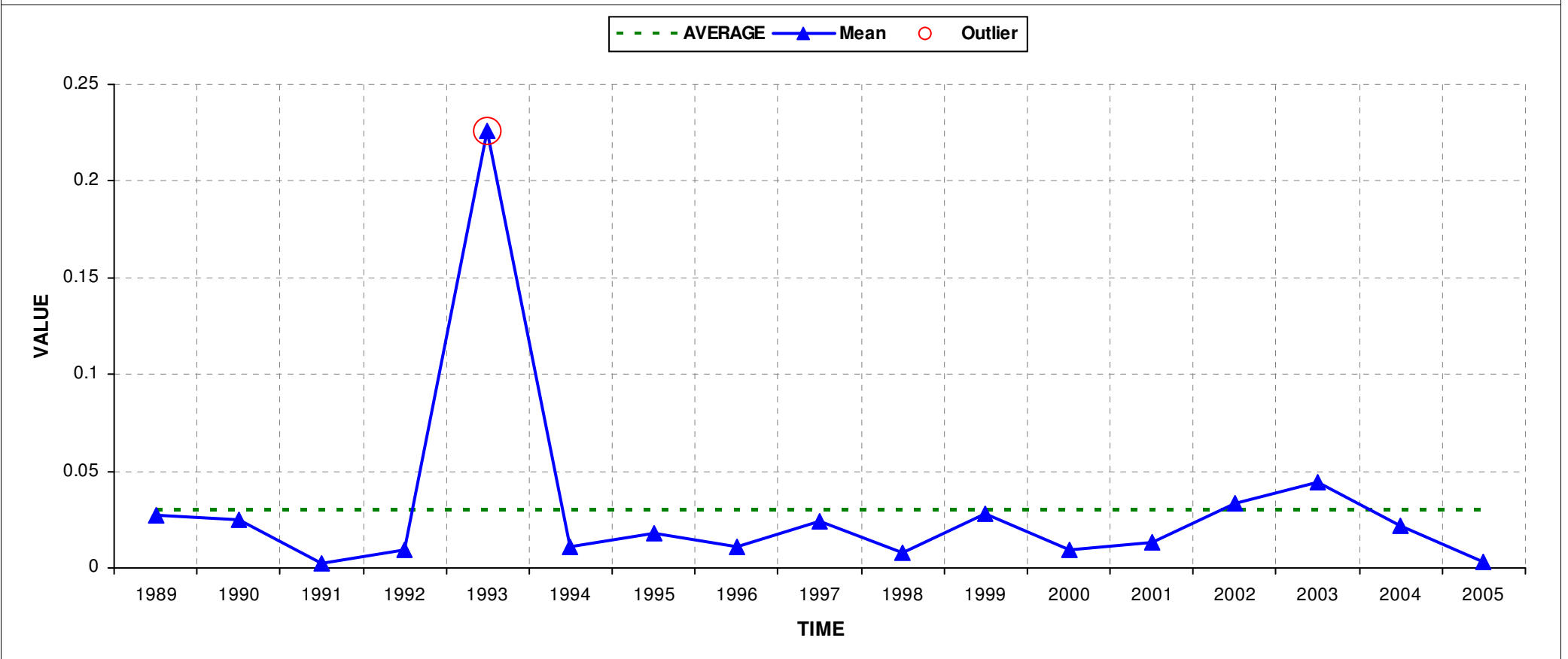
Nitrite

WaterbaseID:

BG_GW_BG049

Outlier values ([Year, ViolatedRule]: Mean):

[1993, 111]: 0.226



Determinand:

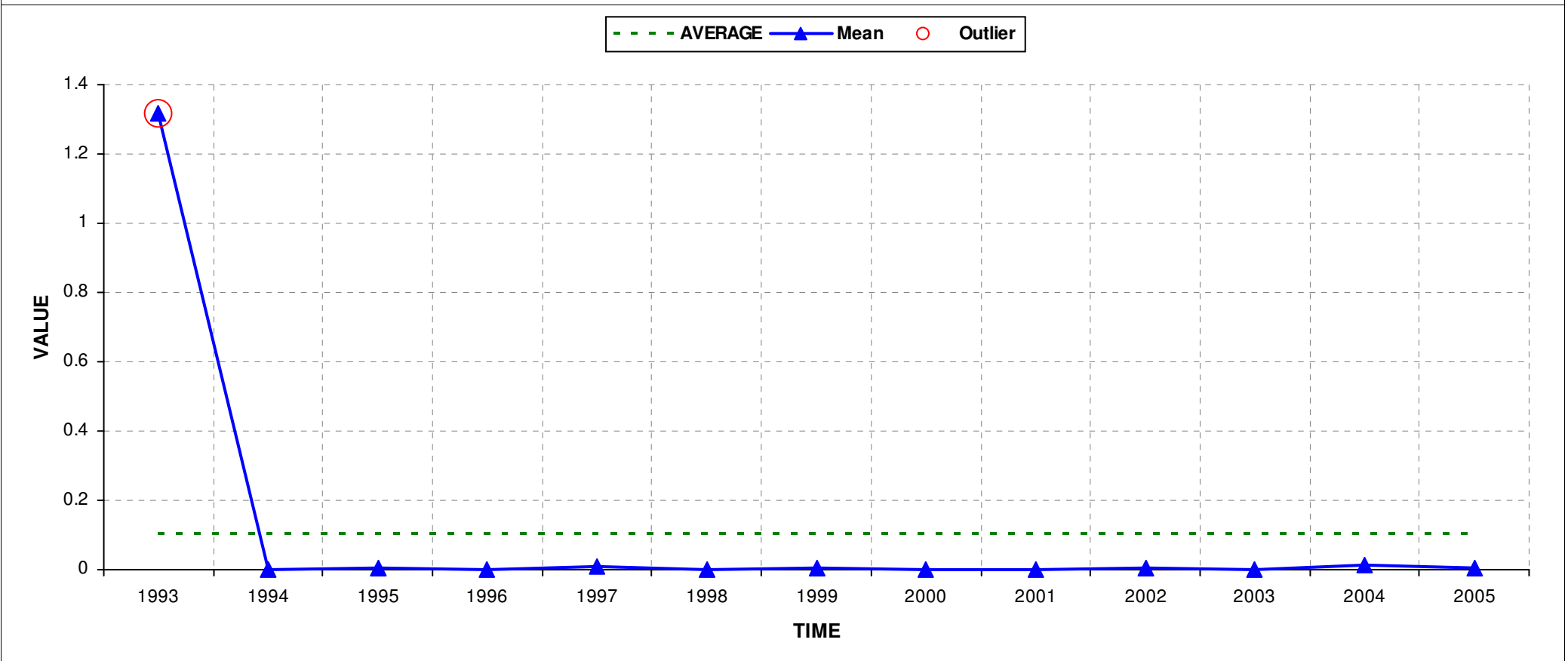
Nitrite

WaterbaseID:

BG_GW_BG064

Outlier values ([Year, ViolatedRule]: Mean):

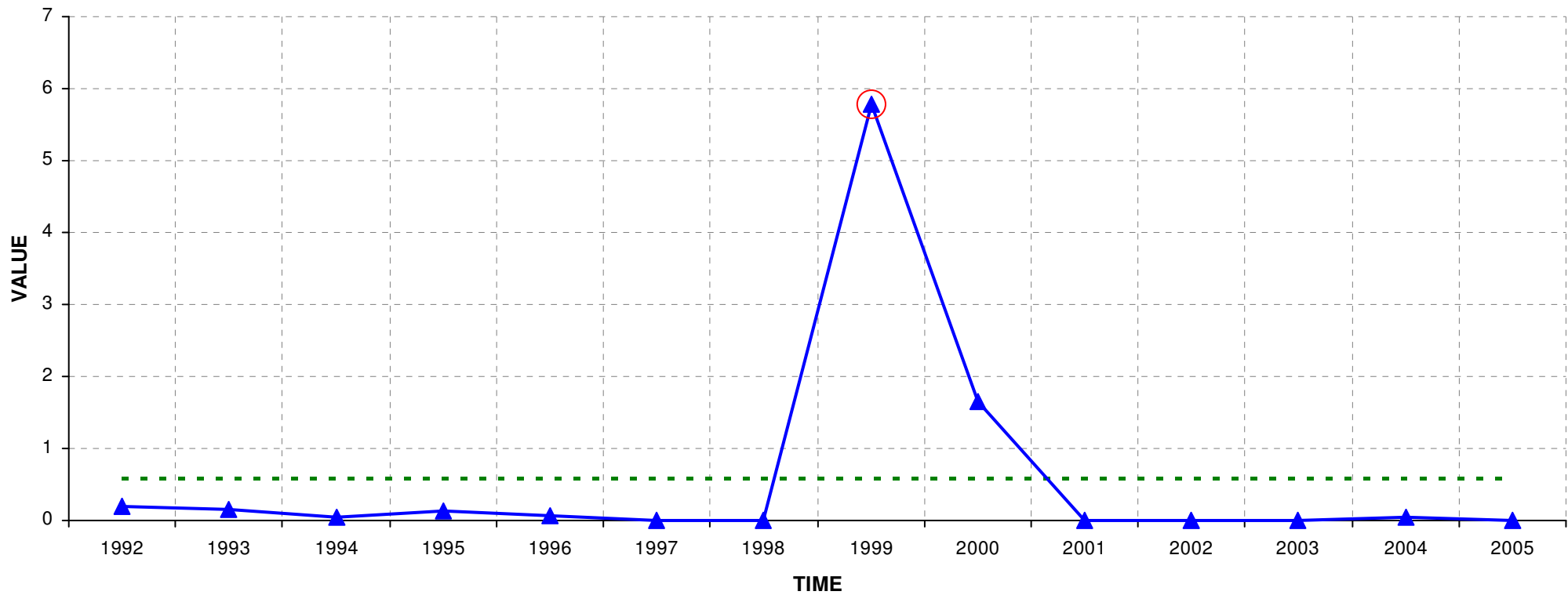
[1993, 111]: 1.316



Determinand:
Nitrite
WaterbaseID:
BG_GW_BG085

Outlier values ([Year, ViolatedRule]: Mean):
[1999, 111]: 5.79

--- AVERAGE ▲ Mean ○ Outlier



Determinand:

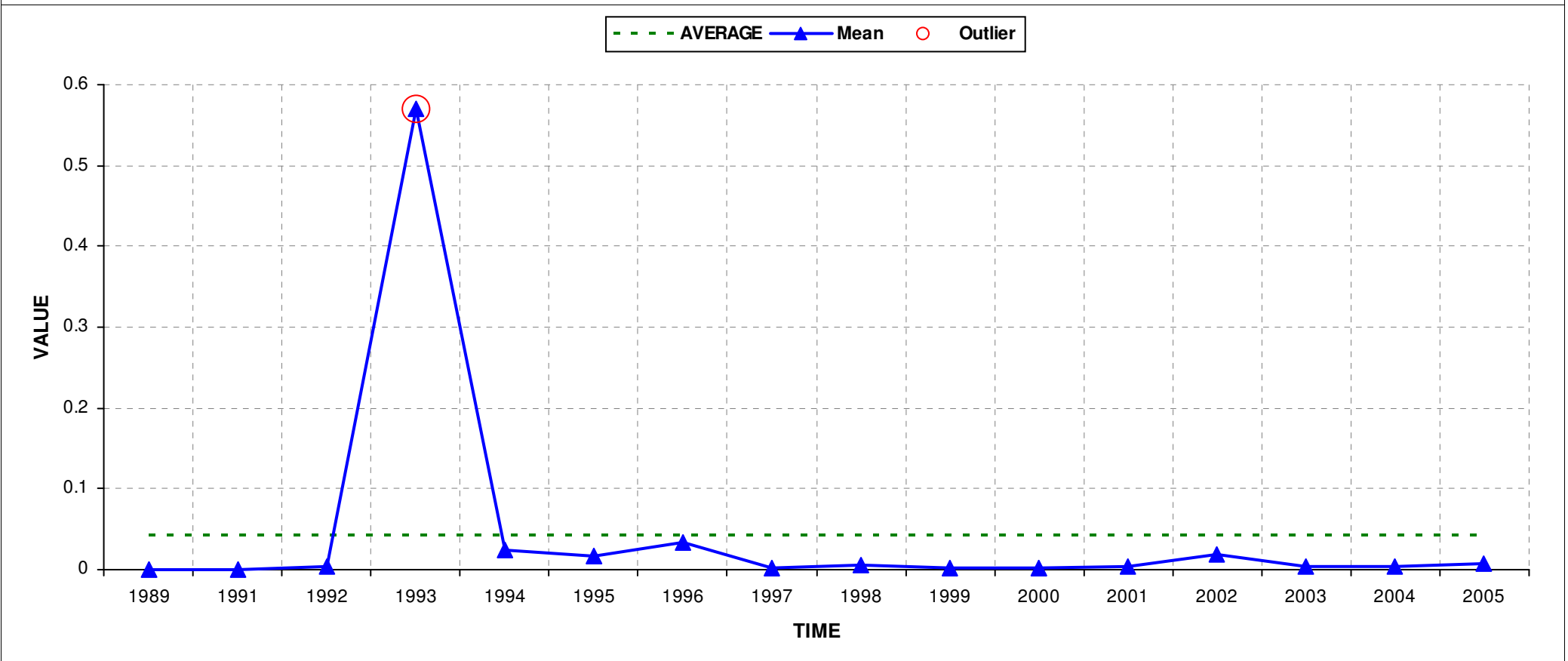
Nitrite

WaterbaseID:

BG_GW_BG104

Outlier values ([Year, ViolatedRule]: Mean):

[1993, 111]: 0.57



Determinand:

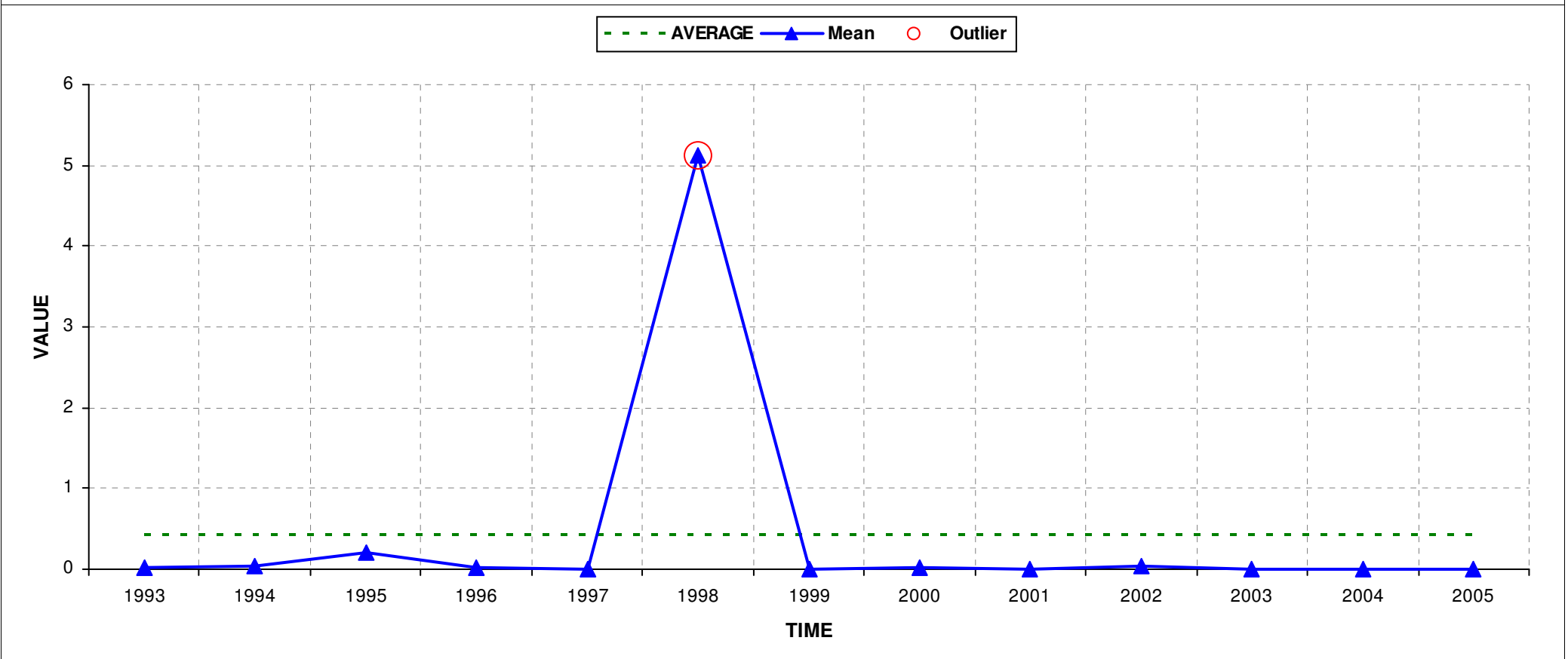
Nitrite

WaterbaseID:

BG_GW_BG123

Outlier values ([Year, ViolatedRule]: Mean):

[1998, 111]: 5.124



Determinand:

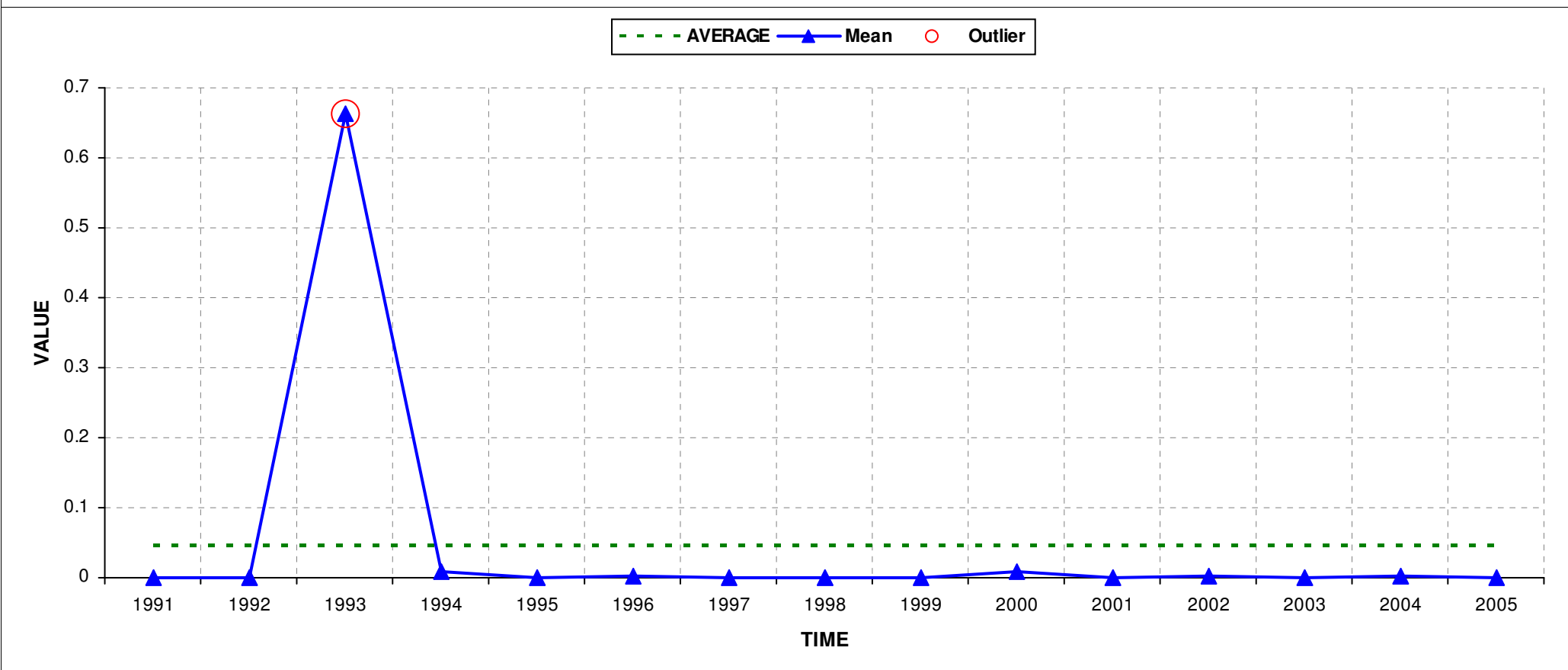
Nitrite

WaterbaseID:

BG_GW_BG140

Outlier values ([Year, ViolatedRule]: Mean):

[1993, 111]: 0.663



Determinand:
Nitrite
WaterbaseID:
BG_GW_BG141

Outlier values ([Year, ViolatedRule]: Mean):
[1993, 111]: 0.569

--- AVERAGE ▲ Mean ○ Outlier

