



***WFD2016 Reporting Workshop
under the Common Implementation
Strategy of the Water Framework
Directive (WFD)***

-

Reporting National RBDSUCA

12/11/2015



Content

0. Overview
1. Reporting data schemas
2. Quality control elements
3. Requirements for data exchange

0. Overview

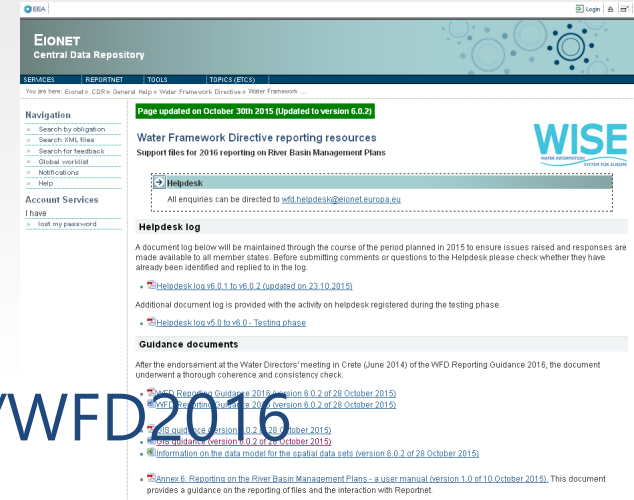
Resources & tools

- WFD Reporting Guidance
- UML Data Model
- Schema:

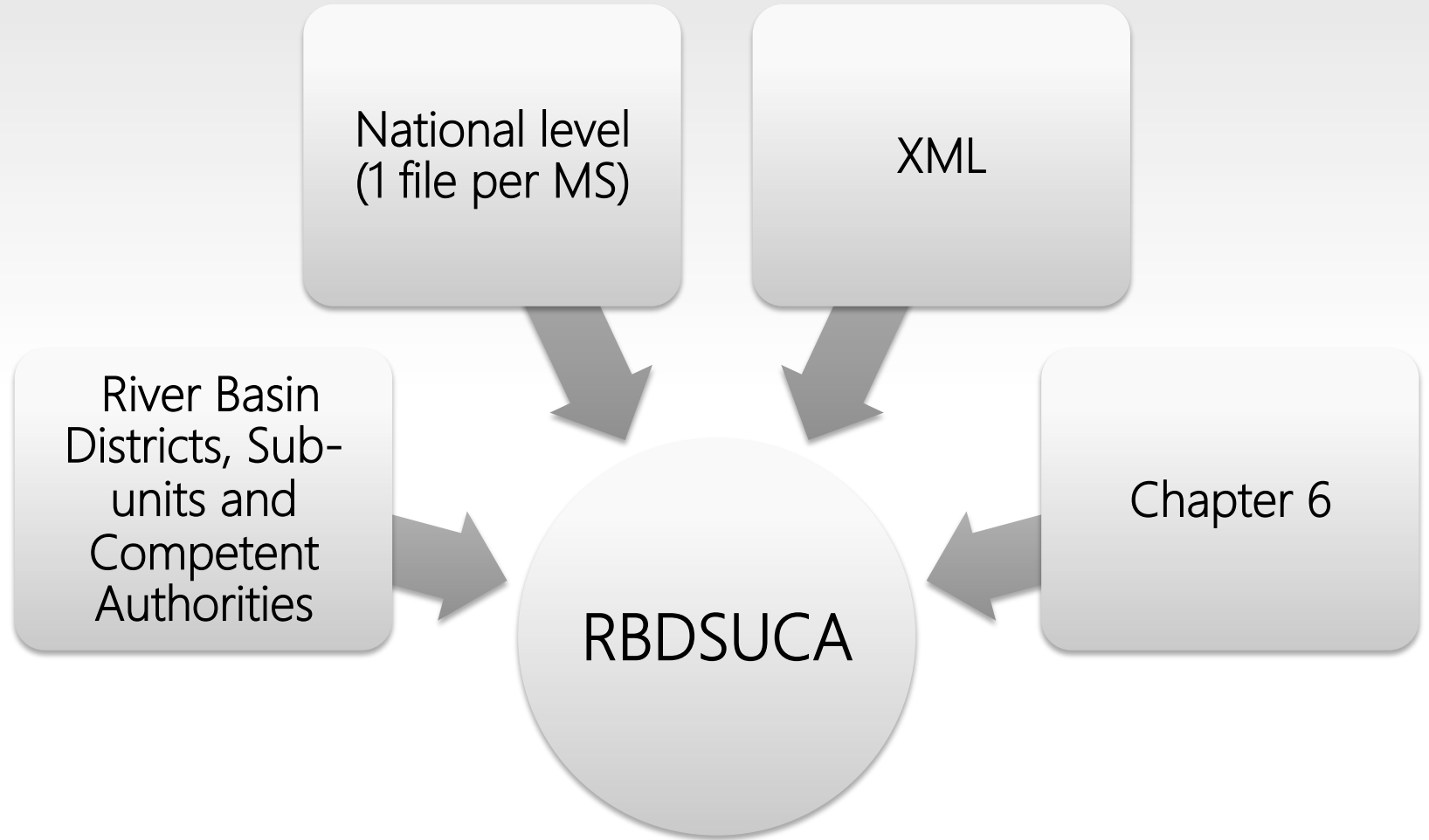
<http://dd.eionet.europa.eu/schemas/WFD2016>

- Access DB template
- Guide to report Access DB
- Conversion tool from Access to XML

http://cdr.eionet.europa.eu/help/WFD/WFD_521_2016



0. Overview



0. Overview

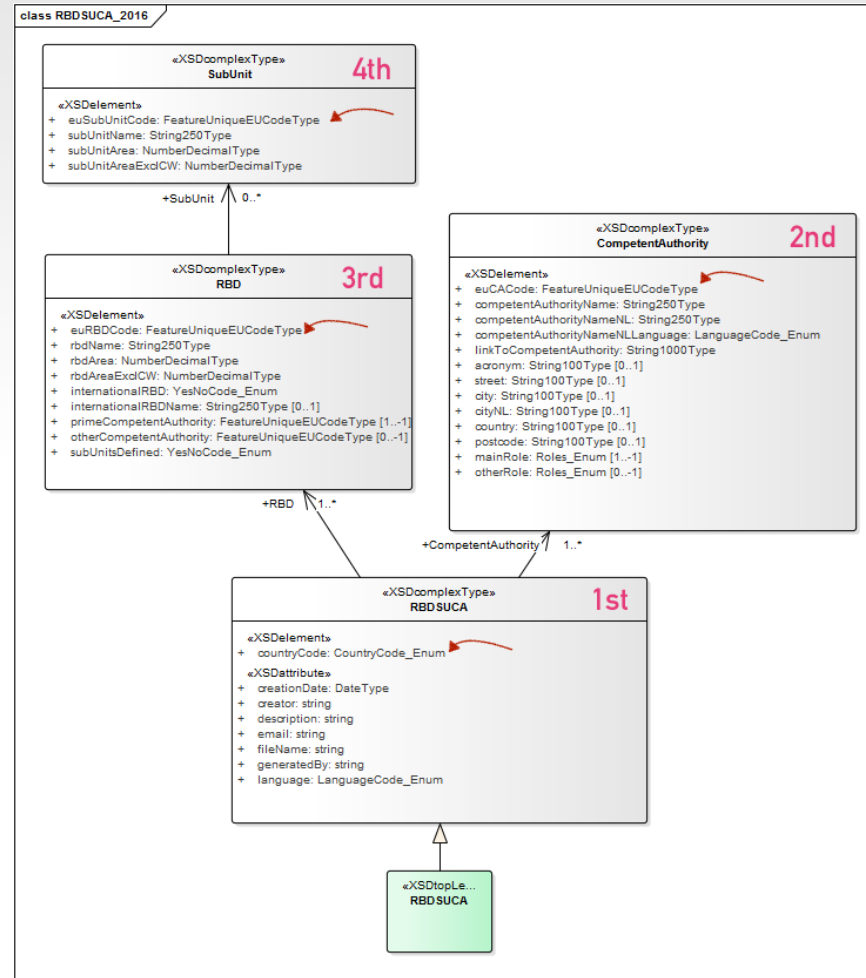
**Competent
Authorities**

**River Basin
Districts**

- Identify the Competent Authorities involved in the implementation of the WFD
- RBDs as the geographical extent for the coordination of water resources
- Sub-units as the division of the RBDs

SubUnits

1. Reporting data schema: UML



1. Reporting data schema

Competent authorities

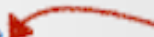
- Unique EU code
- Name
- Language
- Website link
- Role (Enumeration – Annex 8K)

	«XSDcomplexType» CompetentAuthority	2nd
«XSDelement» + euCACode: FeatureUniqueEUCodeType + competentAuthorityName: String250Type + competentAuthorityNameNL: String250Type + competentAuthorityNameNLLanguage: LanguageCode_Enum + linkToCompetentAuthority: String1000Type + acronym: String100Type [0..1] + street: String100Type [0..1] + city: String100Type [0..1] + cityNL: String100Type [0..1] + country: String100Type [0..1] + postcode: String100Type [0..1] + mainRole: Roles_Enum [1..-1] + otherRole: Roles_Enum [0..-1]		

1. Reporting data schema

River Basin Districts

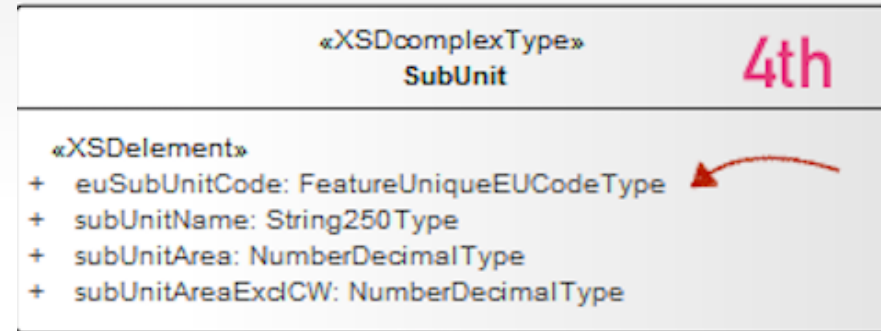
- Unique EU code
- Name
- Area (km²) including and excluding coastal waters
- International RBD?
- Prime CA
- Sub-units?

«XSDcomplexType» RBD	3rd
«XSDelement»	
+ euRBDCode: FeatureUniqueEUCodeType	
+ rbdName: String250Type	
+ rbdArea: NumberDecimalType	
+ rbdAreaExclCW: NumberDecimalType	
+ internationalRBD: YesNoCode_Enum	
+ internationalRBDName: String250Type [0..1]	
+ primeCompetentAuthority: FeatureUniqueEUCodeType [1..-1]	
+ otherCompetentAuthority: FeatureUniqueEUCodeType [0..-1]	
+ subUnitsDefined: YesNoCode_Enum	

1. Reporting data schema

SubUnits (if exist)

- Unique EU code
- Name
- Area (km2) including and excluding coastal waters



3. Quality control elements

Within schema checks

RBDSUCA	CompetentAuthority	euCACode	Element check: First 2 characters must be the Member State's 2-alpha character ISO country code.
RBDSUCA	CompetentAuthority	euCACode	Within-schema check: euCACode must be unique.
RBDSUCA	CompetentAuthority	mainRole	Within-schema check: Each main role must be covered by at least one Competent Authority within the Member State.
RBDSUCA	RBD	euRBDCode	Element check: First 2 characters must be the Member State's 2-alpha character ISO country code.
RBDSUCA	RBD	euRBDCode	Within-schema check: euRBDCode must be unique.
RBDSUCA	RBD	internationalRBDName	Conditional check: Report if internationalRBD is 'Yes'.
RBDSUCA	RBD	primeCompetentAuthority	Within-schema check: The reported euCACode(s) must be consistent with the codes reported in RBDSUCA/CompetentAuthority/euCACode.
RBDSUCA	RBD	otherCompetentAuthority	Within-schema check: The reported euCACode(s) must be consistent with the codes reported in RBDSUCA/CompetentAuthority/euCACode.

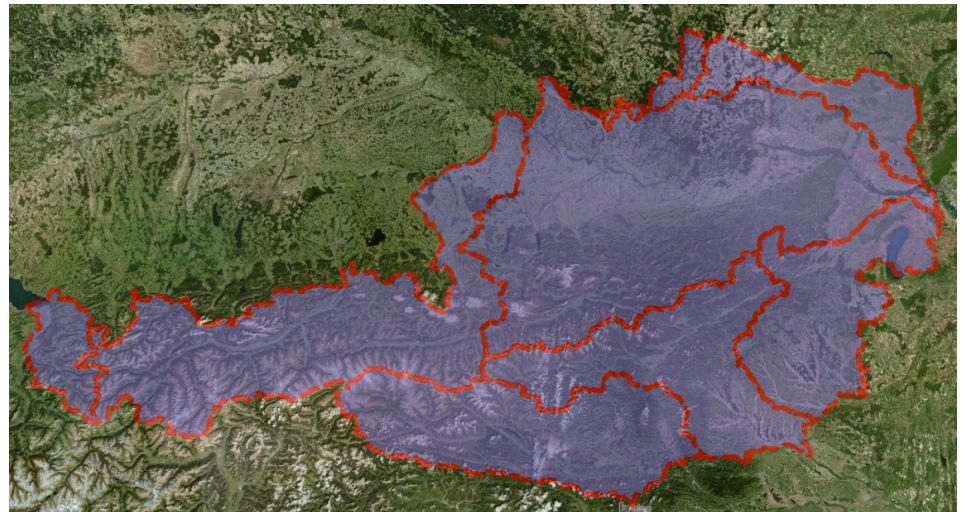
3. Quality control elements

Cross schema checks

- Validation against spatial data (RBDs-SubUnits)

RBDSUCA	RBD	euRBDCode	Element must exist in the spatial database (wiseEvolutionType != 'deletion')
RBDSUCA	subUnit	euSubUnitCode	Element must exist in the spatial database (wiseEvolutionType != 'deletion')

```
<RBD>
  <euRBDCode></euRBDCode>
  <rbdBName></rbdBName>
  <rbdBArea></rbdBArea>
  <rbdBAreaExclCW></rbdBAreaExclCW>
  <internationalLRBD></internationalLRBD>
  <subUnitsDefined></subUnitsDefined>
  <SubUnit>
    <euSubUnitCode></euSubUnitCode>
    <subUnitName></subUnitName>
    <subUnitArea></subUnitArea>
    <subUnitAreaExclCW></subUnitAreaExclCW>
  </SubUnit>
</RBD>
```



3. Quality control elements

Cross schema checks

- Validation against spatial data

RBDSUCA	RBD	euRBDCode	Element must exist in the spatial database (wiseEvolutionType != 'deletion')
RBDSUCA	subUnit	euSubUnitCode	Element must exist in the spatial database (wiseEvolutionType != 'deletion')

3. Quality control elements

Statistics: Summary

- Information on RBDs and sub-units list
- Information on Competent Authorities list

Statistics RBDSUCA

4.1.1. Information on RBDs and sub-units

RBD EU code	RBD name	Area including coastal waters	Area excluding coastal waters	International? Y/N	Number of sub-units	Prime Competent Authority
FRB2	La Sambre	1107	1107	Y	0	
FRG	La Loire, les cours d'eau cÃ©tiers vendÃ©ens et bretons	169204	169204	N	0	
FRD	Le RhÃ©ne et les cours d'eau cÃ©tiers mÃ©diterranÃ©ens	123491	123491	N	0	
FRI	Les cours d'eau de la Guadeloupe	2196	2196	N	0	
FRL	Les cours d'eau de la RÃ©union	8946	8946	N	0	
FRH	La Seine et les cours d'eau cÃ©tiers normands	96527	96527	N	0	

4. Requirements for data exchange

XML format

- XSD schemas available-Data Dictionary schemas
<http://dd.eionet.europa.eu/schemaset/WFD2016/view>

Access DB format

- Access DB template
- Guide mapping Access DB and Schema elements
- Access to XML converter tool

http://cdr.eionet.europa.eu/help/WFD/WFD_521_2016

4. Requirements for data exchange

File naming convention

- RBDSUCA_[Your ISO Country Code]_YYYY-MM-DD

Questions?



THANK YOU

Alberto Telletxea

atelletxea@bilbomatica.es

Enrique Soriano

jenriquesoriano@guadaltel.es

Mikel Santamaria

msantamaria@bilbomatica.es

Marisa Ruiz

marisarui@guadaltel.es

